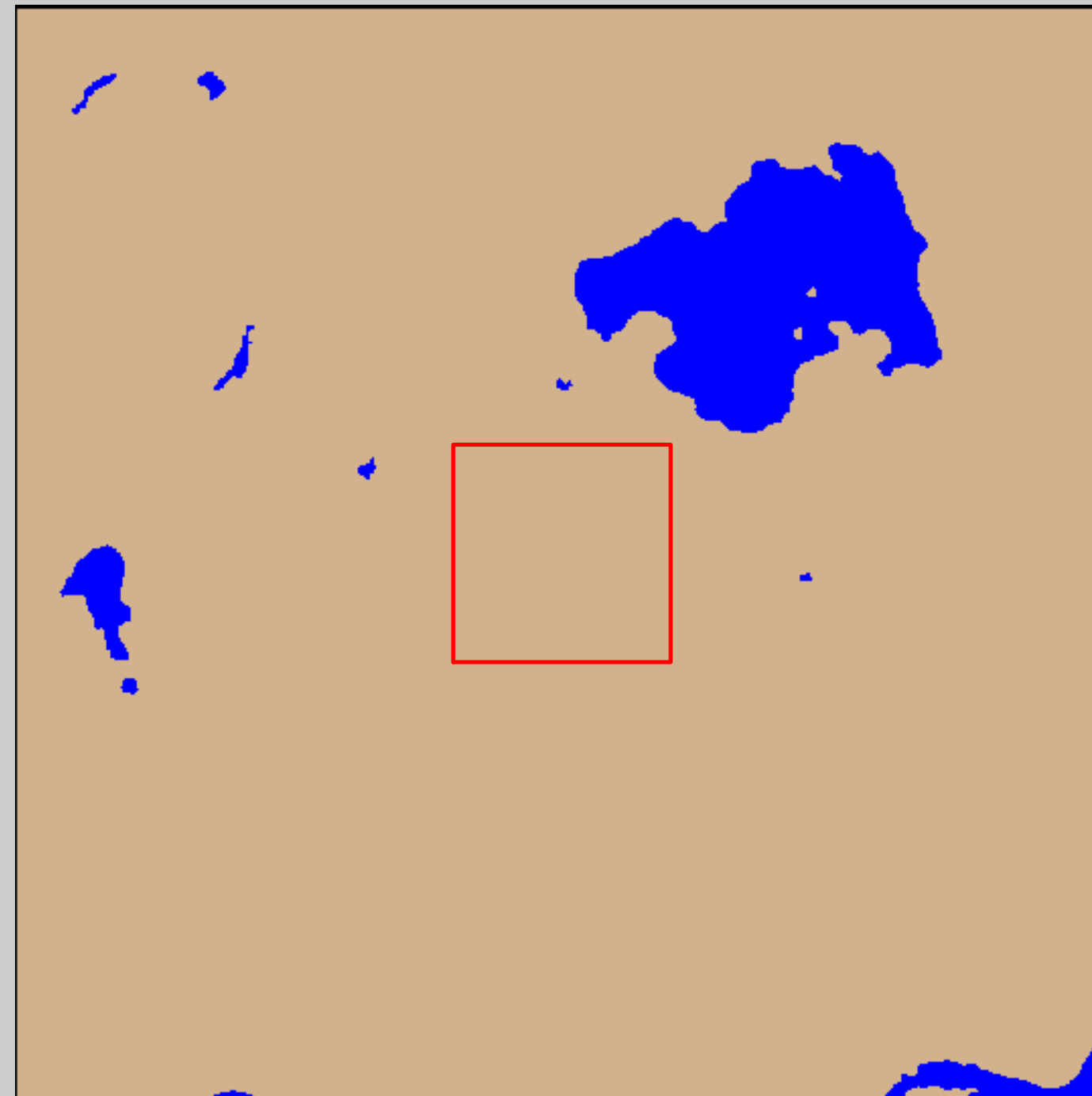
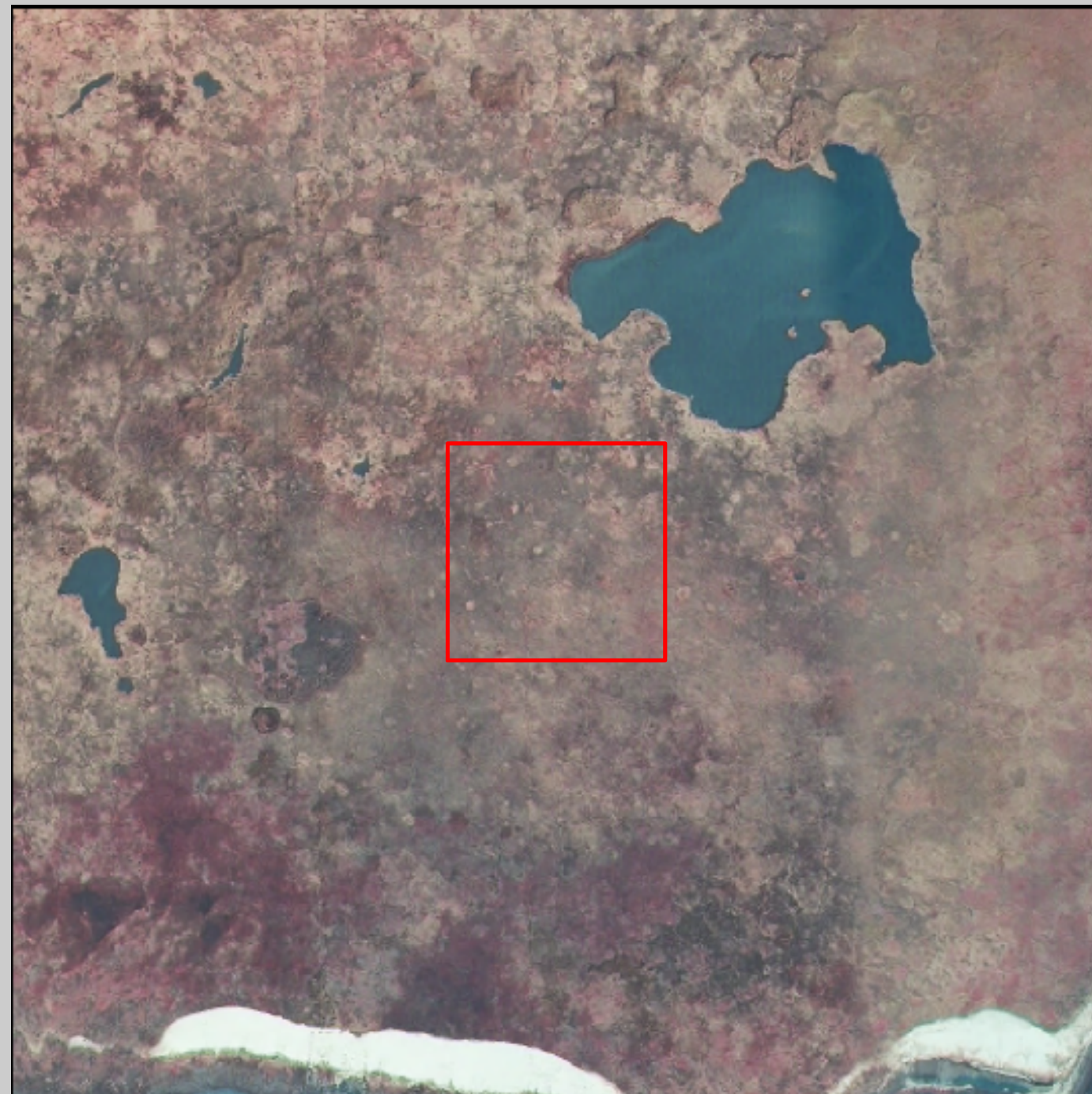


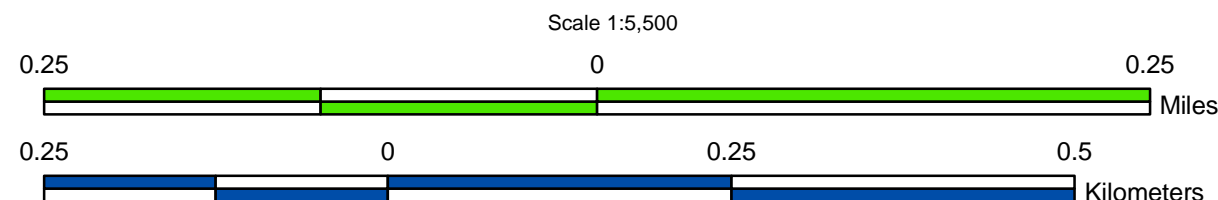
2005 Digital Image

2005 Land-Water Analysis



Prepared by:  
 U.S. Department of the Interior  
 U.S. Geological Survey  
 National Wetlands Research Center  
 Lafayette, Louisiana  
 Prepared for:  
 Louisiana Department of Natural Resources  
 Coastal Restoration Division  
 Lafayette Field Office

Data Source:  
 The land-water data were obtained from digital imagery (Z/I Imaging digital mapping camera) with 1-meter resolution, acquired October-November 2005. All areas characterized by emergent vegetation, upland, wetland forest, or scrub-shrub were classified as land, while open water, aquatic beds, and mudflats were classified as water.



**Data Collection Area (DCA)**  
 The DCA includes field samplings of water level, salinity, vegetation, surface elevation change, and soils.

**2005 Land-Water Acreage Results**

Class	Study Area
Land	233
Water	15
<b>Total</b>	<b>248</b>

