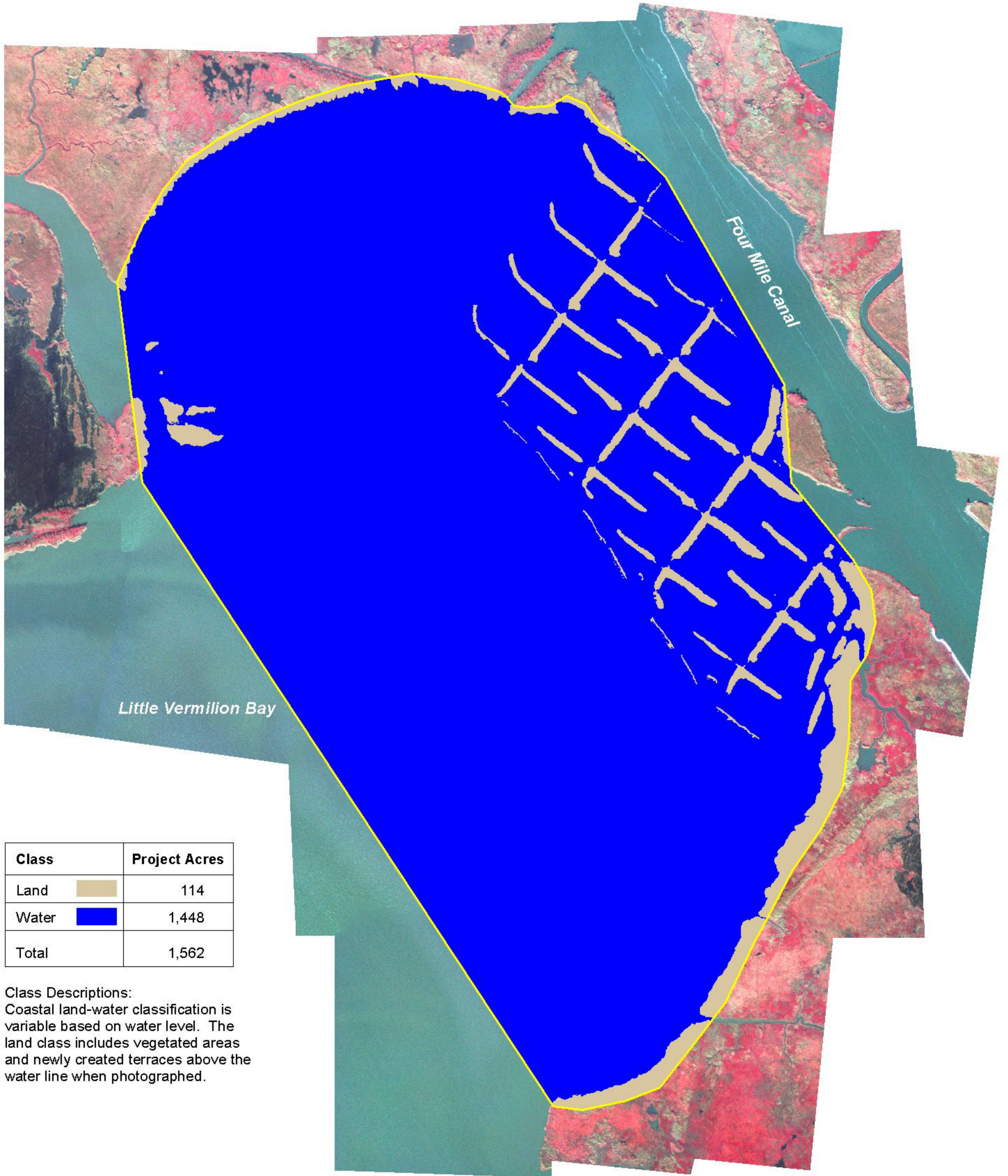




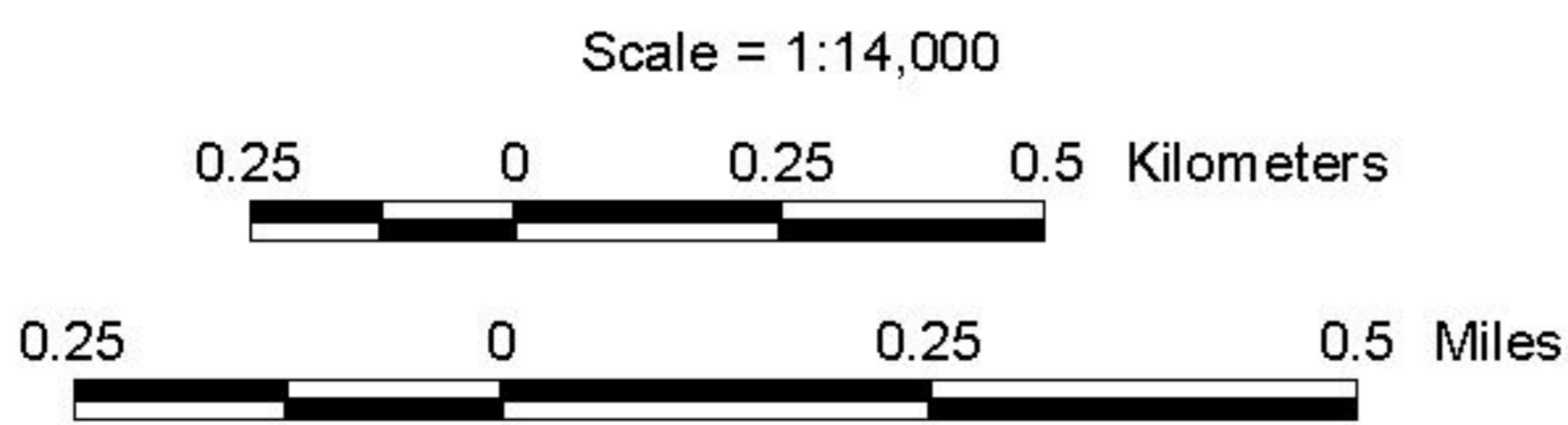
# Four Mile Canal Terracing and Sediment Trapping (TV-18)

Coastal Wetlands Planning, Protection, and Restoration Act  
2004 Land-Water Analysis



Class	Project Acres
Land 	114
Water 	1,448
Total	1,562

**Class Descriptions:**  
Coastal land-water classification is variable based on water level. The land class includes vegetated areas and newly created terraces above the water line when photographed.



Project Location



Vermilion Parish

Prepared by:  
U.S. Geological Survey  
National Wetlands Research Center  
Lafayette, Louisiana.

Data Source:  
Color infrared (CIR) digital photography  
was acquired December 20, 2004 at 8,500 ft.  
Ground sampling distance = 0.70m.

Map ID: USGS-NWRC 2005-16-0007

