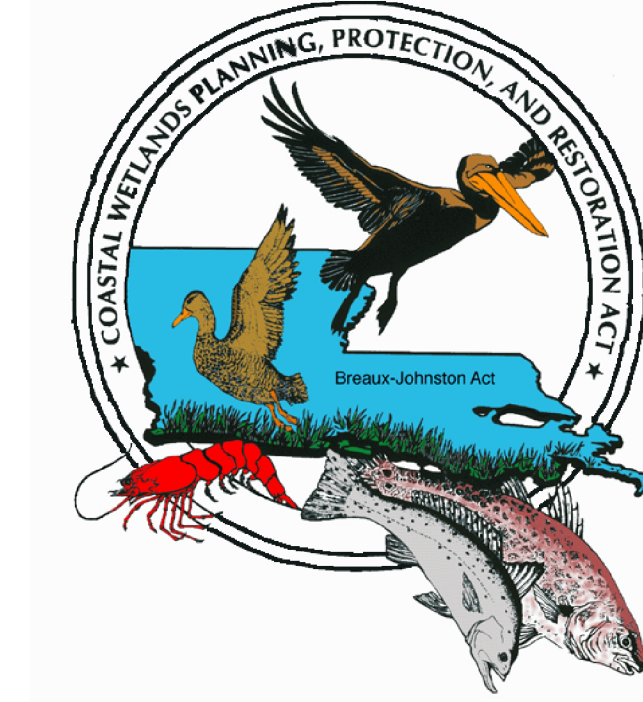


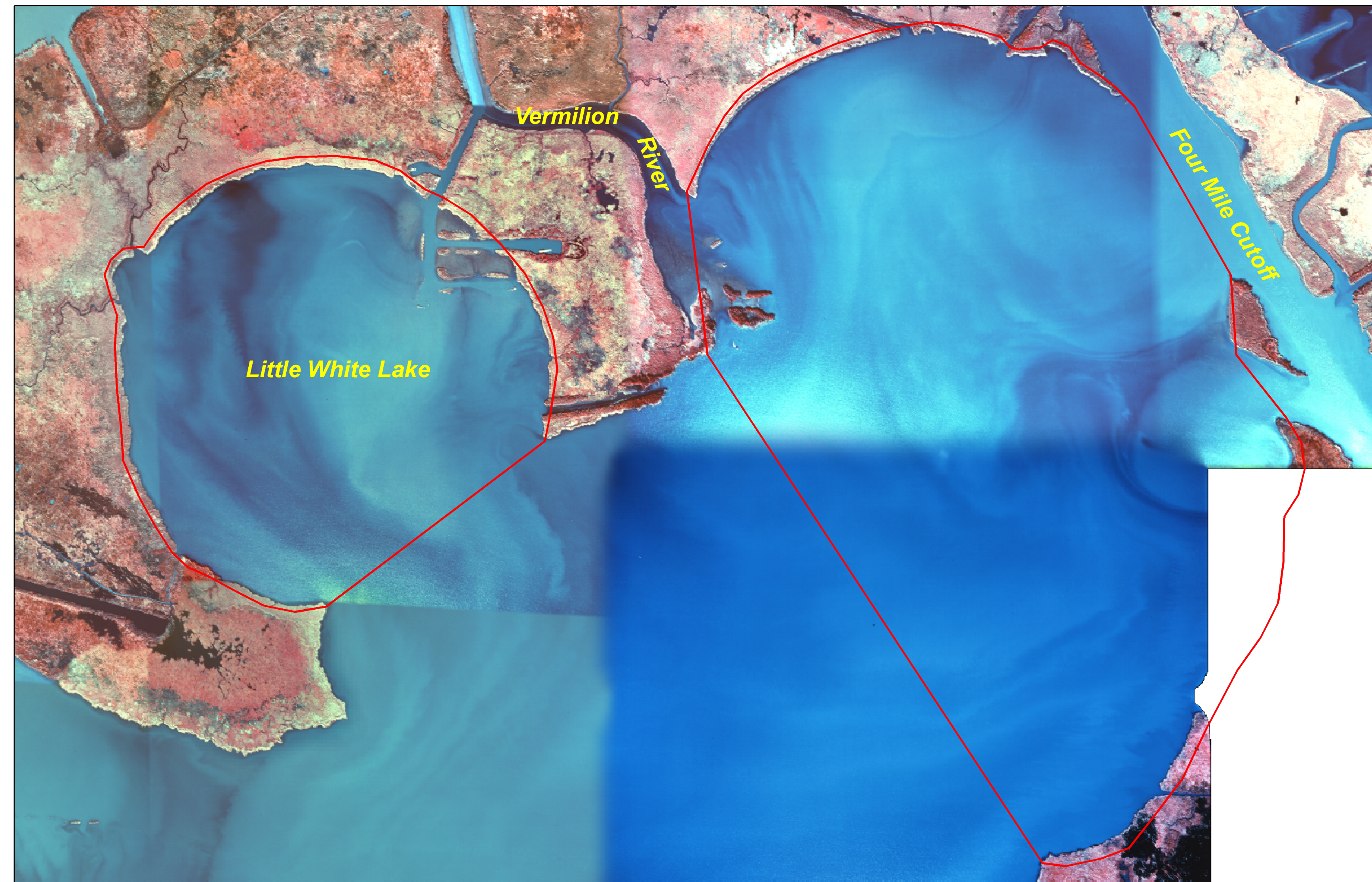
Four Mile Canal Terracing and Sediment Trapping (TV-18)

Coastal Wetlands Planning, Protection and Restoration Act

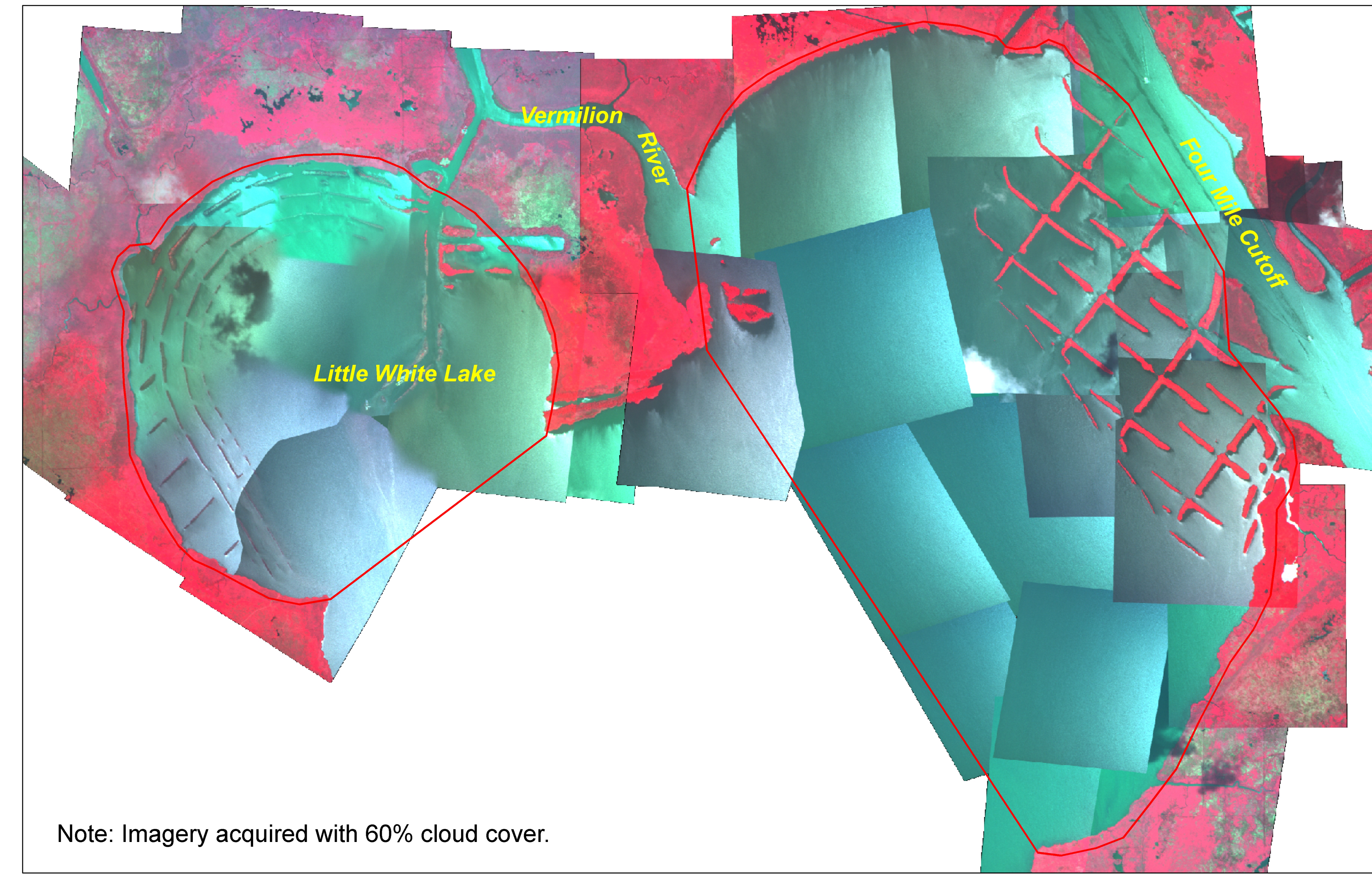
2000 and 2004 Land-Water-Mudflats Analysis



CIR Aerial Photography 2000



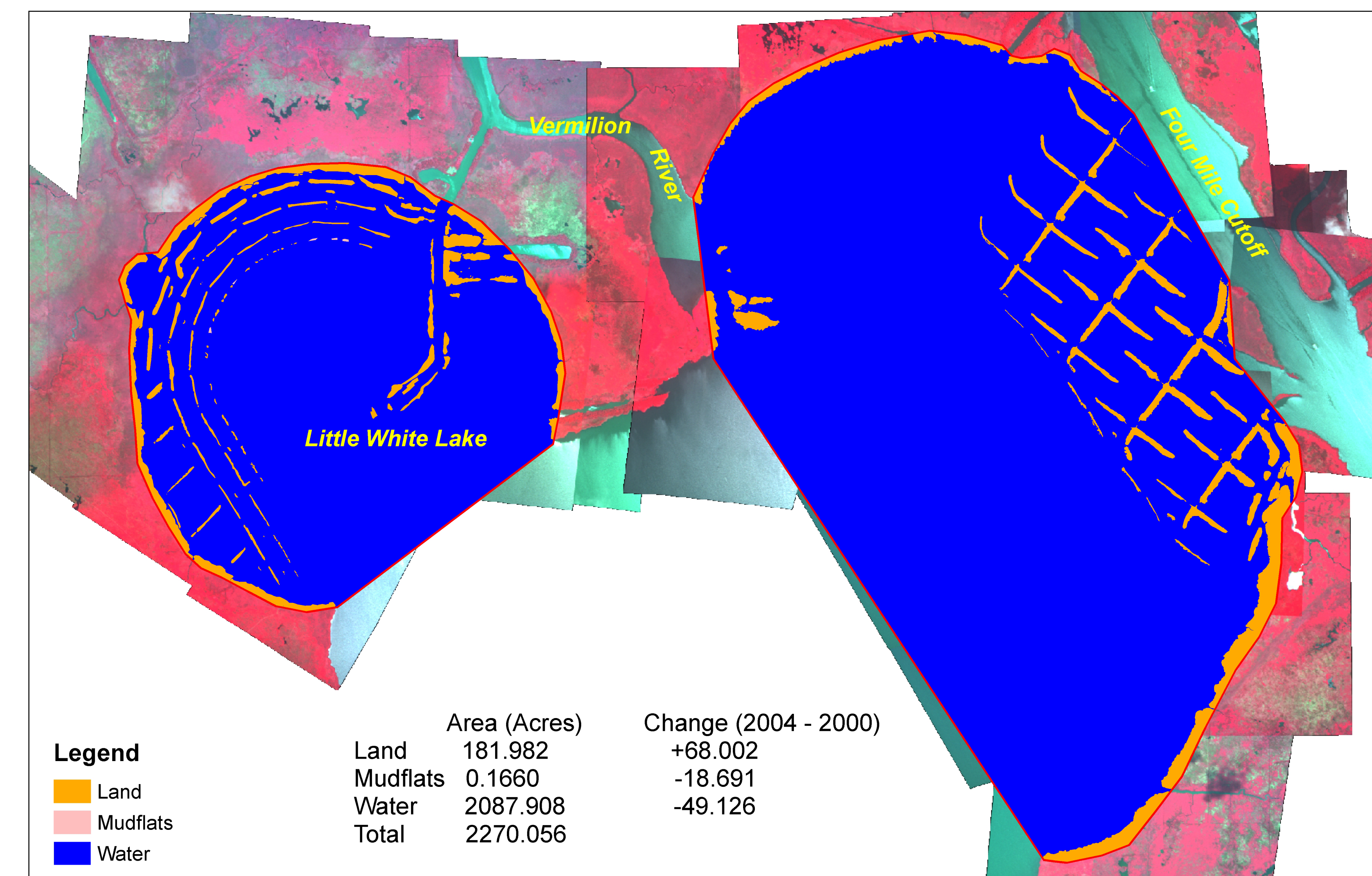
CIR Digital Camera Imagery 2004



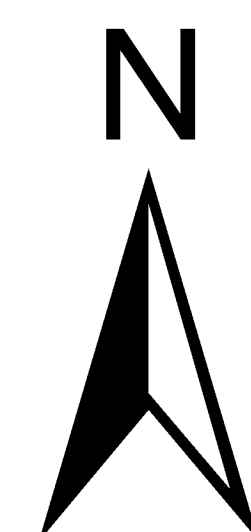
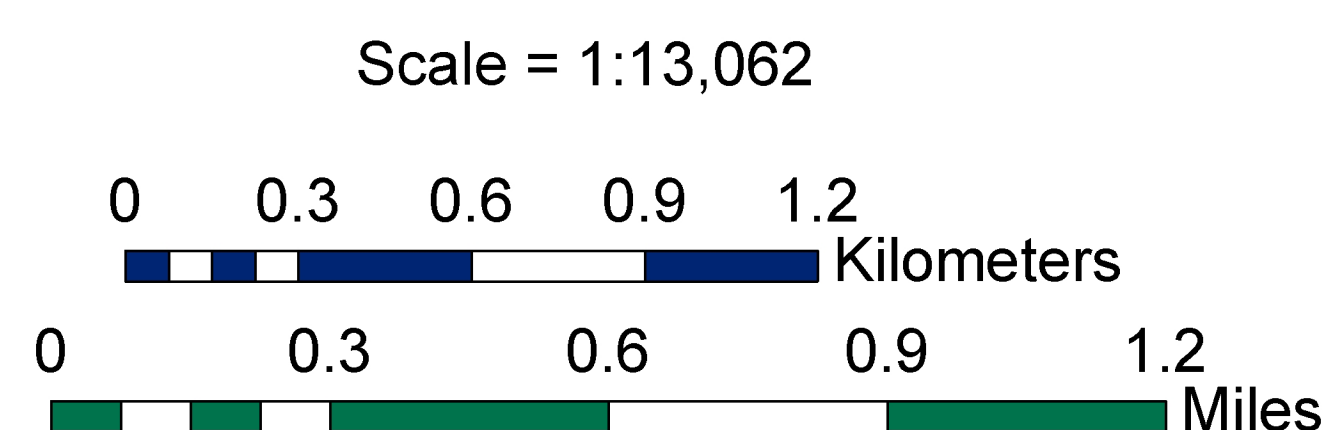
Land-Water Classified CIR Aerial Photography 2000



Land-Water Classified CIR Digital Camera Imagery 2004



Prepared By:
U.S. Geological Survey
National Wetlands Research Center
Lafayette, LA



Project Boundary

Description of Classes:
Coastal land/water classification is variable based on water level. Land is described as vegetated areas and newly created terraces above the water line at time of flight. Mudflats are described as tidally exposed non-vegetated lake bottom at time of flight. A mudflat classification has been added to assess the terraces' ability to create new land.



Project Location

Datasources:
Color Infrared (CIR) digital camera imagery was acquired by USGS equipment on July 13, 2004. GSD = 0.78m.
1:12000 scale CIR aerial photography was acquired on November 22, 2000.

Map ID: USGS - NWRC 2004-16-0033