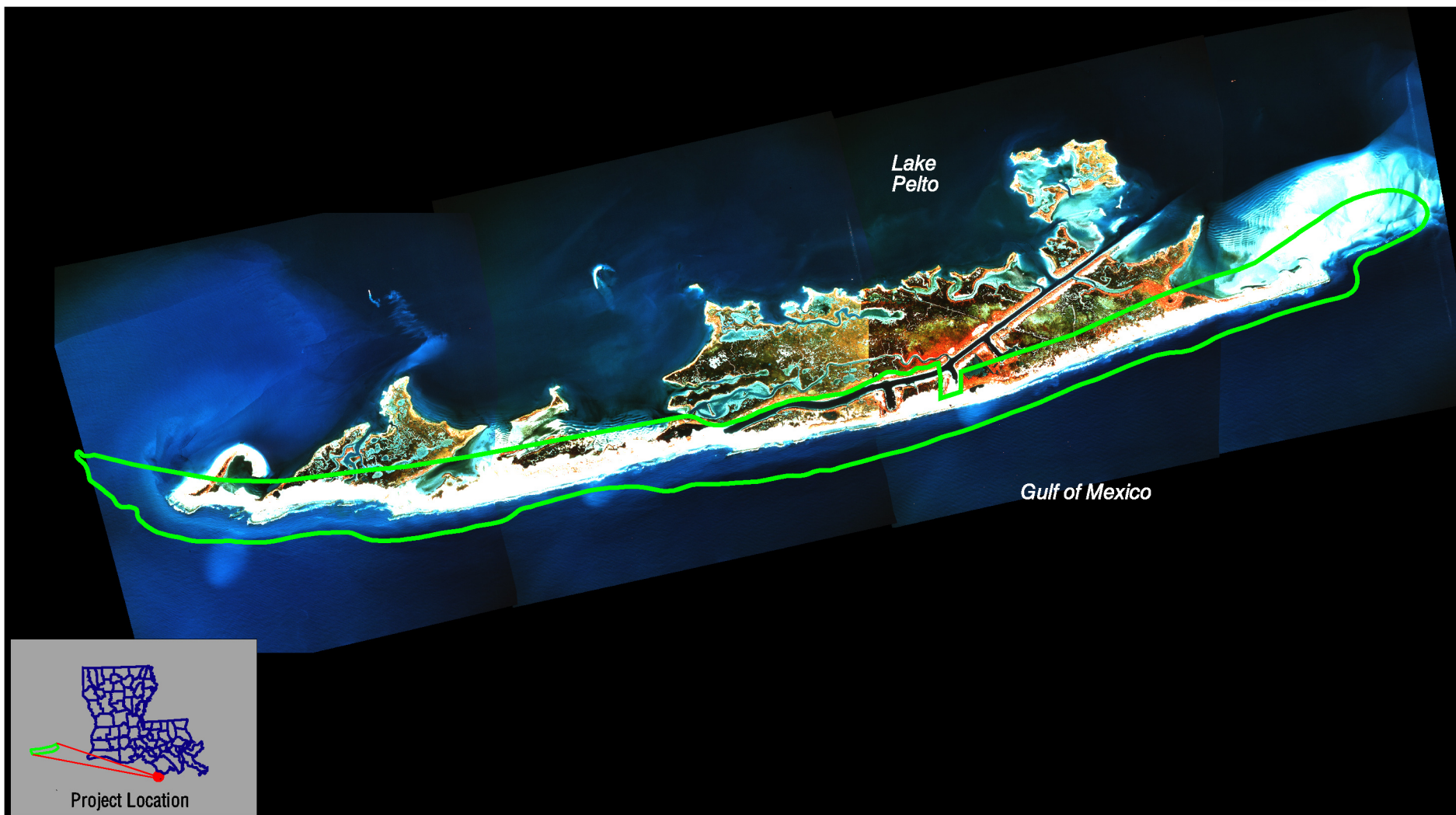




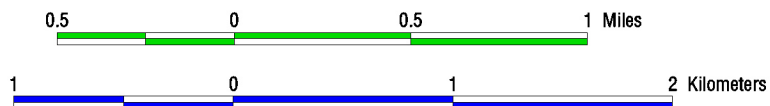
Eastern Isles Dernieres, Phase 1 (TE-24)

Coastal Wetlands Planning, Protection and Restoration Act

1997 Photomosaic



Prepared by:
U.S. Department of Interior
U.S. Geological Survey
National Wetlands Research Center
Lafayette, Louisiana
and
Louisiana Department of Natural Resources
Coastal Restoration Division
Thibodaux Field Office



Data Source: 1: 12,000 scale, color infrared aerial photography obtained December 16, 1997.

Federal Sponsor:
Environmental Protection Agency



Map ID: 00-02-092