



# Land Marks

www.LaCoast.gov

VOL. 3, ISSUE 4 - JULY/AUGUST 2016

## STATE OF THE COAST 2016

The State of the Coast conference took place June 1-3rd in New Orleans, LA. The State of the Coast conference is an interdisciplinary forum to exchange timely and relevant information on the dynamic conditions of Louisiana's coastal communities, environment, and economy and to apply that information to existing and future coastal restoration and protection efforts, policies, and decision-making. The conference is hosted by the Coalition to Restore Coastal Louisiana in partnership with the Coastal Protection and Restoration Authority and The Water Institute of the Gulf. CWPPRA is a sponsor of State of the Coast.

Kimberly Davis Reyher, Executive Director of the Coalition to Restore Coastal Louisiana, began the conference with a brief welcome and an introduction of the welcome address speaker, Johnny Bradberry, Executive Assistant to the Governor for Coastal Affairs and CPRA Chairman. The welcome was followed by a keynote address by Louisiana Governor John Bel Edwards. During his speech, Governor Edwards stated, "Coastal dollars are going to be used for coastal issues. We are ready for more, bigger, and better projects. I did not become governor to watch south Louisiana wash away." In addition, the governor declared, "coastal restoration is important in more ways than we can count if we want to remain the great State of Louisiana."



Governor Edwards above; Brad Inman right



Other plenary speakers included Michael Ellis, Executive Director of the Coastal Protection and Restoration Authority; Chip Groat, President and CEO of The Water Institute of the Gulf; Mayor Mitch Landrieu, City of New Orleans; and Dr. Denise Reed, Chief Scientist at The Water Institute of the Gulf. Brad Inman, Senior Project Manager for the U.S. Army Corps of Engineers and Chairman of the CWPPRA Planning and Evaluation Committee, presented *The Status and Future of the Coastal Wetlands Planning, Protection, and Restoration Act Program*. (continued on page 2)

## IN THIS ISSUE...

State of the Coast 2016 .....	2
Vermilion Parish Coastal Day .....	2-3
Featured Project: Barataria Bay Rim.....	3
WETshop.....	4

## DATES TO REMEMBER...

Aug 30	CPRA Board Meeting	Lake Charles, LA
Sept 9	BVPA Visionary Water Symposium	Lafayette, LA
Sept 14	CWPPRA Technical Committee Meeting	Baton Rouge, LA
Sept 21	CPRA Board Meeting	Baton Rouge, LA
Sept 24	National Hunting and Fishing Day	Woodworth, LA
Sept 28-29	Keep Louisiana Beautiful Conference	Baton Rouge, LA

(State of the Coast continued from page 1) The CWPPRA outreach exhibit at State of the Coast was an exciting stop for conference attendees. Through a partnership with the Barataria-Terrebonne National Estuary Program, participants were able to visit with a live alligator and nutria at the booth. Beignet the nutria demonstrated the tremendous quantity and speed at which nutria can eat, illustrating the destruction that they cause to coastal wetlands. Bootsie, an American Alligator, represented wetland wildlife that contributes to local economy and various industries. CWPPRA debuted a new poster



series campaign entitled "Protect Our Coast." Illustrated by CWPPRA Media Specialist Nikki Cavalier, the two posters depict the Louisiana iris and the Brown Pelican. The Protect Our Coast campaign theme was extended through a photo booth in the exhibit. Participants were able to select from a variety of props to hold or wear while posing in front of the campaign poster banners. Participants posted their photos on multiple social media platforms with the campaign hashtag #ProtectOurCoast.

## VERMILION PARISH COASTAL DAY

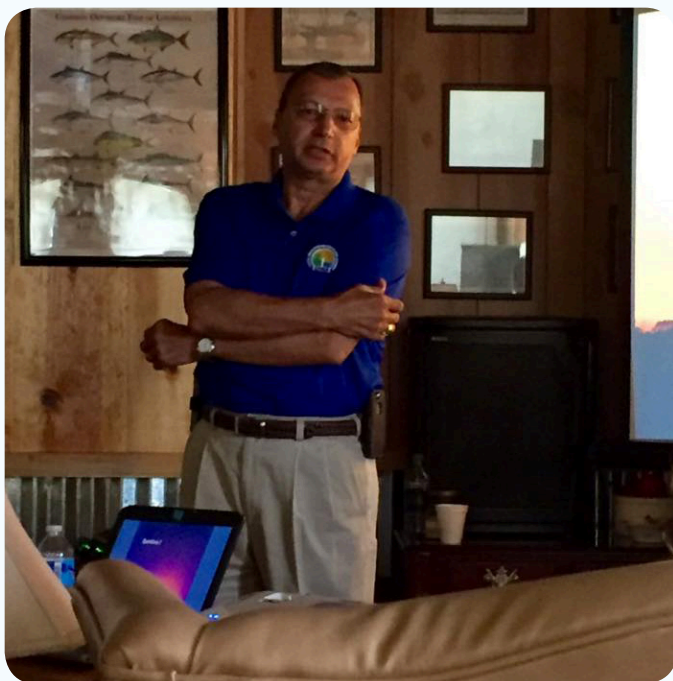
On Friday, June 10th, the Vermilion Parish Coastal Protection and Restoration Committee hosted the first Vermilion Parish Coastal Day in Intracoastal City, Louisiana. Joining the Vermilion Parish Coastal Committee was the Vermilion Parish Police Jury and leaders of Louisiana Coastal Protection and Restoration Authority (CPRA). The one-day event was dedicated to educating local landowners, government officials, and the general public on the success of previous coastal restoration projects as well as current coastal issues in hopes of uniting the community to support the progression of coastal efforts within Vermilion Parish.

Ronald Darby, President of Vermilion Parish Policy Jury, and Kevin Sagrera, Chairman of Vermilion Parish Coastal Committee, welcomed Johnny Bradberry, Executive Assistant to the Governor for Coastal Affairs and CPRA Chairman. Bradberry gave brief updates on current bills and legislation pertaining to coastal projects. Michael Ellis, Executive Director of CPRA, discussed the valuable natural resources available in Vermilion Parish. Ralph Libersat of the Vermilion Parish Coastal Committee presented an overview of Vermilion Parish coastal projects, explaining



Kevin Sagrera (above) and Johnny Bradberry (right) discuss restoration projects in Vermilion Parish





the critical need to protect what is there now, as opposed to having to recreate land years into the future. Libersat discussed the \$92 million of coastal project expenditures in Vermilion Parish to date: \$70 million from CWPPRA, \$18 million from Vermilion Parish, and \$3.4 million from surplus funding, giving a conservative total net benefit of 5180 acres. Libersat highlighted a few CWPPRA projects such as ME-31, TV-12, TV-18, TV-63, and TV-03; Libersat continued by expressing that Vermilion Bay is losing wetlands at a rate of 8-10 feet per day.

Following lunch was a site visit to two restoration project areas along Freshwater Bayou and Vermilion Bay. The first project site was Freshwater Bayou Marsh Creation (ME-31), located west of Freshwater Bayou and north of the Freshwater Bayou Locks; this project is in the Engineering and Design phase to create and/or nourish approximately 401 acres of marsh using dredged material. The second project site was Little Vermilion Bay Sediment Trapping (TV-12), located in the northwestern corner of Little Vermilion Bay at its intersection with the Gulf Intracoastal Waterway (GIWW); this project has been completed and was successful in shoreline protection and sediment trapping with terraces. ■

## FEATURED PROJECT: BARATARIA BAY RIM MARSH CREATION

BA-195 Barataria Bay Rim Marsh Creation is located in Region 2, Pontchartrain Basin, Jefferson and Plaquemines Parishes.

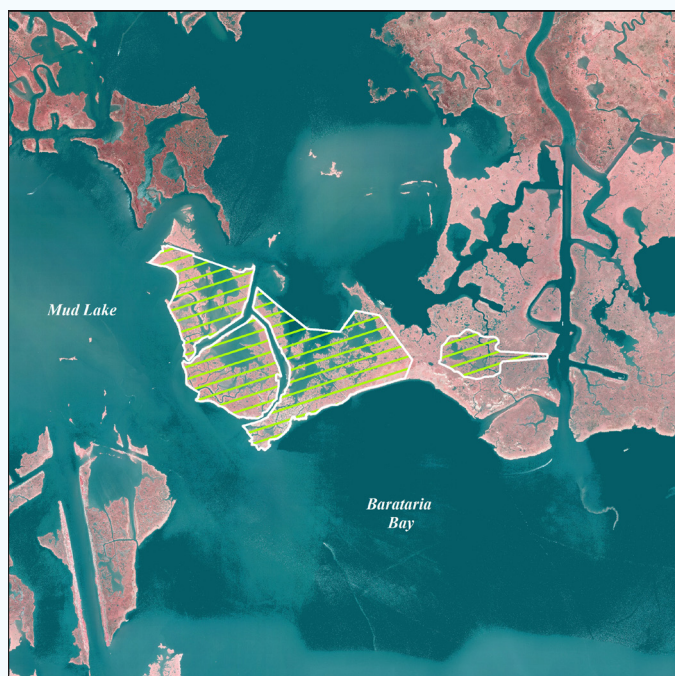
Historic wetland loss in the area occurs in the form of interior marsh loss and shoreline erosion along Barataria Bay. The interior loss is caused by subsidence, sediment deprivation, and construction of access and pipeline canals.



Marsh creation is targeted for open water areas of the project area.

The proposed project would create approximately 251 acres and nourish approximately 266 acres of marsh using sediment dredged from Barataria Bay. The majority of the dredged material would be fully contained. For creation of approximately 15 acres of marsh and nourishment of 34 acres in the eastern portion of the project, the dredged material would be semi-contained. Containment dikes will be degraded as necessary to reestablish hydrologic connectivity with adjacent wetlands. In case the area does not re-vegetate on its own, the maintenance cost estimate will include funds to plant 25% of the created marsh at Year 3.

This project is on Priority Project Lis (PPL) 25. It was approved for Phase I Engineering and Design in January 2016 and is funded by the Natural Resources Conservation Service and the Louisiana Coastal Protection and Restoration Authority.



Project map for BA-195 Barataria Bay Rim Marsh Creation. ■

## WETSHOP

On Tuesday, June 12th, the CWPPRA Public Outreach staff traveled to the Louisiana Department of Wildlife and Fisheries Marine Research Lab in Grand Isle, Louisiana to discuss Louisiana wetlands with teachers from around the state. The teachers participated in WETshop: a week-long, dynamic teacher workshop that allows teachers to work with educators and scientists to learn about Louisiana coastal wetlands, issues, and history. The focus of the summer workshop is to create wetland stewards of teachers in order for them to educate coworkers and students in their home parishes about coastal land loss. The workshop was sponsored by the Louisiana Department of Wildlife and Fishers and the Barataria-Terrebonne National Estuary Program. During WETshop, the teachers get a firsthand look at the importance of wetlands through visiting coastal ecosystems, water quality testing, marsh tours of coastal restoration sites, and the opportunity to learn about fisheries management, coastal botany and ornithology, and invasive species. The Coastal Wetlands Planning, Protection, and Restoration Act's Public Outreach staff



participated in WETshop as coastal wetland educators. CWPPRA provided each of the twenty teachers with packets containing numerous publications and teaching resources, a Southeast Louisiana Land Loss Map, and posters from CWPPRA's "Protect Our Coast" campaign. The public outreach staff also gave a presentation that highlighted causes of land loss, benefits of wetlands, CWPPRA's history and success of projects, and different way teachers can access and utilize wetland teaching materials. ■



## COASTAL WETLANDS PLANNING, PROTECTION AND RESTORATION ACT

RESTORING COASTAL LOUISIANA SINCE 1990

USGS WETLAND AND AQUATIC RESEARCH CENTER  
700 CAJUNDOME BOULEVARD LAFAYETTE, LOUISIANA 70506  
OFFICE PHONE: (337) 266-8623 OR (337) 266-8626

CONNECT WITH US

 [WWW.LACOAST.GOV](http://WWW.LACOAST.GOV)

 [FACEBOOK.COM/CWPPRA](https://FACEBOOK.COM/CWPPRA)

 [TWITTER.COM/CWPPRA](https://TWITTER.COM/CWPPRA)

 [CWPPRA.WORDPRESS.COM](http://CWPPRA.WORDPRESS.COM)