



# Land Marks

www.LaCoast.gov

VOL. 3, ISSUE 1 - JANUARY/FEBRUARY 2016

## LOUISIANA ENVIRONMENTAL EDUCATION STATE SYMPOSIUM

The Louisiana Environmental Education State Symposium was held February 19-20 in Baton Rouge. Hosted by the Louisiana Environmental Education Commission, Louisiana Department of Wildlife and Fisheries, and the Louisiana Environmental Education Association, the symposium brought together over 200 formal and informal educators from across the state. CWPPRA outreach staff participated as an exhibitor, connecting educators with resources focused on coastal wetland protection and restoration.

The theme of this year's symposium was "Exploring the Natural World" and featured a keynote address by famed Louisiana nature photographer C. C. Lockwood. Educators also had the opportunity to



learn about incorporating environmental education in the classroom through innovative, informative, and hands-on lesson plans and activities presented in four separate sessions spread out over the course of the second day. *(continued on page 2)*



Keynote speaker, C.C. Lockwood, speaks about his new book and the nature photographs he's taken in Louisiana.

### IN THIS ISSUE...

Environmental Education Symposium.....	2
CWPPRA PPL Updates .....	2
Featured Project: Oyster Lake .....	3
World Wetlands Day .....	4

### DATES TO REMEMBER...

Mar. 20-22	CNREP Conference	New Orleans, LA
Apr. 5	Technical Committee Meeting	New Orleans, LA
Apr. 16	Mandeville Watershed Festival	Mandeville, LA
Apr. 17	Louisiana Earth Day	Baton Rouge, LA
May 12	Task Force Meeting	Lafayette, LA

(Louisiana Environmental Education Symposium continued from page 1) "In the age of technology, our youth often take for granted the excitement of exploring the outdoors and the great entertainment found in our natural world," said outgoing LEEC



Above: Outgoing LEEC chairman, Cole Ruckstuhl, addresses the symposium attendees. Below: Many organizations set up exhibits to supply educators with free resources.



chairman Cole Ruckstuhl. "Our theme this year is meant to inspire our formal and informal educators to reconnect those they teach with nature. Spending time outside, you develop greater respect for and appreciation of the need to preserve the habitat of native species that dwell therein. We are certainly excited to see so much positive enthusiasm for this year's theme." ■

## CWPPRA PPL UPDATES

Due to 2016 Mississippi River high water events, the January Task Force meeting was canceled. By Task Force decision, it was resolved that an electronic vote would take place in lieu of the January Task Force meeting, and on January 20, 2016, Colonel Richard Hansen formally requested electronic votes. Among the topics voted on, PPL 25 was finalized. The Task Force approved the Technical Committee's recommendations for the following projects to be funded for Phase I Engineering and Design:

- PO-173 Fritchie Marsh Creation & Terracing
- CS-79 Oyster Lake Marsh Creation & Nourishment
- BA-193 Caminada Headlands Back Barrier Marsh Creation Increment II
- BA-194 East Leeville Marsh Creation & Nourishment
- BA-195 Barataria Bay Rim Marsh Creation

A new demonstration project, LA-280 Shoreline Protection, Preservation, and Restoration Panel, was also given funding. Additionally, the Task Force approved three projects to be funded for Phase II Construction. They are as follows:

- BA-34-2 Hydrologic Restoration and Planting in Lac Des Allemands Swamp
- TV-63 Cole's Bayou Marsh Restoration
- ME-18 Rockefeller Refuge Gulf Shoreline Stabilization

CWPPRA kicked off its 26th Priority Project List on January 26, 27, and 28. These regional planning team meetings, held in Lafayette, Gray, and Lacombe, gave the public the opportunity to nominate projects that restore and protect Louisiana's coastal wetlands. Anyone from the public, as well as the State and federal agencies can nominate a project



to be included on the PPL. A total of 61 basin projects, 1 coastwide project, and 8 demonstration projects were proposed. Parish representatives, five federal agencies, and the State participated in an electronic vote on February 23, where 17 basin projects, 5 demonstration projects, and 1 coastwide project were selected to move forward as PPL nominees. View the selected nominees and their proposed project fact sheets and PowerPoint presentations at [www.mvn.usace.army.mil/Missions/Environmental/CWPPRA/PriorityProjectLists.aspx](http://www.mvn.usace.army.mil/Missions/Environmental/CWPPRA/PriorityProjectLists.aspx). View the fact sheets for all existing CWPPRA projects as [www.lacoast.gov/new/Projects/List](http://www.lacoast.gov/new/Projects/List). ■

## FEATURED PROJECT: OYSTER LAKE MARSH CREATION AND NOURISHMENT

CS-79, Oyster Lake Marsh Creation and Nourishment, is located immediately south of Calcasieu Lake and west of the Calcasieu Ship Channel in Regional Planning Unit No. 4, Calcasieu-Sabine Basin, Cameron Parish, Louisiana.

The project would restore marsh to offset levels of historic and ongoing wetland loss. Based on USGS analysis of 1978 to 2000 data and Corps of Engineers data from 1974 to 1990, land loss ranges from 4.8 acres to 18.8 acres per year for the project area. Saltwater intrusion, drought stress, and hurricane-

induced wetland losses have resulted in interior marsh breakup and coalescence of Oyster Lake with interior water bodies.

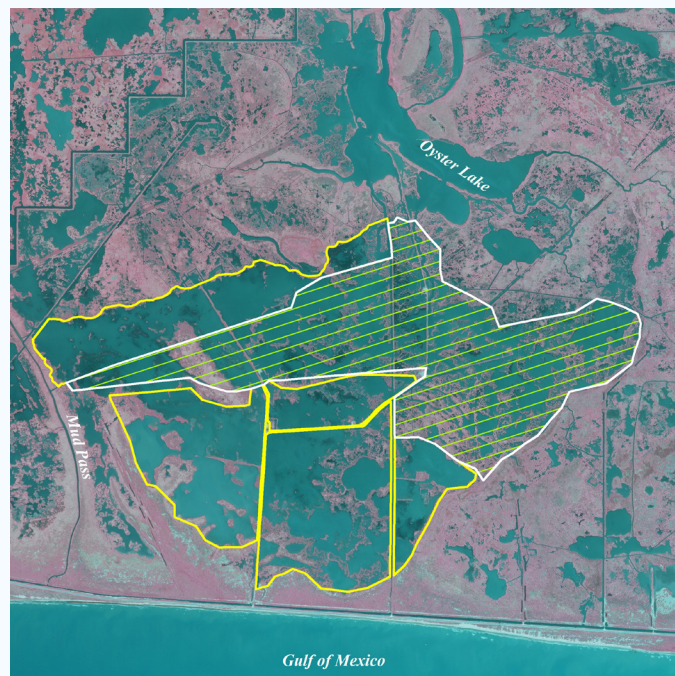
The primary goals of the project are to create approximately 475 acres of saline marsh in recently formed shallow open water and to nourish approximately 185 acres of saline marsh.

In order to achieve these goals, sediment would be mined from the offshore disposal area used for CS-59 and placed in multiple disposal areas to create approximately 660 acres of saline marsh. Disposal areas would be constructed between the CS-59 marsh creation areas and terrace field depicted on the concept map (red polygon). Disposal would be semi-confined and up to half of the created elevations would be planted with smooth cordgrass plugs. Possible expansion of the marsh creation area is shown on the concept map as yellow polygons. Although marsh creation via dedicated dredging of sediment would be the primary technique, opportunities may exist to include some terracing where warranted, but that is not included in the benefit/cost estimates at this time.

This project is on Priority Project List 25. It was approved for Phase I Engineering and Design in January 2016 and is funded by the National Marine Fisheries Service and the Louisiana Coastal Protection and Restoration Authority. ■



Example of the shallow open water receiving areas within the Oyster Lake project.



Project map for CS-79 Oyster Lake Marsh Creation and Nourishment.

## WORLD WETLANDS DAY

On Tuesday, February 2, The Coastal Wetlands Planning, Protection, and Restoration Act's Public Outreach staff attended the 2016 World Wetland's Day Celebration at the South Louisiana Wetlands Discovery Center in Houma. In attendance were nearly 200 local students from St. Matthew's Episcopal School, St. Francis de Sales Catholic School, Honduras Elementary, and the Home School Association. The CWPPRA Outreach staff exhibited two interactive games entitled Where the Wild Things Are and Wetland Animal Tracks, where students were able to learn about wetland habitats and the animals living in them. Where the Wild Things Are consists of each student receiving a number of different wetland bean bag animals which must be tossed to its correct habitat: swamp, marsh, barrier island, and ocean. Similarly, the Wetland Animal Tracks game displays a photo of the tracks of different wetland animals, prompting students to guess what animal the tracks belong to based on photos and natural history clues. The CWPPRA staff also handed out wetland hero coloring sheets, as well as brochures which highlight CWPPRA's efforts to restore Louisiana's wetlands. ■



## COASTAL WETLANDS PLANNING, PROTECTION AND RESTORATION ACT

RESTORING COASTAL LOUISIANA SINCE 1990

USGS WETLAND AND AQUATIC RESEARCH CENTER  
700 CAJUNDOME BOULEVARD LAFAYETTE, LOUISIANA 70506  
OFFICE PHONE: (337) 266-8623 OR (337) 266-8626

CONNECT WITH US

 [WWW.LACOAST.GOV](http://WWW.LACOAST.GOV)

 [FACEBOOK.COM/CWPPRA](https://FACEBOOK.COM/CWPPRA)

 [TWITTER.COM/CWPPRA](https://TWITTER.COM/CWPPRA)

 [CWPPRA.WORDPRESS.COM](http://CWPPRA.WORDPRESS.COM)