

LA Wetland Education Coalition

Wetland News, #26, April 21, 2005

<http://www.lacoast.gov/education/lawec/>



1. Saving Wetlands
2. Governor Blanco Lobbies Congressional Leaders for Coastal Restoration Funds
3. Upcoming Wetland Events
4. Entergy Corporation's Environmental Stewardship Grant Program
5. Estuary LIVE! Online!
6. Terra Server USA
7. Upcoming Wetland Events
8. LAWEC-L LISTSERVE INFORMATION

1. Saving Wetlands

Emily Sohn, *Science News for Kids*

There's water, and there's land. Somewhere in the middle, there are wetlands. Not totally flooded by water, but not completely dry either, these in-between places rank among the richest ecosystems on Earth. Marshes, mangroves, bogs, swamps, bayous, prairie potholes, and other wetlands often have more plant and animal life than any lakes, rivers, grasslands, forests, or hillsides nearby. To read the rest of this article, visit <http://www.sciencenewsforkids.org/articles/20050406/Feature1.asp>

2. Governor Blanco Lobbies Congressional Leaders for Coastal Restoration Funds

Last month, Governor Kathleen Babineaux Blanco took her pleas for money to help restore America's WETLAND to the chairmen of two of the key Congressional committees that will decide the level of coastal restoration funding provided by the Federal Government. 'We're working from every angle we can think up,' Blanco said during a break in her schedule at the National Governors Association meeting in Washington, DC.

Governor Blanco and members of Louisiana's congressional delegation met with Senate Environment and Public Works Committee Chairman Sen. James Inhofe and House Energy and Commerce Committee Chairman Rep. Joe Barton to discuss two primary strategies that the state will employ to secure Federal monies. With Senator Inhofe, she asked for \$1.9 billion to fund a coastal restoration plan with the Corps of Engineers, while the meeting with Representative Barton pushed for Louisiana and other coastal

states to get much more federal oil and gas royalty money from offshore drilling. Governor Blanco plans to use additional royalty money to support coastal restoration projects. Both meetings ended with the Chairmen expressing their intentions to do what they can to ensure the success of these strategies.

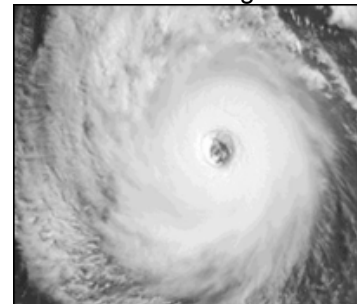
More information about Governor Blanco's lobbying efforts, see the Associated Press article at <http://www.americaswetland.com/article.cfm?id=206&cateid=3&pageid=3&cid=18>.

3. Hurricane Prediction Gets a Hand

Scientific American.com
Science News, April 21, 2005

Image: NOAA

During the 2004 hurricane season, six major storms formed in the North Atlantic basin and four of them made landfall in the U.S. to devastating effect. Now researchers writing in the journal *Nature* report that they have developed a new method for forecasting hurricane activity, which could help hurricane-prone states better prepare.



Mark A. Saunders and Adam S. Lea of University College London based their new system on measurements of wind taken at heights between 750 and 7,500 meters above sea level. By analyzing wind patterns recorded in July from six regions in North America and over the oceans, the model predicts the amount of wind energy in hurricanes expected to hit land between August

and October. When the team used the new model for retrospective forecasts of hurricane seasons between 1950 and 2003, it correctly classified the extent of damage in 74 percent of the cases. Under "real-time" conditions in 2004, the model performed well, the scientists say, and insurers and others could have reduced their losses by acting on the forecast.

Because of the costly nature of hurricanes--the average annual damage tops \$5 billion--any steps toward alleviating their destruction would be welcome. "For over two decades scientists have been attempting--with limited success--to deliver seasonal predictions of hurricane activity reaching the coast of the U.S.," Saunders says. "This study is the first to offer forecast prediction which is high enough to be practically useful." The researchers plan to release their predictions for the 2005 season on August 4. --Sarah Graham

4. Entergy Corporation's Environmental Stewardship Grant Program

Entergy Corporation sixth annual Environmental Stewardship Grant program. The program provides support to community-based projects that protect, enhance or preserve the environment. Grants are available up to \$25,000, but typically range between \$5,000 and \$10,000. Visit <http://www.entergy.com/Corp/she/grant.asp>. Deadline: May 31, 2005

5. Estuary LIVE! Online!

May 3-5, 2005 ~ Online

Take a live, interactive virtual field trip to the Rachel Carson Site of the North Carolina National Estuarine Research Reserve, four uninhabited islands and salt marshes located off Beaufort, N.C.

8. LAWEC-L LISTSERVE INFORMATION

- **Description of this listserv:** A listserv serving educators interested in LA wetlands.
- **To send a message of your own to the listserv:** email LAWEC-L@LISTSERV.LSU.EDU and type your message into the body of the email. The message will be distributed to ALL PARTICIPANTS subscribing to the listserv. As a participant, you are welcome to send messages to educators subscribing to the LA Wetland Education Coalition listserv. We ask that participants focus their emails on educational opportunities and materials *directly related to wetland education*.
- **To UNSUBSCRIBE from this listserv:** email LAWEC-L@LISTSERV.LSU.EDU and enclose the following single line in the body of the email
unsubscribe LAWEC-L
- **To SUBSCRIBE to this listserv:** email LISTSERV@LISTSERV.LSU.EDU, with only the following line listed in the body of the email:
subscribe lawec-l YourFirstName YourLastName
For example: subscribe lawec-l John Doe
NOTE: You should not put anything in the subject line and should remove any automatic signatures from the email, otherwise the signup process will not work. You will get a return message indicating that you have been subscribed to the listserv along with information on other listserv operations you can perform (such as unsubscribe, etc.). If you have trouble, email Dr. Pam Blanchard at <pamb@lsu.edu>.

Please do not reply to the entire list unless you want everyone to read your message!

with a trained naturalist as your guide via a live Internet connection. Lesson plans and images are available on-line. Visit <http://www.estuarylive.org/>.

6. Terra Server USA

Sponsored by United States Geological Survey (USGS), the Microsoft Terra Server allows you to view virtually any place in the United States. Visit famous and historic sites or check out your own neighborhood or home. Some images are clear enough to see your car in the driveway and dog in the backyard! Type in an address and Terra Server will give you several photo and date options. Visit <http://terraserver.microsoft.com/>.

7. Upcoming Wetland Events

- **"A Place Called America's WETLAND" Resource Center Launch Tour (April 26-28th)** - With stops in New Orleans, Baton Rouge and Lafayette, this tour will introduce the newly installed interactive kiosks and the many other materials to help visitors and Louisianans alike enjoy, explore, experience and learn about "A Place Called America's WETLAND."
- **May is American Wetlands Month** -- This nationwide event is coordinated by America's WETLAND Cooperating Organization, the Izaak Walton League of America and gives Americans everywhere the chance to celebrate the uniqueness, beauty and importance of the nation's wetlands. Check out this website for more information on how people across the United States are celebrating. Visit <http://www.iwla.org/sos/awm/#awm>
- **"Coastal Crisis" Debuts (June 11th)** -- The campaign's hour-long documentary will premiere on the Discovery Science Channel. Don't miss it!