

Coastwide Reference Monitoring System - *Wetlands*

Status Report for the
CWPPRA Task Force
October 18, 2006

CRMS-Wetlands: Authorizations

| | |
|--|---------------------|
| ▶ August 14, 2003: (2003-2006) | \$12,397,506 |
| ▪ (PPL 1-8 and new funding) | |
| ▶ January 28, 2004: (2007) | \$3,101,357 |
| ▶ October 13, 2004: (2008) | \$532,000 |
| ▶ October 26, 2005: (2009) | \$1,036,109 |
| ▶ Total Authorized To Date: | \$17,066,972 |
| ▶ <u>October 18, 2006: (2010)</u> | <u>\$3,185,809</u> |
| ▶ Total Anticipated Authorization | \$20,252,781 |
| ▶ Expenses through FY05: | \$1,568,109 |
| ▶ <u>Expenses in FY06:</u> | <u>\$3,185,809</u> |
| ▶ Total Expenses To Date | \$4,753,918 |
| ▶ Anticipated Balance (pending approval): | \$15,498,863 |

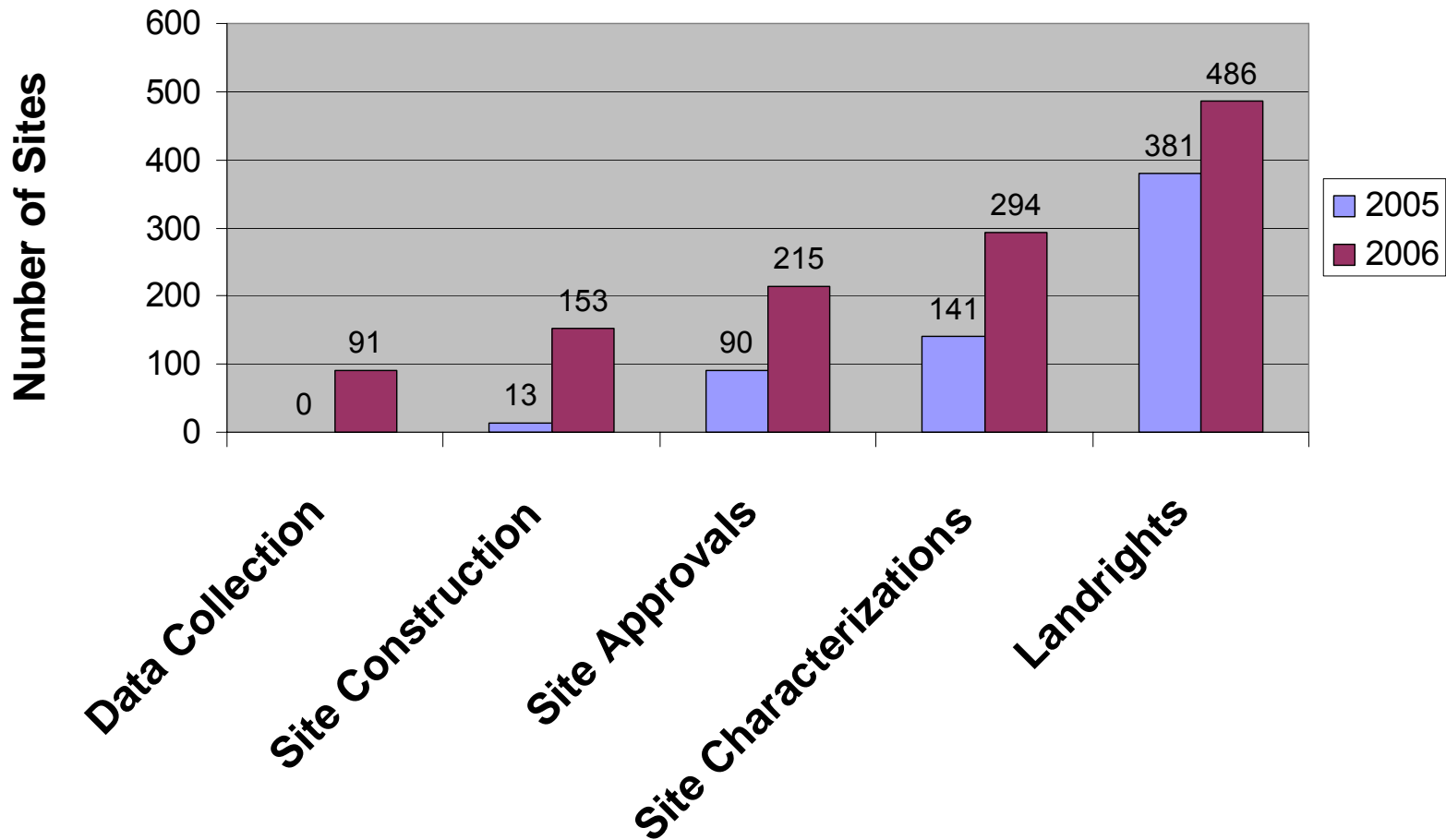
02 27 2004

CRMS-*Wetlands*: Milestones

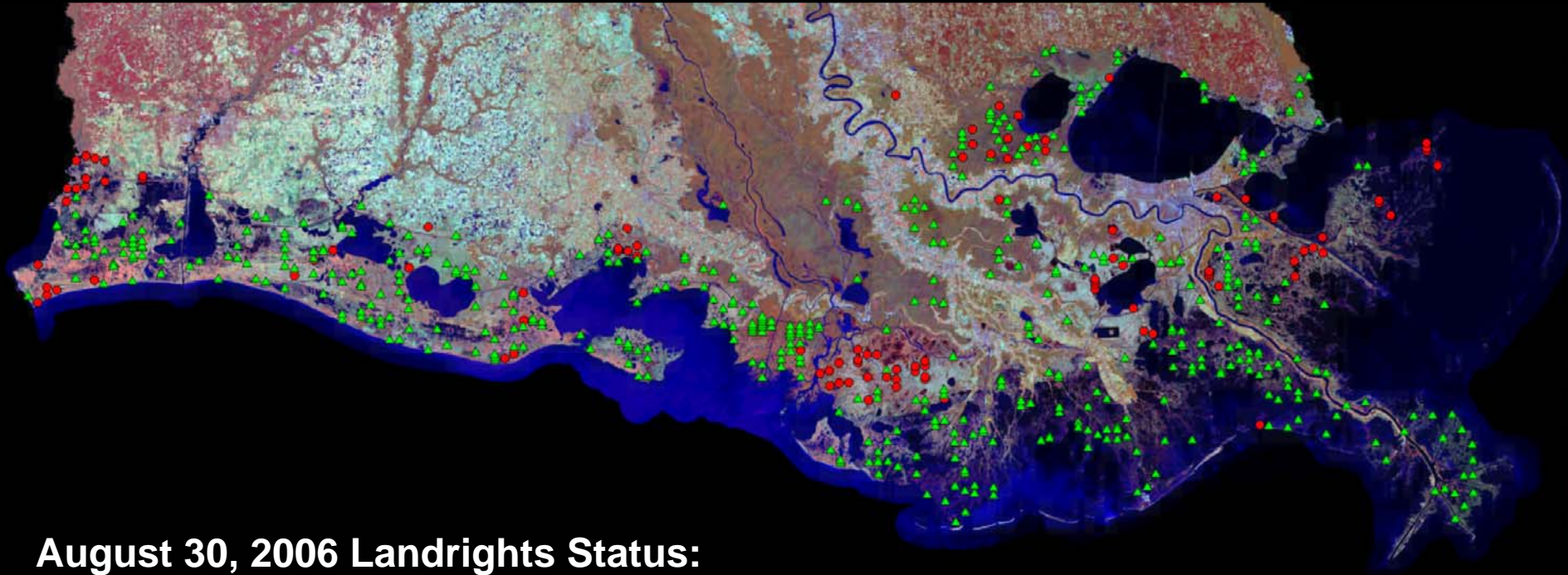
- Landrights
 - 486 of 612 sites secured to date
- Cost Share Agreement
 - DNR-USGS finalized June 8, 2004
- Contracting
 - Data Collection - Coastal Estuary Services – finalized February 1, 2005
 - Equipment – Hach Environmental – Equipment to support 300 sites received August 05 – July 06
- Methodologies-Training-QA/QC
 - DNR, USGS and CES staff – phased training in March and August 2005 on SOP's and QA/QC
 - DNR, USGS and CWPPRA agency personnel – monitoring data and information access through SONRIS and LaCoast

CRMS-*Wetlands*: Milestones

CRMS Implementation Status



Coastwide Reference Monitoring System - *Wetlands*



August 30, 2006 Landrights Status:

▲ SECURED: 486

● PENDING: 126

| | Secured | Pending | Total |
|-----------------|---------|---------|-------|
| Annual Stations | 155 | 32 | 187 |
| Year 1 Stations | 111 | 32 | 143 |
| Year 2 Stations | 111 | 27 | 138 |
| Year 3 Stations | 109 | 35 | 144 |
| Total | 486 | 126 | 612 |

LANDRIGHTS

- Site Characterization Report 294 completed to date

[illegible]

CRMS-*Wetlands* : Implementation



- Construction of sites began in July 2005
 - Approximately 153 sites constructed

CRMS-*Wetlands* : Implementation

Data Collection (as of August 30, 2006):

- 60 benchmarks incorporated into LDNR vertical control network
- 179 CRMS sites – post-hurricane assess
- 91 CRMS sites all parameters; 215 CRMS sites vegetation sampling
- Coastwide aerial photography and satellite imagery collected Fall 2005 available on lacoast.gov
- Land:water analysis complete on 55 CRMS sites using aerial photography and coastwide using satellite imagery (in peer review)

A person wearing a light blue shirt is kneeling in a wetland area, using a red-handled tool to work in the mud. Tall grasses are visible in the foreground and background. The image is slightly blurred, giving it a candid, field-work feel.

CRMS-*Wetlands*: Projections through March 2007

- **Meet with Monitoring Workgroup in Fall 2006**
- **Install remaining benchmarks**
- **Complete construction of all year 1 sites**
- **Data collection on all year 1 sites**
- **Web enable vegetation and sediment data and develop on-the-fly graphics**
- **Assemble analysis team to support basin-level assessments**

CWPPRA Monitoring: Budget Request

Out-year funding (2010)

Project-specific (PPL 9-11): The following PPL 9-11 cash-flow projects will continue to have project-specific monitoring activities and will require addition out-year funding.

| | |
|------------------|---|
| ● \$17,863 | CS-30 GIWW Bank Stabilization (Perry Ridge – TX) |
| ● \$77,808 | TE-37 New Cut Dune/Marsh Restoration |
| ● \$3,215 | TV-18 Four-Mile Cut/Little Vermilion Bay HR |
| ● \$22,621 | BS-11 Delta Management at Fort St. Phillip |
| \$121,507 | TOTAL |

Coastwide Reference Monitoring System – Wetlands

CRMS-Wetlands has been funded by previous Task Force authorizations through FY09. The following request is for out-year funding for FY-10.

- **\$3,185,809 CRMS-Wetlands (replacement of expenditures from FY06)**