

# CWPPRA How To

Everything You Need To Know To Submit A Project To Be Considered For CWPPRA Funding

## 1. Local Support



- Gaining local support is a key first step in the development of successful projects!
- We suggest you reach out to local groups prior to the Regional Planning Team Meeting (RPT) for assistance.

## 2. Consistency with Coastal Master Plan

- Work with representatives of the Louisiana Coastal Protection and Restoration Authority prior to the RPT meeting to develop projects that are consistent with the State's 2017 Master Plan.
- Please read the Master Plan on [coastal.la.gov](http://coastal.la.gov) to assist in the development of projects that are consistent.



If you have any questions or would like guidance on the development of projects that are consistent, please contact Kent Bollfrass with CPRA ([kent.bollfrass@la.gov](mailto:kent.bollfrass@la.gov)).

## 3. Regional Planning Team (RPT) Meetings



- Projects can only be submitted at RPT Meetings in January or February of each year. RPT Meetings are based upon the hydrologic basin where the project is located.
  - Region 1: Pontchartrain Basin
  - Region 2: Barataria and Breton Sound Basins
  - Region 3: Teche/Vermilion, Atchafalaya, and Terrebonne Basins
  - Region 4: Calcasieu/Sabine and Mermentau Basins

- The RPT Lead will open up nominations for each basin individually. Projects should be proposed in the basin in which the project is located. If a project spans multiple basins, the project should be proposed in the basin in which most of the benefits are received. Larger projects spanning multiple basins should be broken into multiple projects to be considered individually in the basins in which they occur.
- Due to the COVID-19 social distancing recommendations, the CWPPRA Regional Planning Team will hold virtual meetings for PPL-31. For detailed information about how to virtually attend the meeting click [here](#).

## 4. Coastwide and Demonstration Projects



Legitimate coastwide project applications will be accepted separate from the 8 basins at any of the RPT meetings.



Demonstration Projects contain new technology that can be transferred to other areas of the coastal zone.



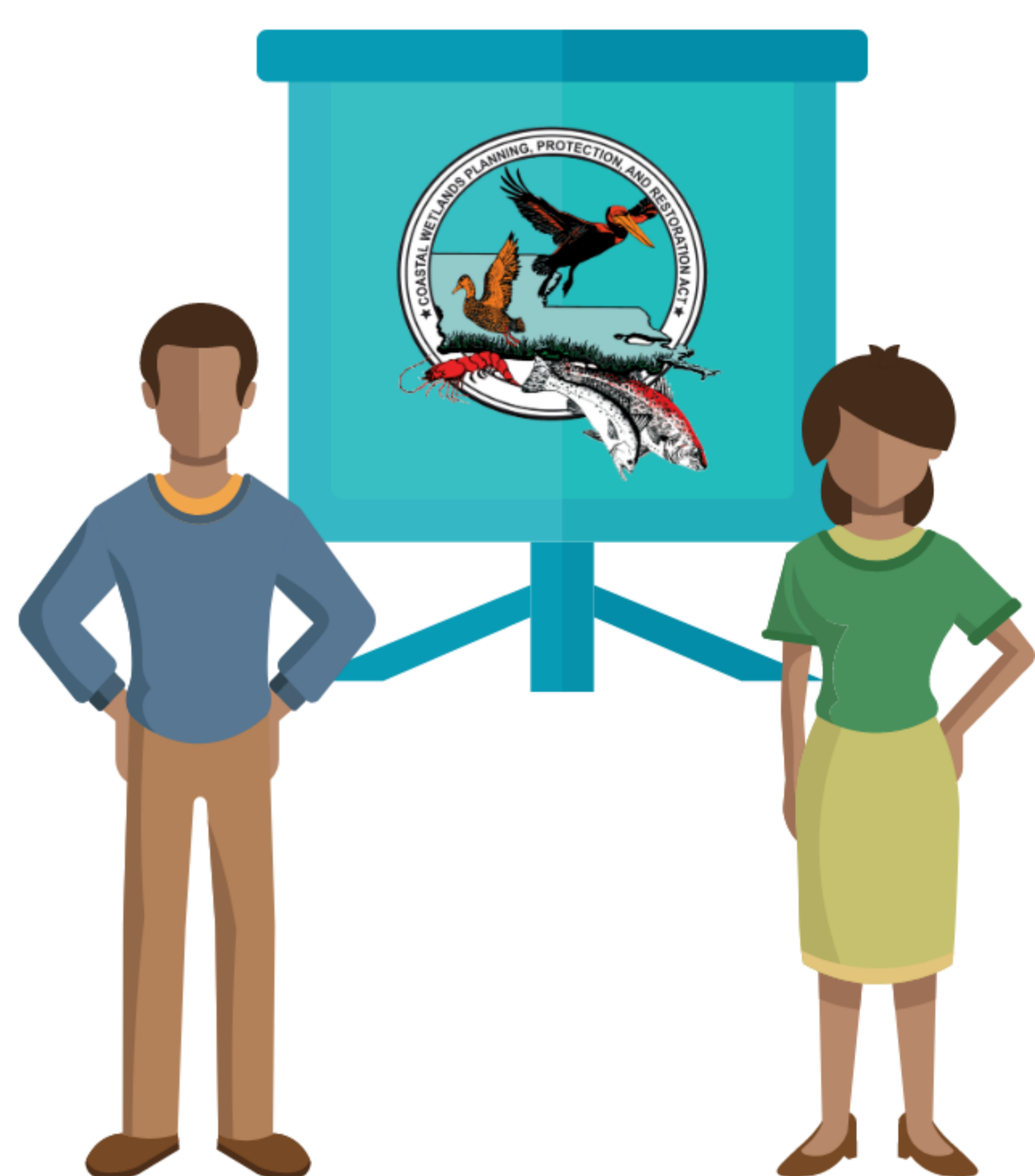
Nominations for Coastwide and Demonstration projects will be held after the basin nominations at the end of each RPT Meeting



Coastwide and Demonstration Projects can be presented at any or all RPT meeting but will only be nominated once. It is recommended that presentations for coastwide and demonstration projects include how the project meets the guidelines for the category in which the project is being proposed. The Demonstration Project guidelines are found in Appendix E and the Coastwide Project Guidelines are found in Appendix F in the CWPPRA Standard Operating Procedures.

## 5. RPT Meeting Presentation Requirements

- Proposals must be less than five minutes.
- All powerpoint presentations five slides max.
- Projected construction costs, including contingency, must be presented in \$5M range (\$0-5M, \$5-10M, \$10-15M, etc).
- It is recommended that a project and vicinity map be included in your proposal.
- Project Nominations Forms and/or Project Factsheets must be submitted before 8am the day of the meeting to Alice Kerl ([alice.p.kerl@usace.army.mil](mailto:alice.p.kerl@usace.army.mil)). Though it is recommended that you submit project nomination by January 25th to secure a spot on the agenda.
- Presentations must be emailed to [Alice.P.Kerl@usace.army.mil](mailto:Alice.P.Kerl@usace.army.mil) no later than 8:00 a.m. the morning of the RPT meeting.



## 6. Stay Connected!

Sign up for the CWPPRA Newsflash on [LACoast.gov](http://LACoast.gov) for RPT, Technical Committee, and Task Force Meeting dates and more information on the complete PPL process.



[www.LACoast.gov](http://www.LACoast.gov)



Have any questions about the process?

Contact CWPPRA Community Outreach and Media Specialist Kacie Wright at [kmwright@usgs.gov](mailto:kmwright@usgs.gov).