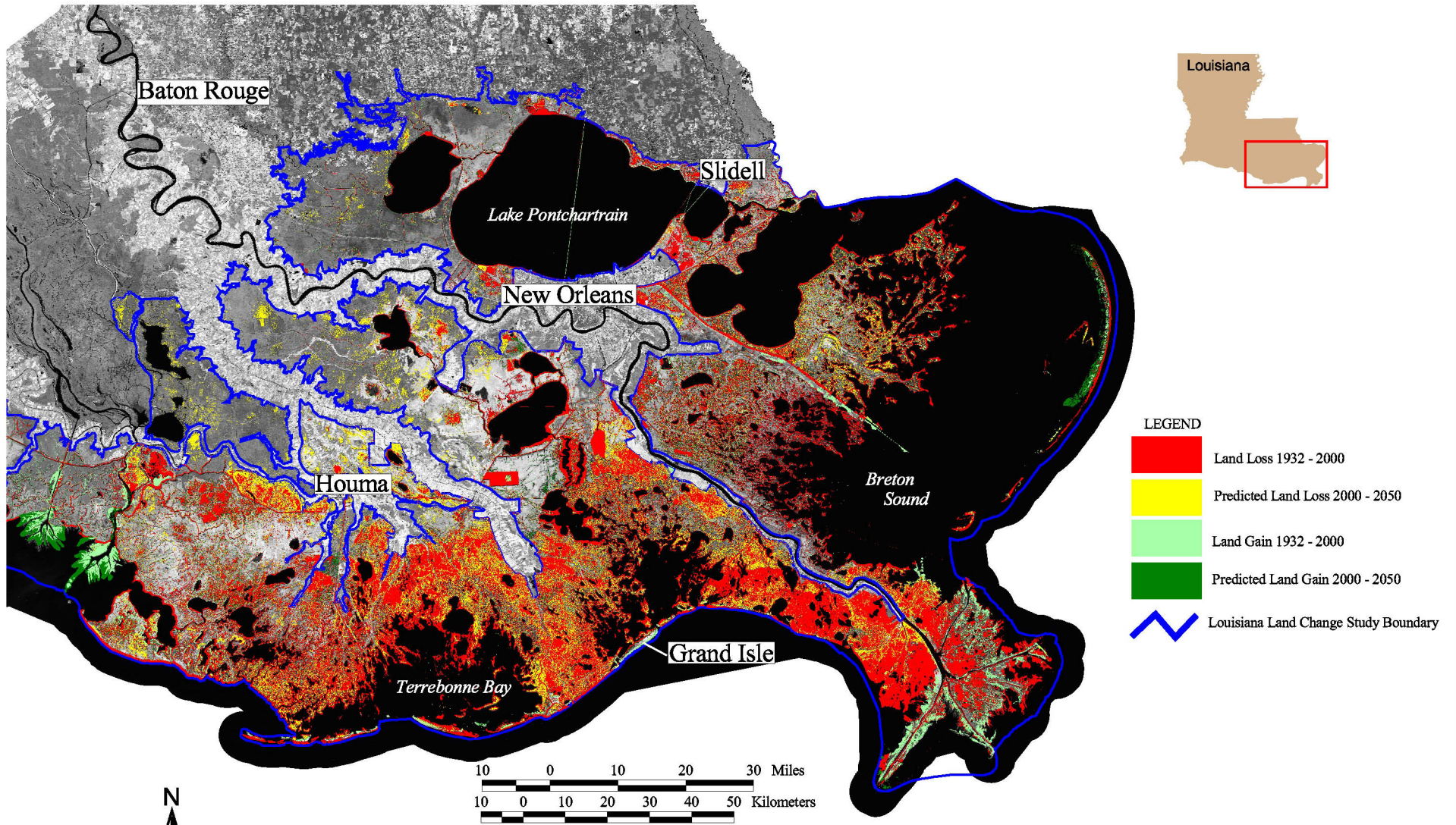


# 100+ Years of Land Change for Southeast Coastal Louisiana



### SUMMARY

Coastal Louisiana has lost an average of 34 square miles of land, primarily marsh, per year for the last 50 years. From 1932 to 2000, coastal Louisiana has lost 1,900 square miles of land, roughly an area the size of the state of Delaware. If nothing is done to stop this land loss, Louisiana could potentially lose approximately 700 square miles of land, or about equal to the size of the greater Washington D.C.-Baltimore area, in the next 50 years. Further, Louisiana accounted for an estimated 90 percent of the coastal marsh loss in the lower 48 states during the 1990s. The area shown on this map represents over 75 percent of the total land loss for coastal Louisiana.

Backdrop is 2000 TM panchromatic band.

