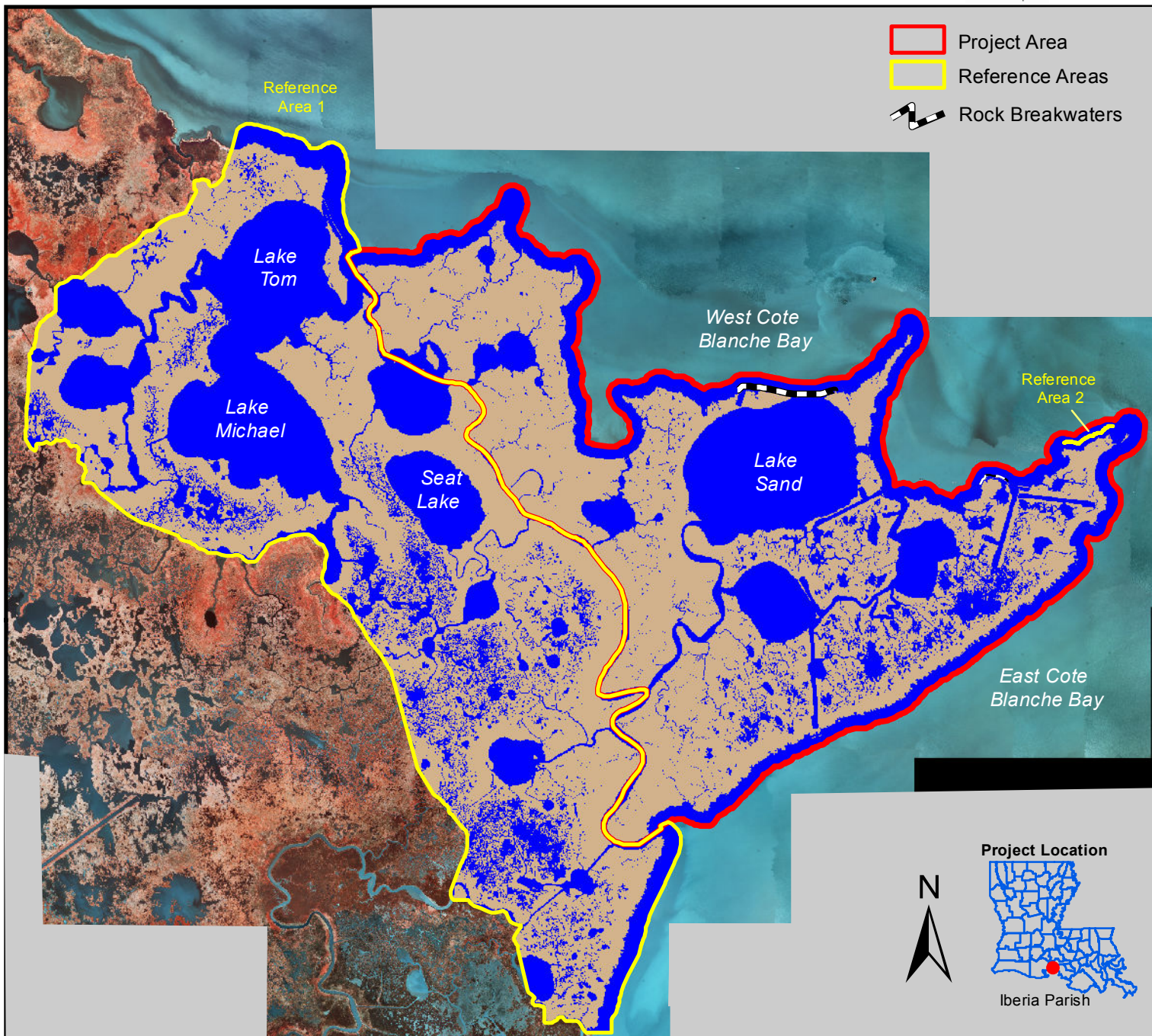


# Marsh Island Hydrologic Restoration (TV-14)

Coastal Wetlands Planning, Protection and Restoration Act  
2009 Land-Water Classification



- Project Area
- Reference Areas
- Rock Breakwaters

### 2009 Land-Water Acreages

Class	Project Area	Reference Area 1	Reference Area 2 *
Land	4,116	4,597	0
Water	3,194	3,577	0
<b>Total</b>	<b>7,310</b>	<b>8,174</b>	<b>0</b>

\* Reference Area 2 was created for comparison of shoreline positions only. It contains an insignificant amount of area and is, therefore, not included in the land-water classification.

#### Data Information:

The land-water data were derived from 1:12,000 scale color infrared aerial photography acquired December 20, 2009. All areas characterized by emergent vegetation, wetland forest, upland, or scrub-shrub were classified as land, while open water, aquatic beds, and mudflats were classified as water. The Reference Area represents a control as an effective means for evaluating a project's success.

**Prepared by:**  
U.S. Department of the Interior  
U.S. Geological Survey  
National Wetlands Research Center  
Lafayette, Louisiana  
and  
Coastal Protection and Restoration Authority of Louisiana  
Lafayette Field Office

Scale 1:70,000



**Federal Sponsor:**  
U.S. Army Corps of Engineers

