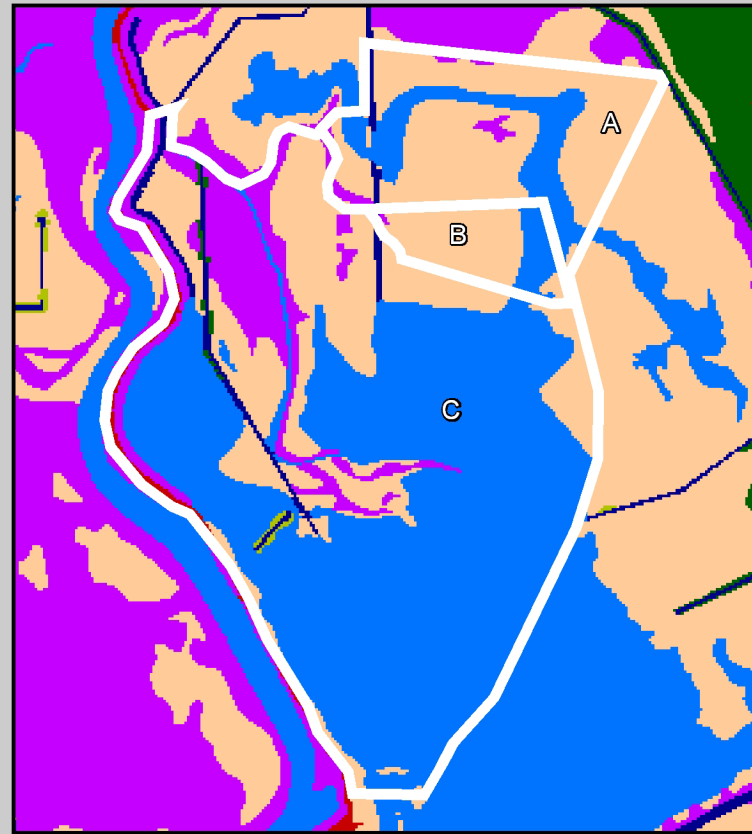


Habitat Analysis of Avoca Island Diversion and Land Building (TE-49) Areas A, B, and C

1956 Habitat

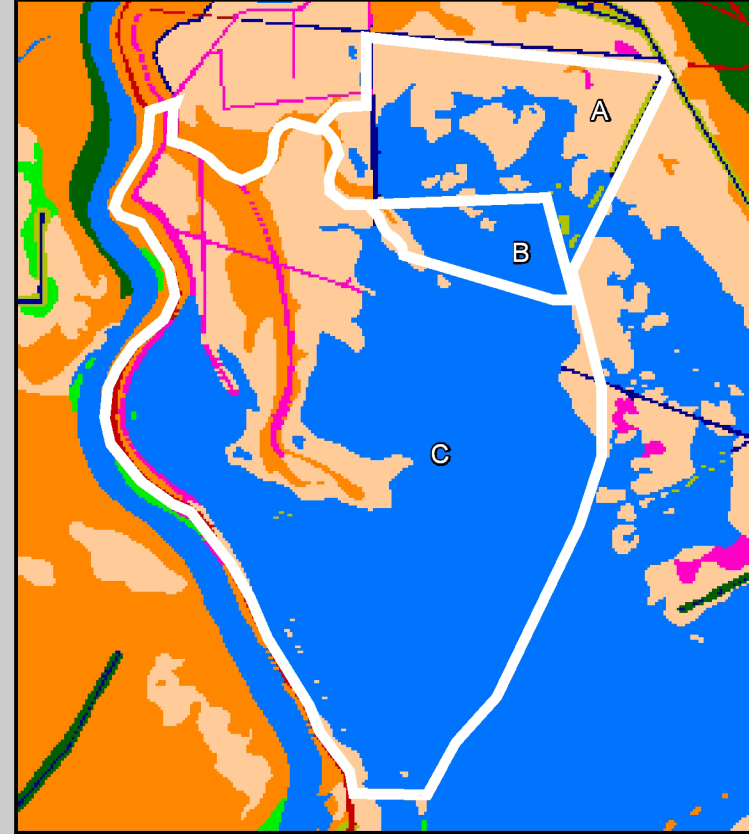


Area A		
Class		Acres
Water (Natural)		229
Water (Artificial)		20
Fresh Marsh		696
Swamp		44
Total Acres		989

Area B		
Class		Acres
Water (Natural)		65
Water (Artificial)		2
Fresh Marsh		212
Swamp		2
Total Acres		281

Area C		
Class		Acres
Water (Natural)		2693
Water (Artificial)		86
Fresh Marsh		1004
Forest		14
Swamp		470
Shrub/Scrub (Spoil)		8
Developed		67
Total Acres		4342

1978 Habitat

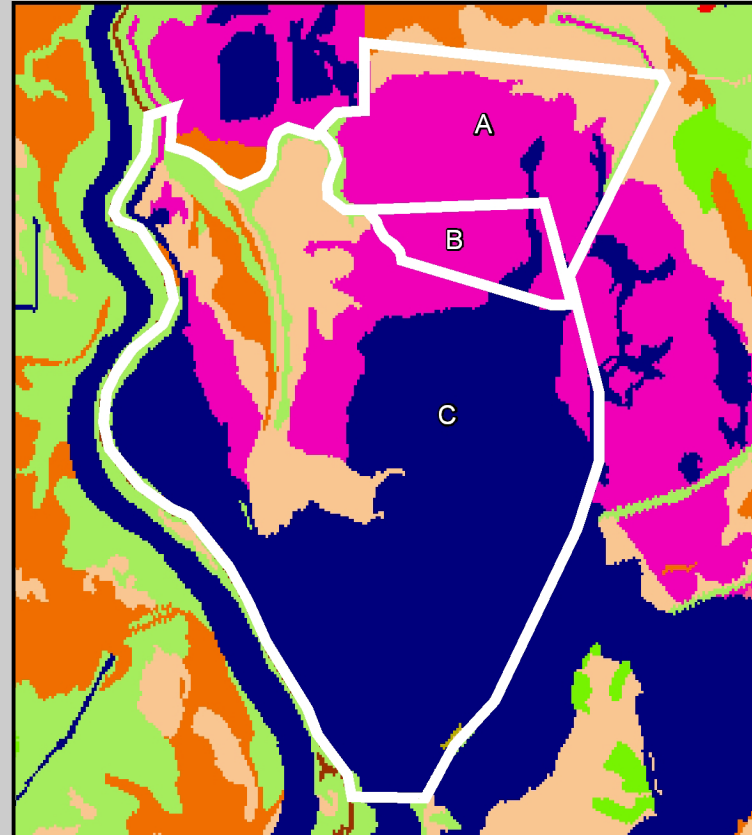


Area A		
Class		Acres
Water (Natural)		363
Water (Artificial)		31
Aquatic Vegetation		3
Fresh Marsh		544
Swamp		24
Shrub/Scrub (Spoil)		24
Total Acres		989

Area B		
Class		Acres
Water (Natural)		247
Water (Artificial)		1
Fresh Marsh		31
Swamp		2
Total Acres		281

Area C		
Class		Acres
Water (Natural)		2966
Water (Artificial)		7
Aquatic Vegetation		137
Developed		57
Fresh Marsh		802
Swamp		371
Shrub/Scrub		1
Shrub/Scrub (Spoil)		1
Total Acres		4342

1988 Habitat

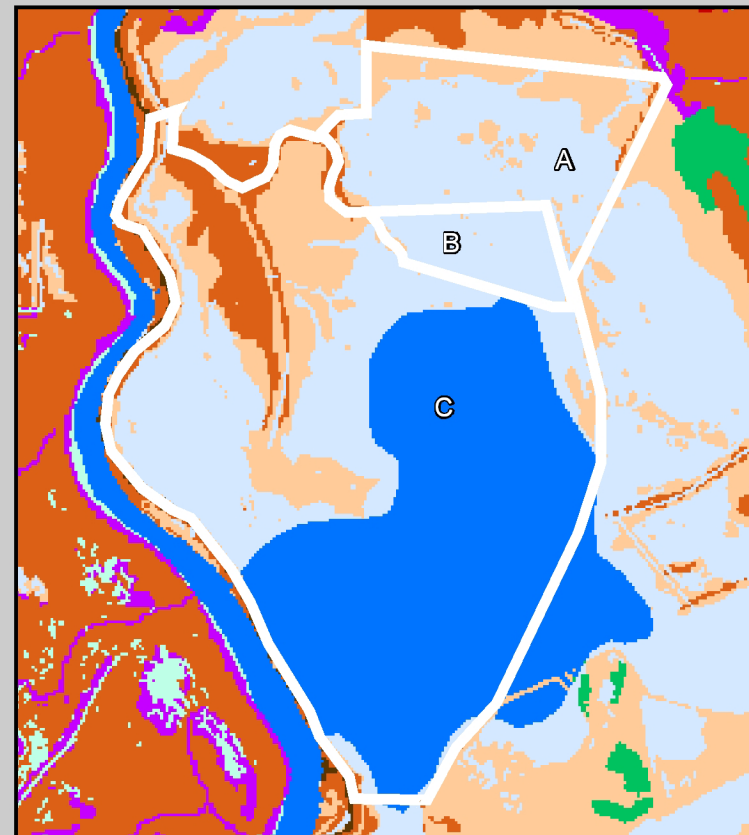


Area A		
Class		Acres
Fresh Water		39
Bottomland Forest		38
Cypress Forest		2
Floating Aquatic Bed		687
Fresh Marsh		223
Total Acres		989

Area B		
Class		Acres
Fresh Water		33
Floating Aquatic Bed		248
Total Acres		281

Area C		
Class		Acres
Fresh Water		2718
Agriculture/Pasture		41
Bottomland Forest		242
Cypress Forest		133
Floating Aquatic Bed		565
Fresh Marsh		640
Upland Shrub/Scrub		3
Total Acres		4342

2000 Louisiana Coastal Area Habitat

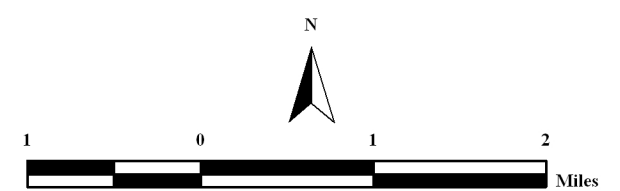
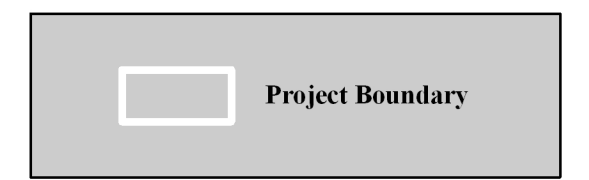
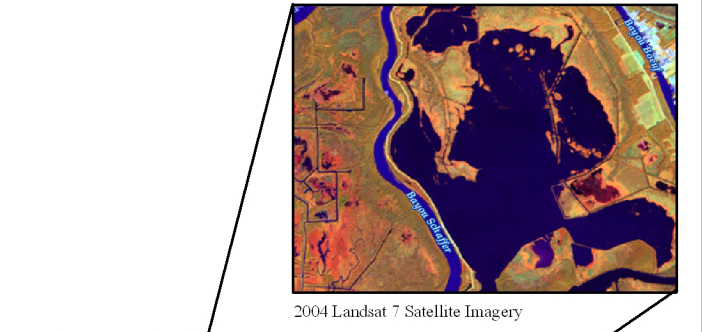


Area A		
Class		Acres
Fresh Marsh		283
Swamp		1
Wetland Forest		30
Water-Fresh Zone		675
Total Acres		989

Area B		
Class		Acres
Fresh Marsh		12
Water		1
Water-Fresh Zone		268
Total Acres		281

Area C		
Class		Acres
Agriculture/Pasture		18
Fresh Marsh		684
Wetland Forest		331
Water		2166
Water-Fresh Zone		1143
Total Acres		4342

The 2000 Louisiana Coastal Area habitat data composition for this project area is a hybrid dataset consisting of:
-1993 Land Cover Classification for the Louisiana Gap Analysis Project
-November 24, 1999 Landsat 7 TM Classified Land/Water Data
-2001 Louisiana Coastal Marsh Vegetative Type Map



Habitat Data Source:
U.S. Department of the Interior
U.S. Geological Survey
National Wetlands Research Center

Map Produced By:
U.S. Department of the Interior
U.S. Geological Survey
National Wetlands Research Center
Coastal Restoration Field Station
Baton Rouge, La

Map ID: USGS-NWRC 2006-11-0021
Map Date: November 30, 2005