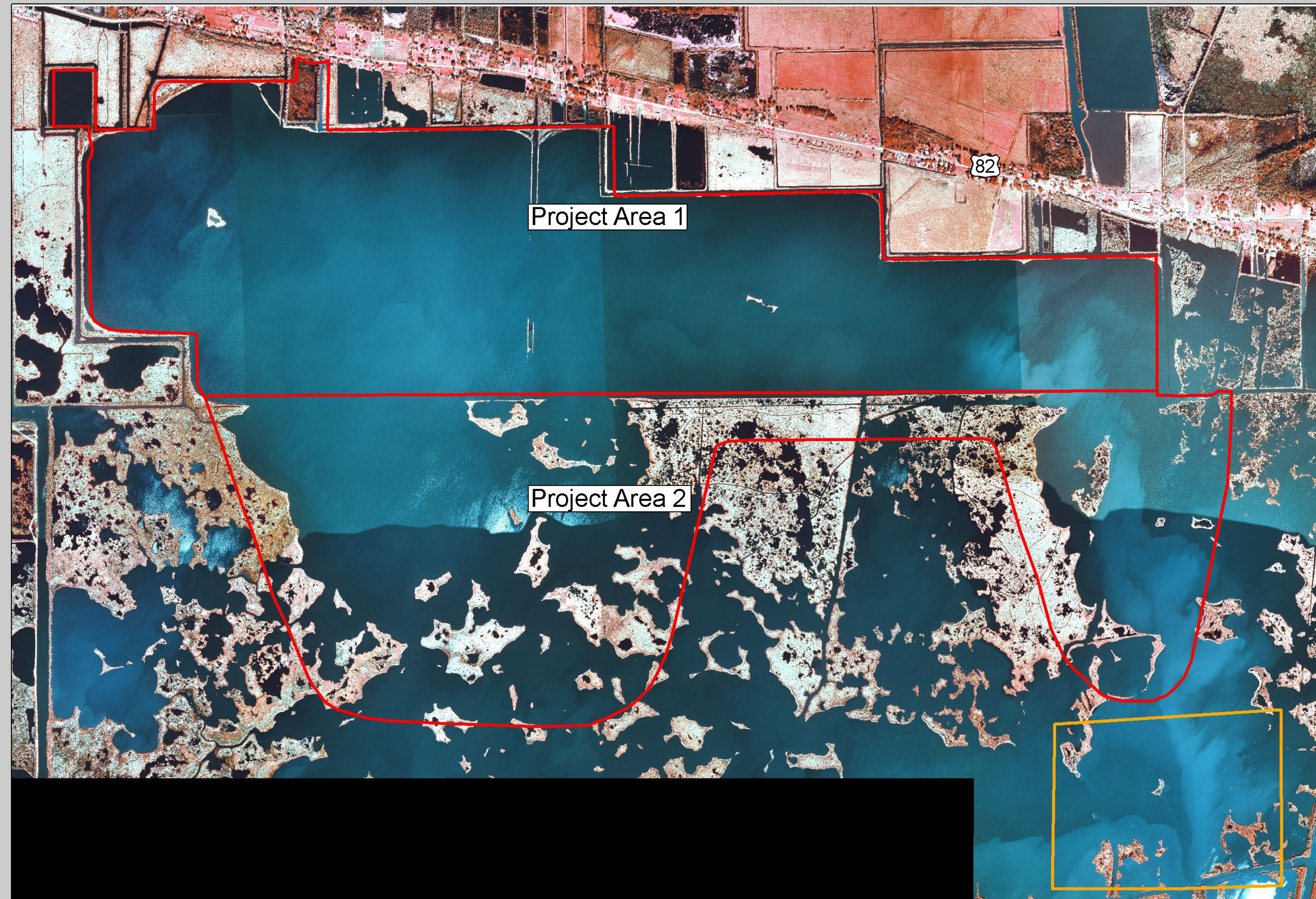


Pecan Island Terracing (ME-14)

Coastal Wetlands Planning, Protection and Restoration Act

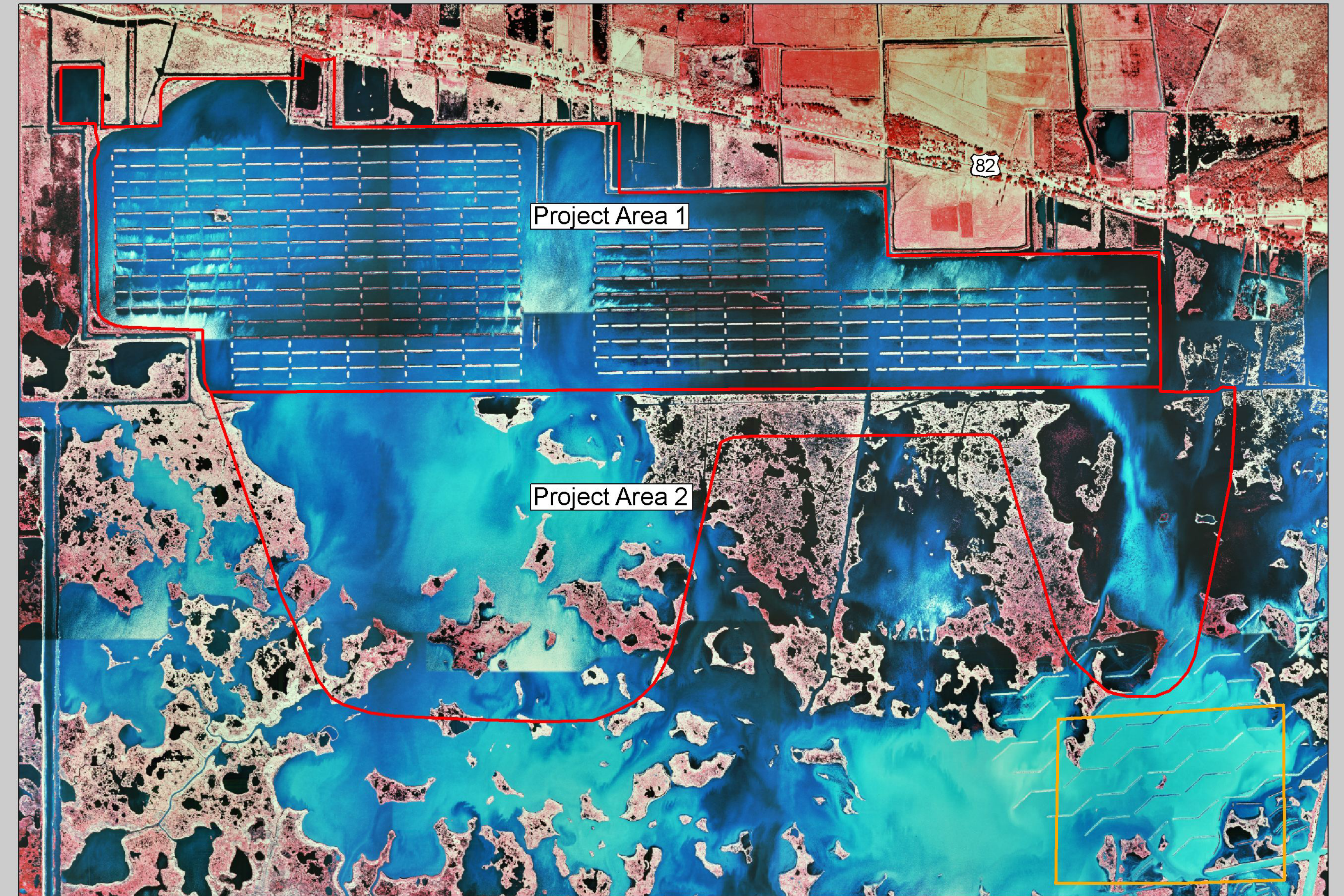
2001 and 2004 Photomosaics and Land-Water Analyses

2001 Photomosaic



Project Description:
 This project is located in southeastern Vermilion Parish, Louisiana, approximately 5 miles (8.05 km) north of the Gulf of Mexico, just south of Pecan Island and Louisiana Highway 82. Deterioration and loss of the perimeter levees between 1978 and 1988 caused the entire area to convert to a shallow lake with some sporadic small islands. The Pecan Island Terracing (ME-14) project is expected to create approximately 100 acres (40.5 ha) of marsh initially and to create 300 acres (121.4 ha) over the 20-year life of the project. The project features include constructing 172,000 linear ft (52,426 m) of terraces in a 500-ft (152.4 m) section with a 50 ft (15.2 m) break between each terrace, creating approximately 344 terraces. The terraces were constructed by depositing borrow material with a 40-ft-wide (12.2 m) berm to make a terrace with 4:1 side slopes and a top width of 10 ft (3.1 m). The initial constructed terrace elevation is 3.75 ft (1.14 m) above marsh elevation; the final settled vertical height in 5 years should be approximately 1 ft (.30 m) above marsh elevation. Breaks were constructed to permit water to move in and out of the interior, which will facilitate the settling of suspended soil particles. Smooth cordgrass (*Spartina alterniflora*) plugs were planted every 5 linear ft (1.5 m) on both sides of each terrace. In the reference area of this project, 15 randomly selected terraces will remain unplanted to serve as control and to assess vascular plant colonization independent of the plantings.

2004 Photomosaic



2001 Land-Water Analysis



Project Area
 Reference Area

Project Area 1 Acreages

| Class | 2001 | 2004 |
|------------------------|--------------|--------------|
| Land | 46 | 39 |
| Water | 1,892 | 1,698 |
| Terrace, Vegetated | 0 | 134 |
| Terrace, Non-Vegetated | 0 | 67 |
| TOTAL | 1,938 | 1,938 |

Project Area 2 Acreages

| Class | 2001 | 2004 |
|------------------------|--------------|--------------|
| Land | 395 | 337 |
| Water | 1,320 | 1,375 |
| Terrace, Vegetated | 0 | <1 |
| Terrace, Non-Vegetated | 0 | 3 |
| TOTAL | 1,715 | 1,715 |

Reference Area Acreages

| Class | 2001 | 2004 |
|------------------------|------------|------------|
| Land | 28 | 24 |
| Water | 294 | 284 |
| Terrace, Vegetated | 0 | 1 |
| Terrace, Non-Vegetated | 0 | 13 |
| TOTAL | 322 | 322 |

Project Location



Vermilion Parish

2004 Land-Water Analysis



Scale = 1:17,000

