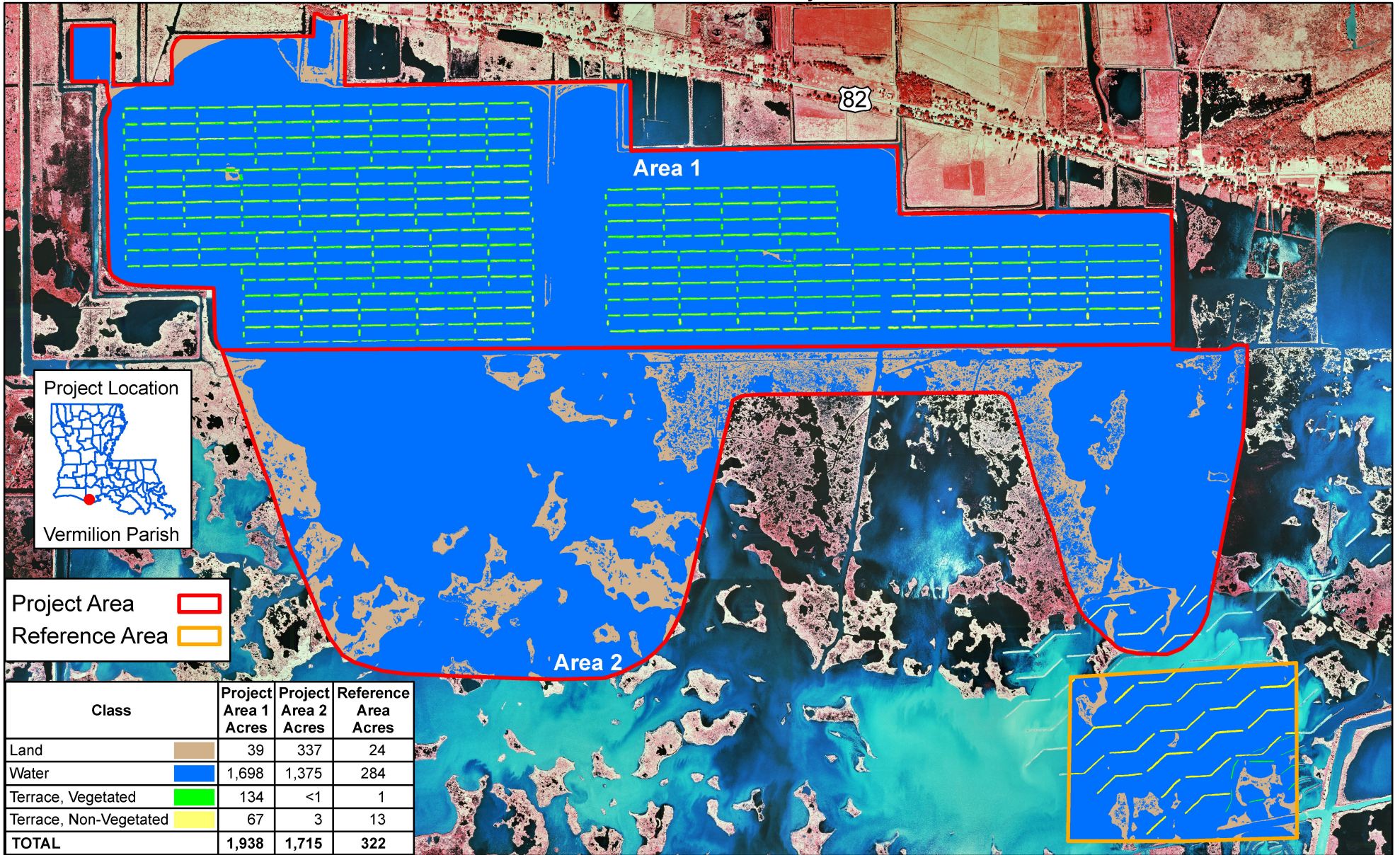


# Pecan Island Terracing (ME-14)

## Coastal Wetlands Planning, Protection and Restoration Act

### 2004 Land-Water Analysis

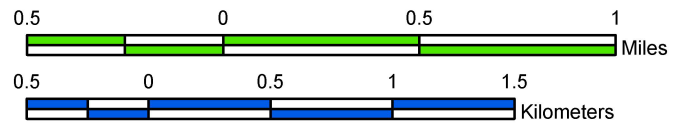


Project Area   
 Reference Area

Prepared by:  
 U.S. Department of the Interior  
 U.S. Geological Survey  
 National Wetlands Research Center  
 Lafayette, Louisiana  
 and  
 Louisiana Department of Natural Resources  
 Coastal Restoration Division  
 Lafayette Field Office



Scale = 1:31,000



Data Source:  
 The land-water data were  
 obtained from 1:12,000  
 scale, color infrared aerial  
 photography acquired  
 November 25, 2004.

Federal Sponsor:  
 National Marine Fisheries Service

