

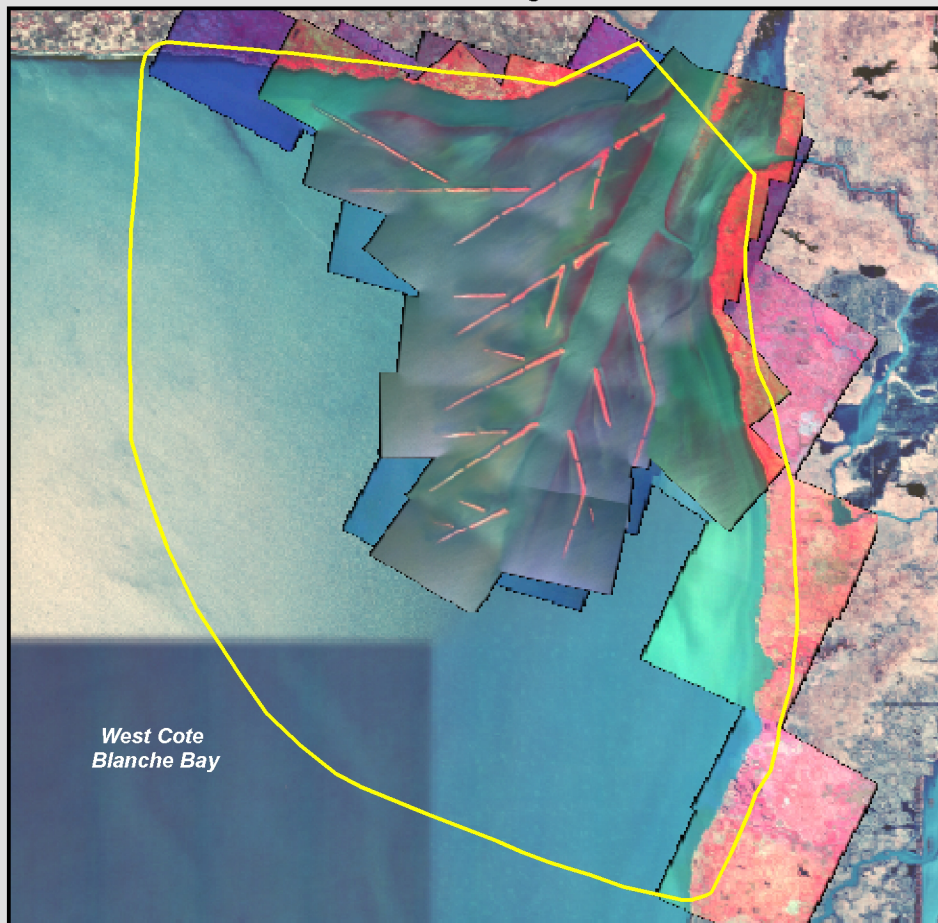
2004 Preconstruction CIR Photomosaic



2004 Preconstruction Land-Water Analysis



2004/2005 Postconstruction Digital CIR Photomosaics



2004/2005 Postconstruction Land-Water Analysis



**Data Sources:**

National Aerial Photography Program (NAPP) color infrared (CIR) photography for the preconstruction analysis, and the postconstruction base map, was acquired on February 19 and March 9, 2004, at 1:40,000 scale. Postconstruction CIR digital photography for the analysis was acquired by USGS equipment on December 20, 2004, and March 23, 2005, at 8,500 ft. Ground Sampling Distance = 0.70 m.

**Land-Water Classification:**

Coastal land-water classification is variable based on water level. The land class includes vegetated areas of marsh. The vegetated and non-vegetated terrace class includes areas of terrace above the water line when photographed. Because of gaps in the March 2005 CIR image, scenes of digital data from December 20, 2004, were used to complete area coverage for the analysis.

**Classification Results (Acres)**

Class	Pre-construction	Post-construction
Land <span style="color: brown;">■</span>	294	298 *
Vegetated and Non-vegetated Terrace <span style="color: yellow;">■</span>	0	48 **
Water <span style="color: blue;">■</span>	4,251	4,199
<b>Totals</b>	<b>4,545</b>	<b>4,545</b>

\* This area estimate is derived from December 20, 2004, photography.  
\*\* This area estimate is derived from March 23, 2005, photography.

Project Boundary

Project Location



Prepared by:  
U.S. Department of the Interior  
U.S. Geological Survey  
National Wetlands Research Center  
Lafayette, Louisiana

