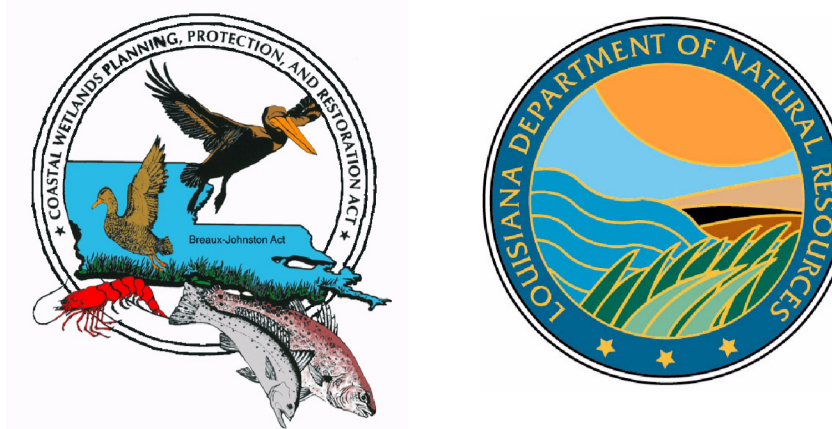
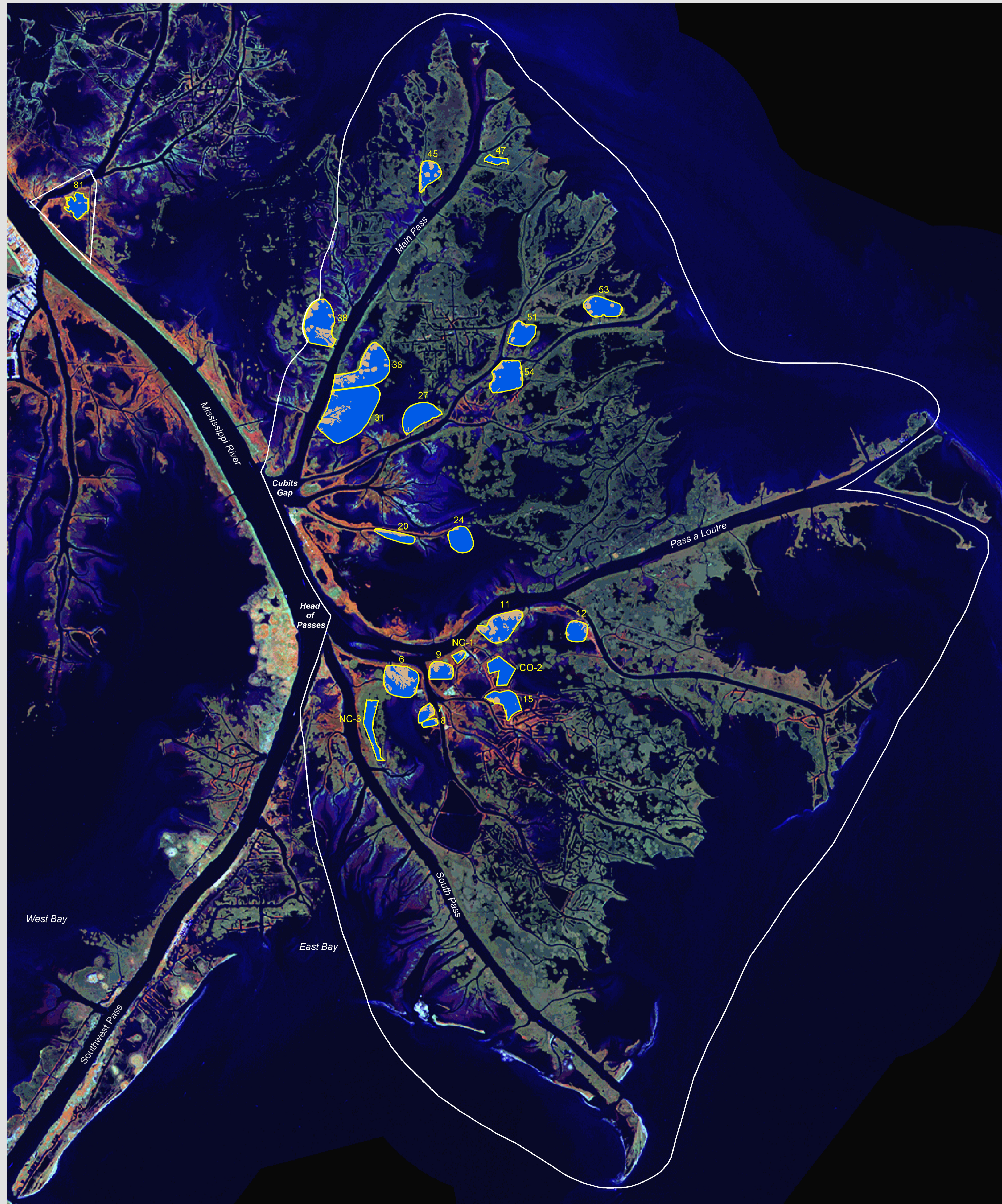


Delta Wide Crevasses (MR-09)

Coastal Wetlands Planning, Protection and Restoration Act 2001 and 2002 Land-Water Analyses



2001 Land-Water Analysis



Project Description:

The Delta Wide Crevasses (MR-09) project area is located in Plaquemines Parish on the active Mississippi River Delta.

Wetland creation processes on the Mississippi River Delta have been disrupted through the natural processes of subsidence and eustatic sea level rise, as well as through human activities. The major factors are dredging of navigation canals and construction of flood control levees. Navigation canals have caused saltwater intrusion into coastal marshes. Artificial levees divert necessary sediment flow onto the continental shelf and also prevent the seasonal flooding of marsh habitat.

This project attempts to mimic the natural crevasse formation process that was once so vital in delivering sediment and freshwater flow to the Mississippi River Delta. Crevasses are breaks in the levee that allow overbank deposition of sediments to occur in adjacent interdistributary receiving bays. The sediment carried in the water from a newly created crevasse quickly settles out of the water column and allows subaerial land to be created. This is the foundation for future colonization by marsh vegetation and wildlife habitat. Future growth of the newly created marsh occurs through sediment trapping action of the emergent vegetation.

This project consists of maintaining existing crevasse-splays, the construction of new crevasse-splays, and future maintenance of selected crevasse-splays in the Pass-A-Loutre Wildlife Management Area and the Delta National Wildlife Refuge. The crevasse-splays are numbered in yellow text.

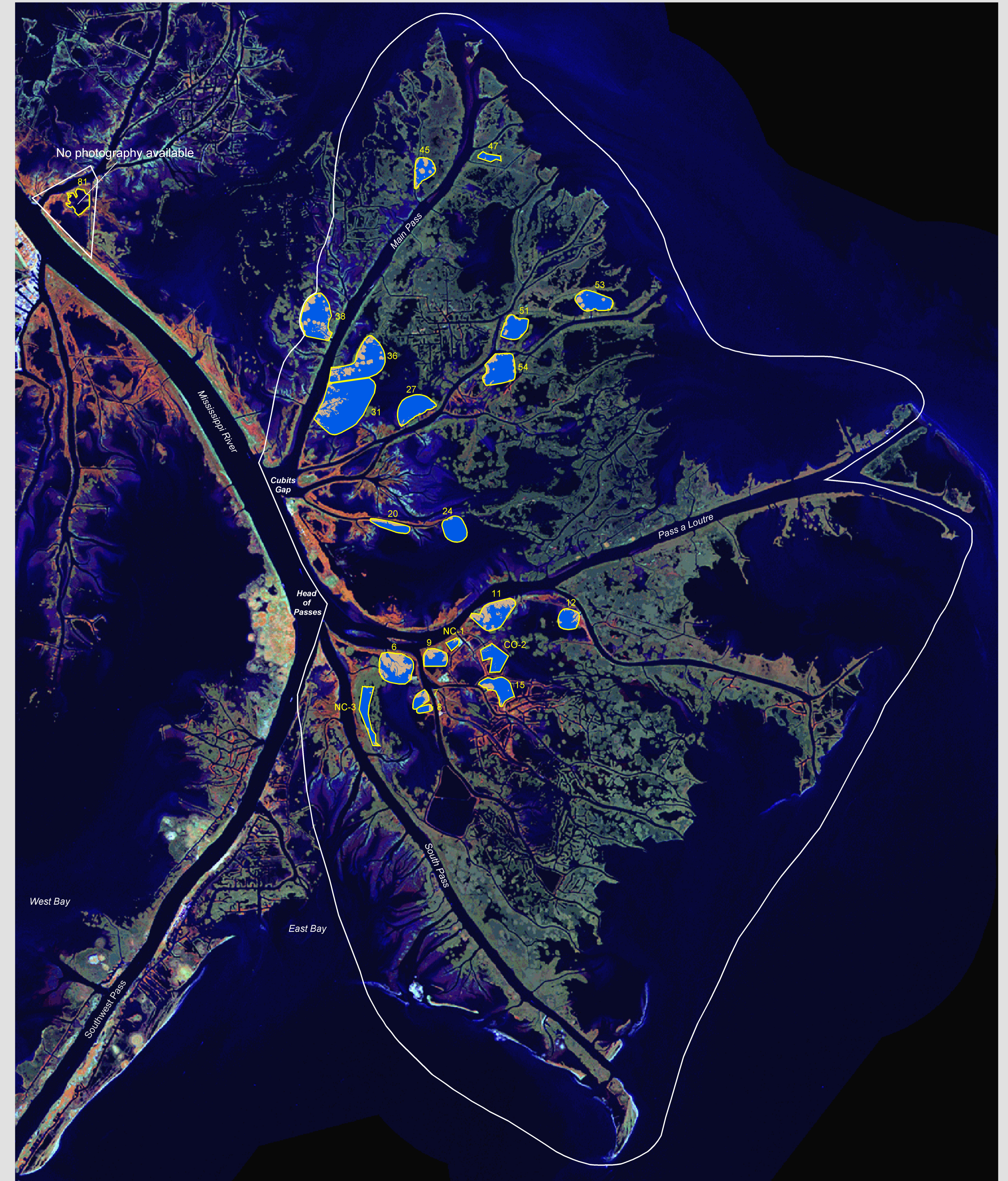
Class	2001 Crevasse Splay Acres	2002 Crevasse Splay Acres
Land	837	968
Water	3,530	3,263
Total	4,367	4,231

Note: The difference in the 2001 and 2002 acreage totals is due to missing photography in 2002.

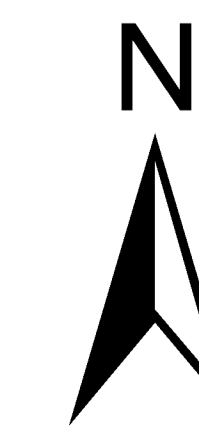
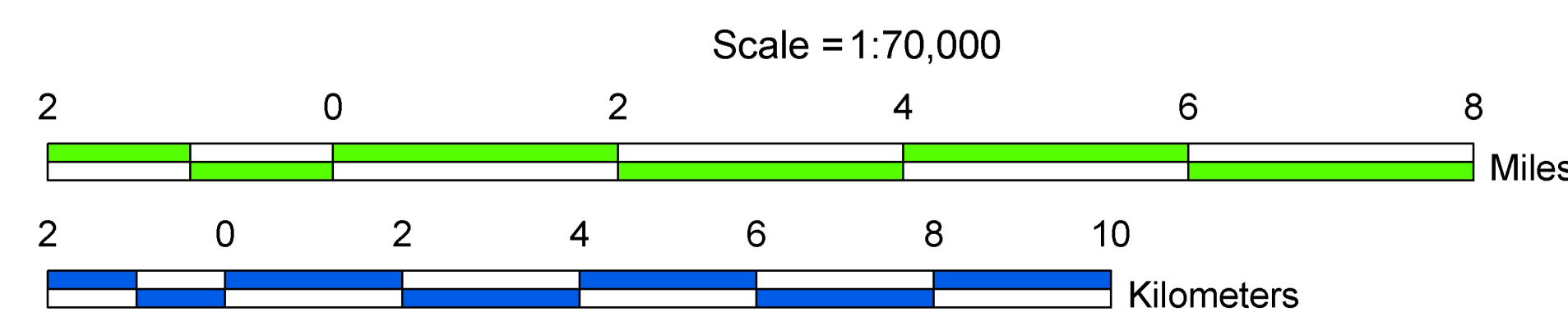
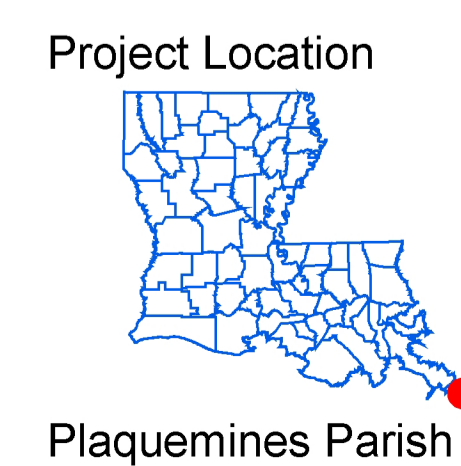
Data Source:

The land-water data were acquired from 1:24,000 scale color-infrared photography displayed here at 1:70,000 scale. Preconstruction photography was obtained on February 6, 2001. Postconstruction photography was obtained on December 14, 2002 and December 21, 2002. The background image is a 2000 Thematic Mapper panchromatic image.

2002 Land-Water Analysis



Prepared by:
U.S. Department of the Interior
U.S. Geological Survey
National Wetlands Research Center
Lafayette, LA
and
Louisiana Department of Natural Resources
Coastal Restoration Division
New Orleans Field Office



Project Area
Crevasse Splay Boundary

Federal Sponsor:
National Marine Fisheries Service

