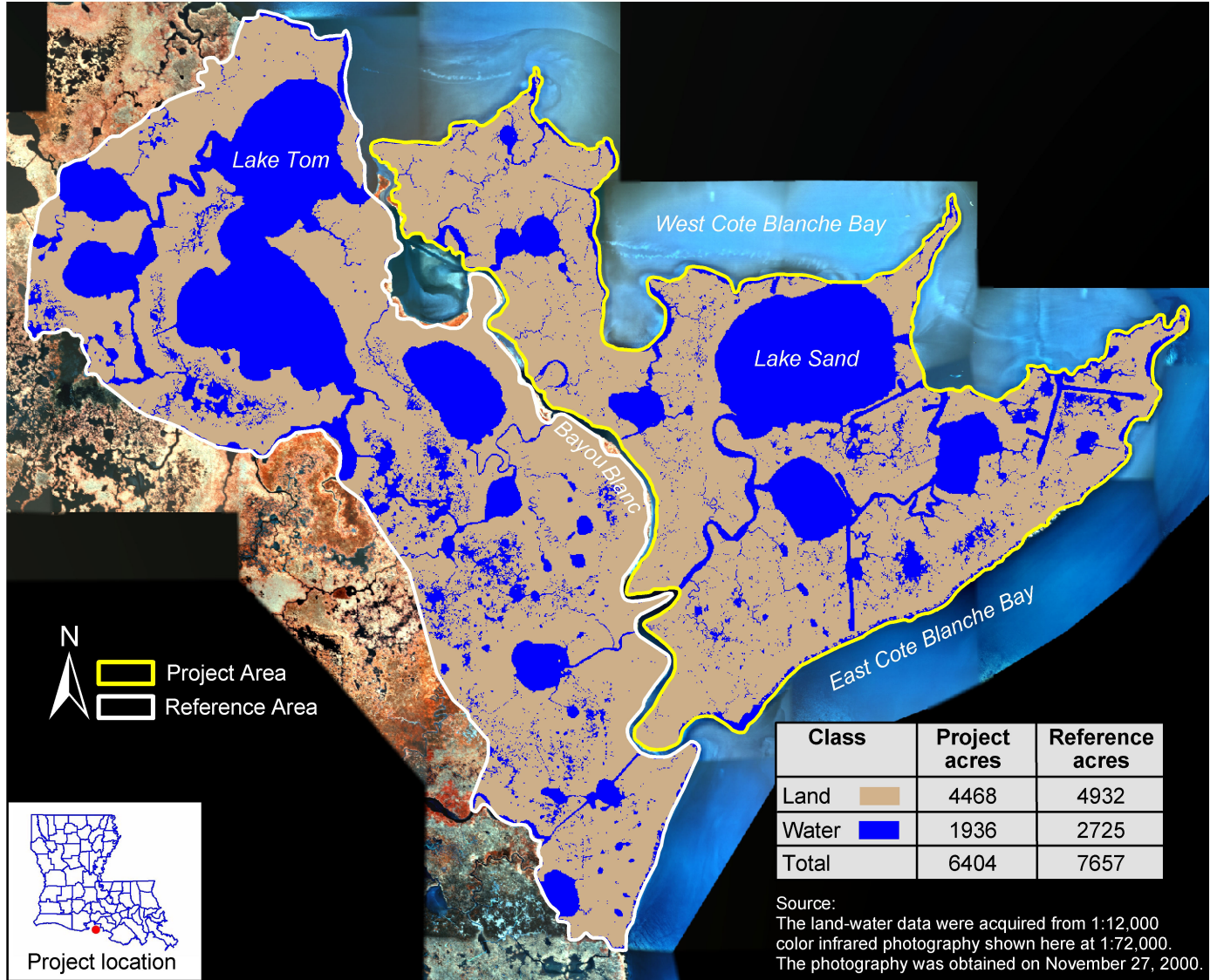




Marsh Island Hydrologic Restoration (TV-14)



Coastal Wetlands Planning, Protection and Restoration Act

2000 Land-Water Analysis



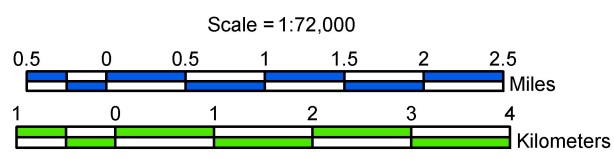

 Project Area
 Reference Area



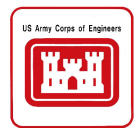
Class	Project acres	Reference acres
Land 	4468	4932
Water 	1936	2725
Total	6404	7657

Source:
 The land-water data were acquired from 1:12,000 color infrared photography shown here at 1:72,000. The photography was obtained on November 27, 2000.

Prepared by:
 U.S. Department of the Interior
 U.S. Geological Survey
 National Wetlands Research Center
 Lafayette, Louisiana
 and
 Louisiana Department of Natural Resources
 Coastal Restoration Division
 Lafayette Field Office



Federal Sponsor:
 US Army Corps of Engineers



Map ID: USGS-NWRC 2004-02-0001