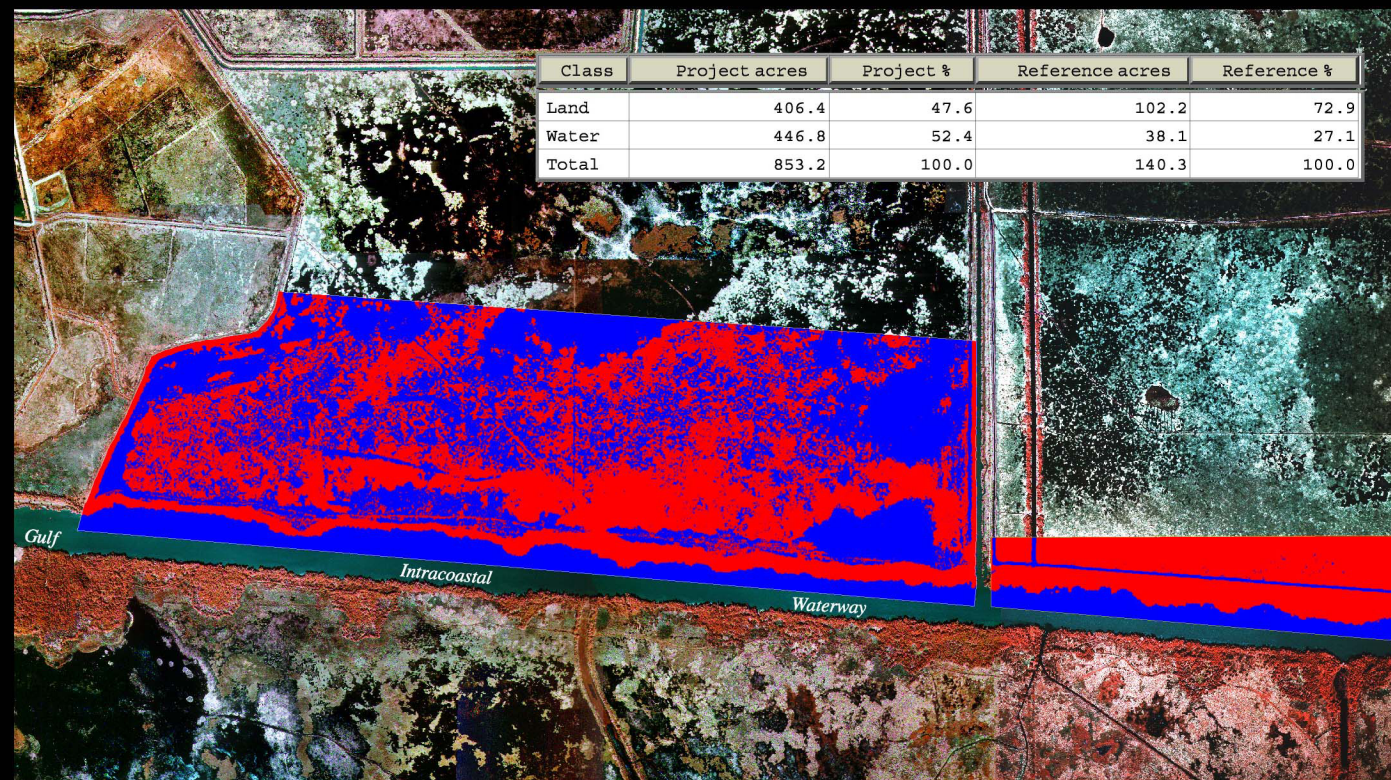
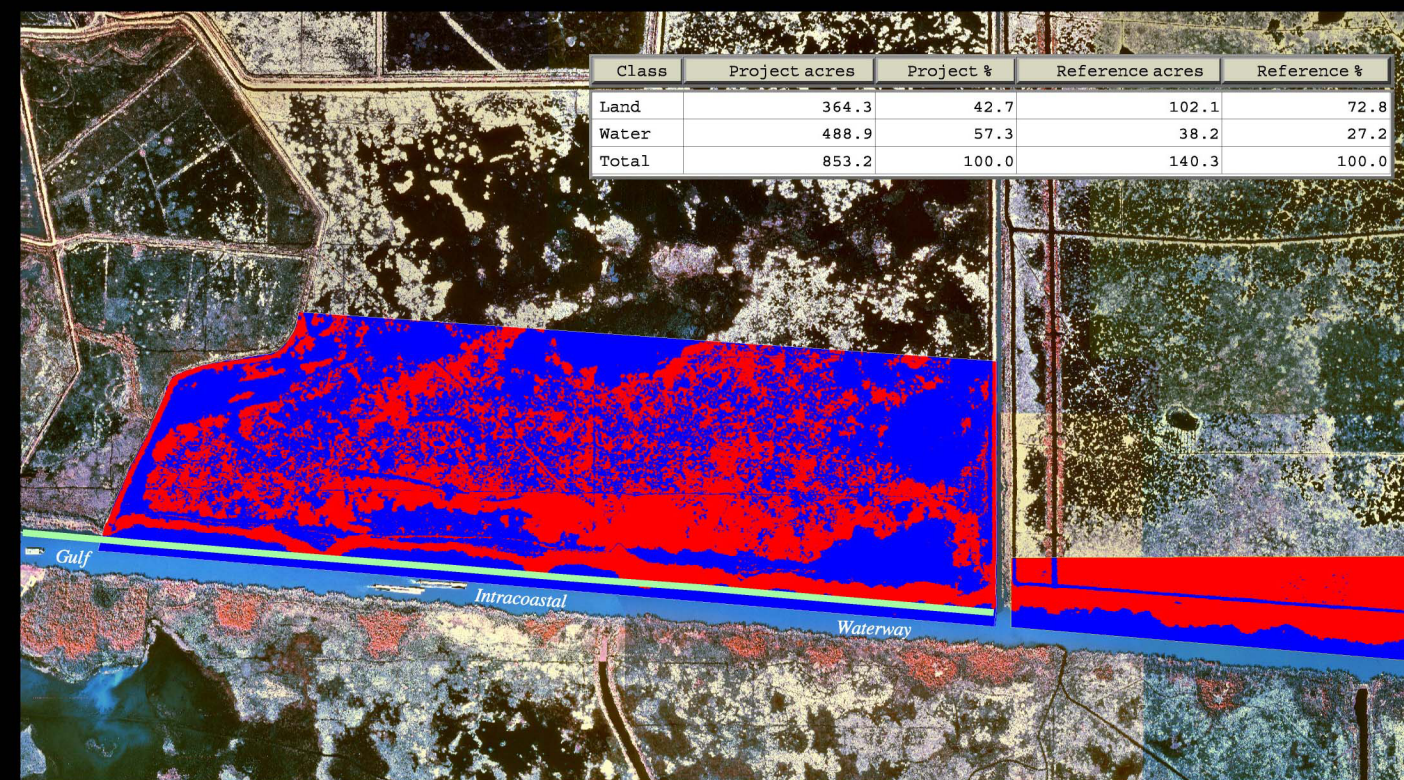


Cameron Prairie Shoreline Protection (ME-09) Coastal Wetlands Planning, Protection and Restoration Act 1993 and 1997 Land-Water Analyses




November 1, 1993

 Reference Area
 Project Area



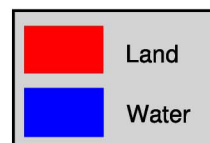
January 11, 1997

Construction of a 13,200 ft. (4,023 m) rock breakwater began on January 31, 1994 and ended August 03, 1994.

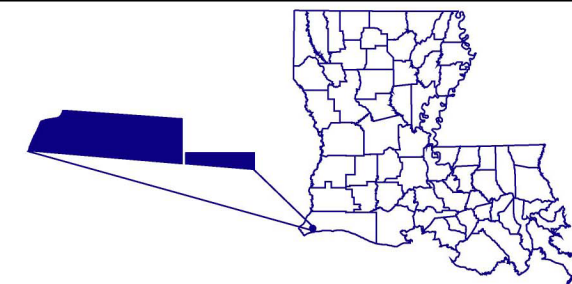
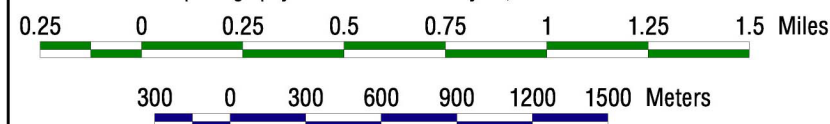
 Rock breakwater separating the GIWW from the Cameron Prairie National Wildlife Refuge

 Reference Area
 Project Area

Prepared by:
U.S. Department of the Interior
U.S. Geological Survey
National Wetlands Research Center
Lafayette, LA
and
Louisiana Department of Natural Resources
Coastal Restoration Division
Abbeville Field Office



Land-water data were derived from 1:12,000 scale color-infrared aerial photography shown here at 1:30,000 scale. Preconstruction photography was obtained November 1, 1993. Postconstruction photography was obtained January 11, 1997.



Federal Sponsor:
U.S. Fish and Wildlife Service



Map ID: 00-02-106