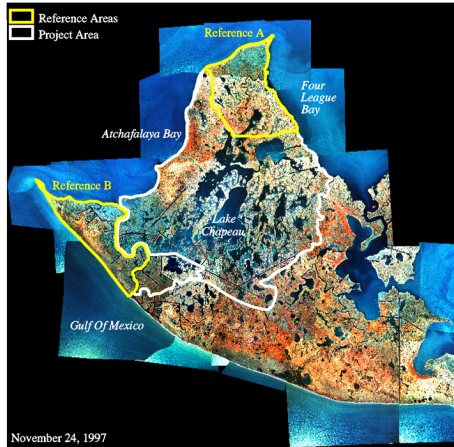
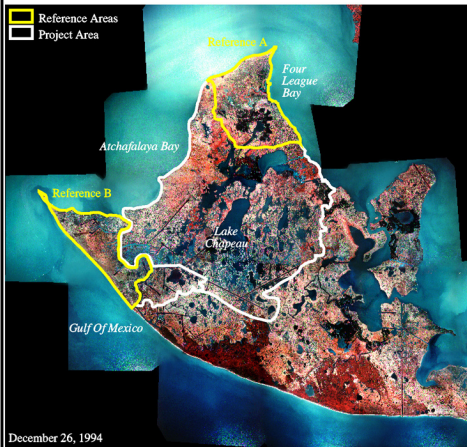


# Lake Chapeau Vegetative Plantings (TE-26)

## Coastal Wetlands Planning, Protection and Restoration Act

### 1994 & 1997 Photomosaics



Prepared by:  
U.S. Department of the Interior  
U.S. Geological Survey  
National Wetlands Research Center  
Lafayette, LA

and  
Louisiana Department of Natural Resources  
Coastal Restoration Division  
Thibodaux Field Office  
Thibodaux, Louisiana



Source:  
The 1:24,000 scale color infrared aerial  
photography was obtained on  
December 26, 1994 and November 24, 1997.



Federal Sponsor:  
National Oceanic and Atmospheric Administration  
National Marine Fisheries Service

