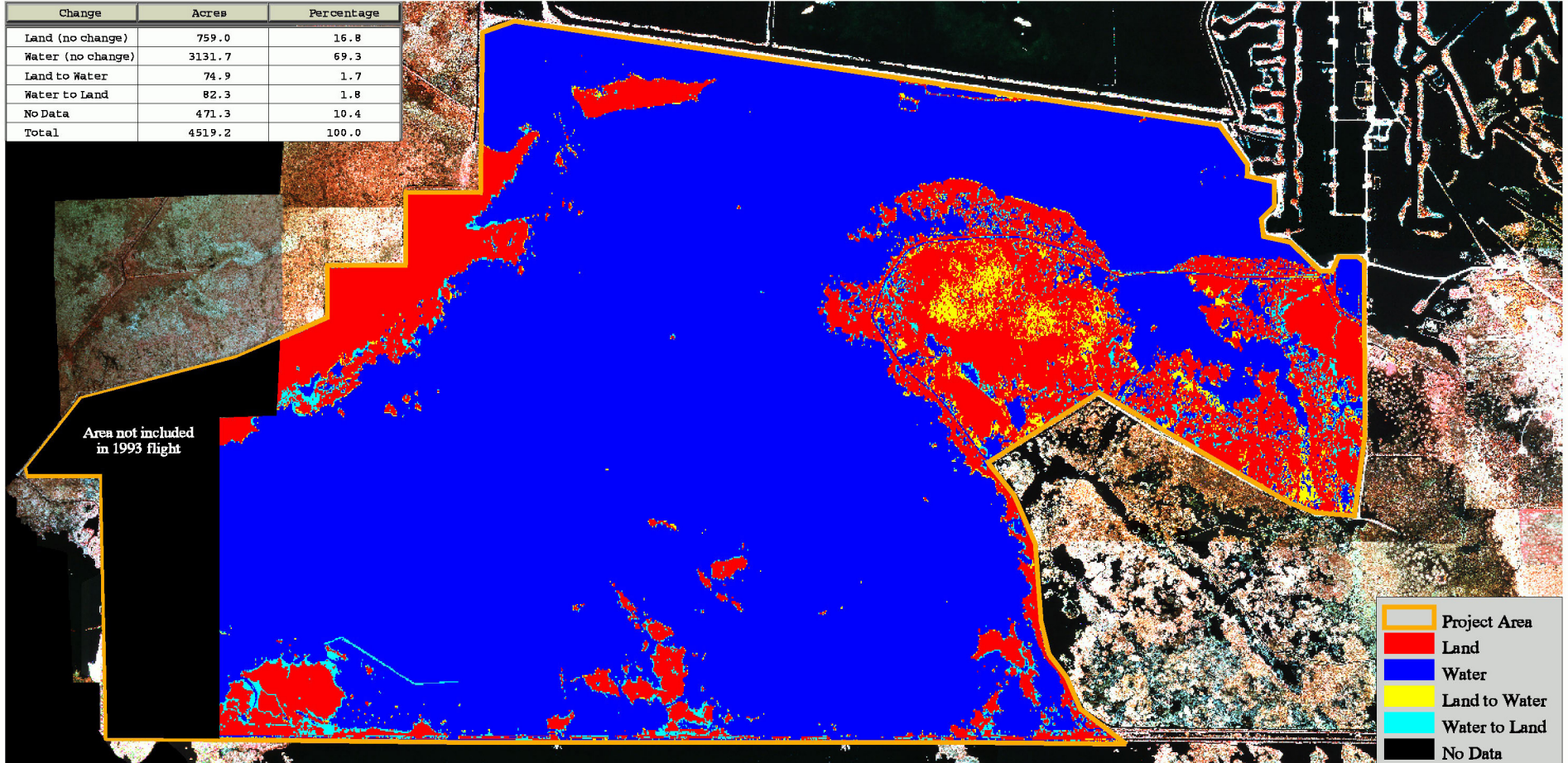




# West Hackberry Plantings & Sediment Enhancement (CS-19) Coastal Wetlands Planning, Protection and Restoration Act 1993-97 GIS Land-Water Change Analysis

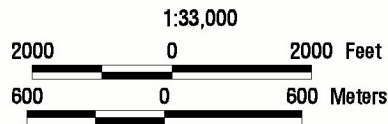


Change	Acres	Percentage
Land (no change)	759.0	16.8
Water (no change)	3131.7	69.3
Land to Water	74.9	1.7
Water to Land	82.3	1.8
No Data	471.3	10.4
<b>Total</b>	<b>4519.2</b>	<b>100.0</b>

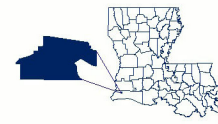


- Project Area
- Land
- Water
- Land to Water
- Water to Land
- No Data

Prepared by:  
U.S. Department of the Interior  
U.S. Geological Survey  
National Wetlands Research Center  
Lafayette, LA  
and  
Louisiana Department of Natural Resources  
Coastal Restoration Division  
Abbeville Field Office



Source:  
The change analysis is a comparison of the 1993 data to the 1997 data. It is overlaid onto 1:12,000 scale color infrared aerial photography obtained November 23, 1997.



Federal Sponsor:  
U.S. Department of Agriculture  
Natural Resources Conservation Service