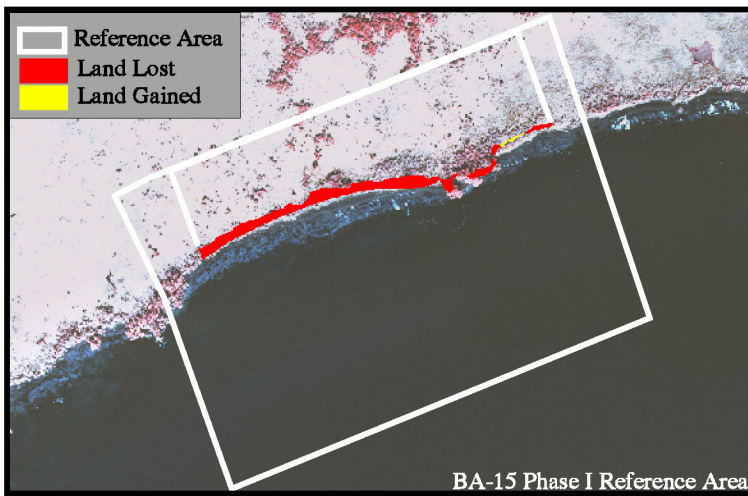
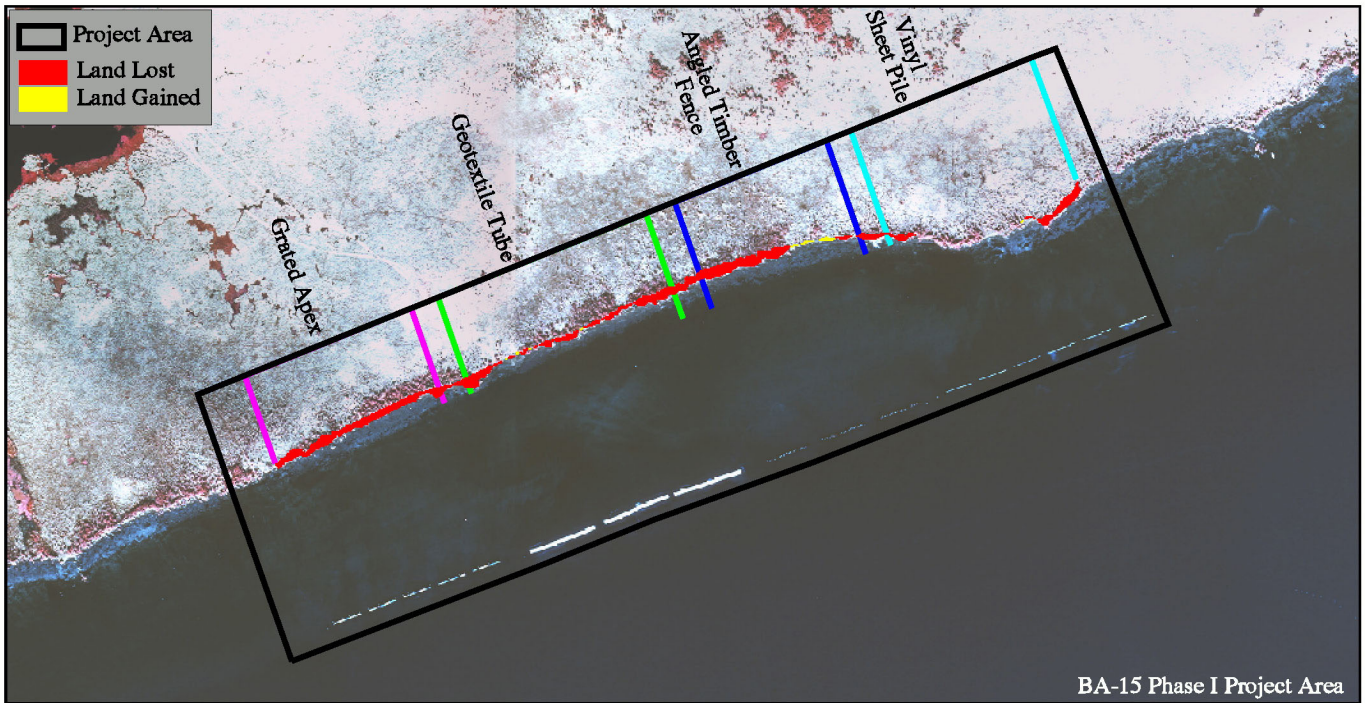


**Lake Salvador Shoreline Protection Phase I (BA-15)**  
**Coastal Wetlands Planning, Protection and Restoration Act**  
Shoreline Change: November 1997 - August 1999



**Project Area Change**

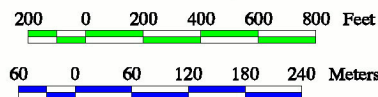
Area	Change Description	Square Feet
Total Area	Land lost	46,415.00
	Land gained	958.00
Grated Apex Structure	Land lost	13,380.00
	Land gained	0.00
Geotextile Tube Structure	Land lost	11,324.00
	Land gained	161.00
Angled Timber Fence Structure	Land lost	10,764.00
	Land gained	775.00
Vinyl Sheet Pile Structure	Land lost	5,522.00
	Land gained	22.00

**Reference Area Change**

Change Description	Square Feet
Land Lost	30,989.30
Land Gained	387.50

Prepared by:  
U.S. Department of the Interior  
U.S. Geological Survey  
National Wetlands Research Center  
Lafayette, Louisiana  
and  
Louisiana Department of Natural Resources  
Coastal Restoration Division  
Thibodaux, Louisiana

Color-infrared aerial photography taken  
December 18, 1997 at 1:12,000 scale.  
Shown here at 1:8,000 scale.



Federal Sponsor:  
National Oceanic and Atmospheric Administration  
National Marine Fisheries Service

