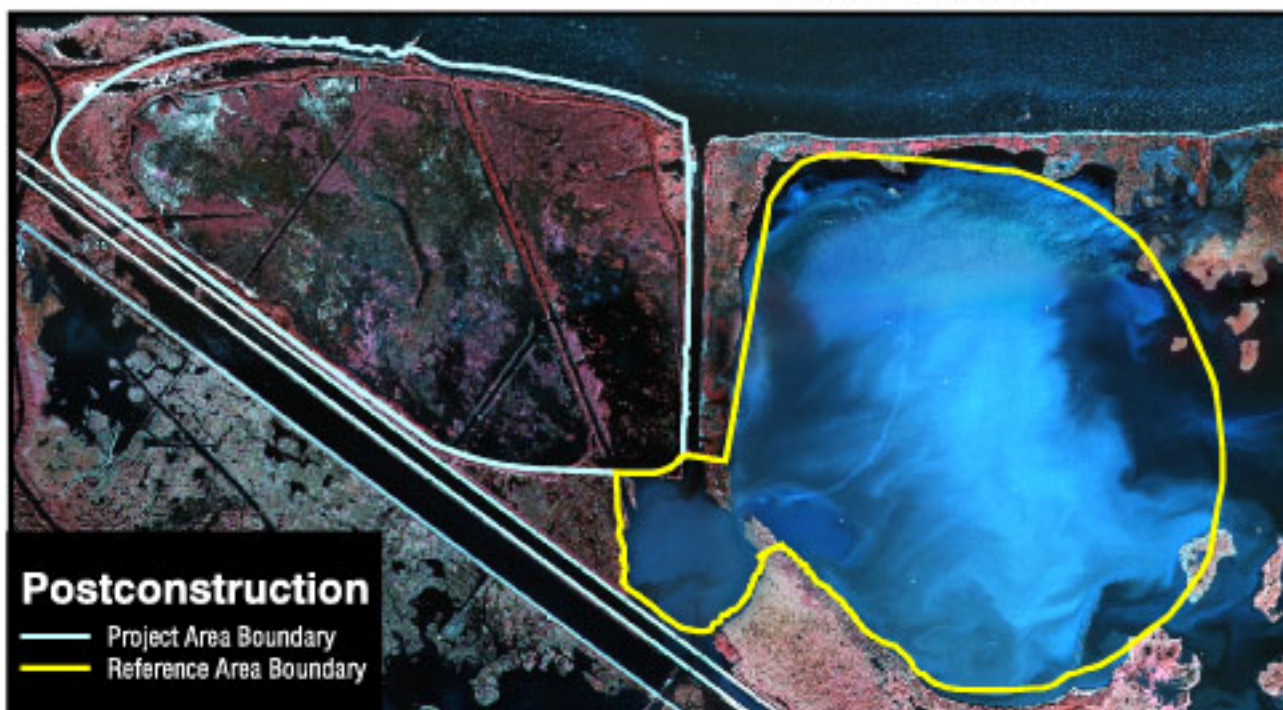


# Bayou La Branche (PO-17): Aerial Photography from 1993 and 1997



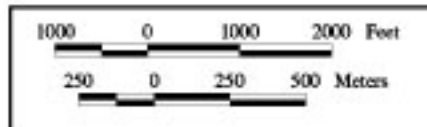
1:12,000 scale aerial photography taken November 7, 1993, shown here at 1:23,000 scale.



1:12,000 scale aerial photography taken November 17, 1997, shown here at 1:23,000 scale.

U.S. Department of the Interior  
United States Geological Survey  
National Wetlands Research Center  
Lafayette, Louisiana

Federal Sponsor:  
U.S. Army Corps of Engineers



Louisiana Department of Natural Resources  
Coastal Restoration Division  
New Orleans Project Office

Map ID: 98-2-020