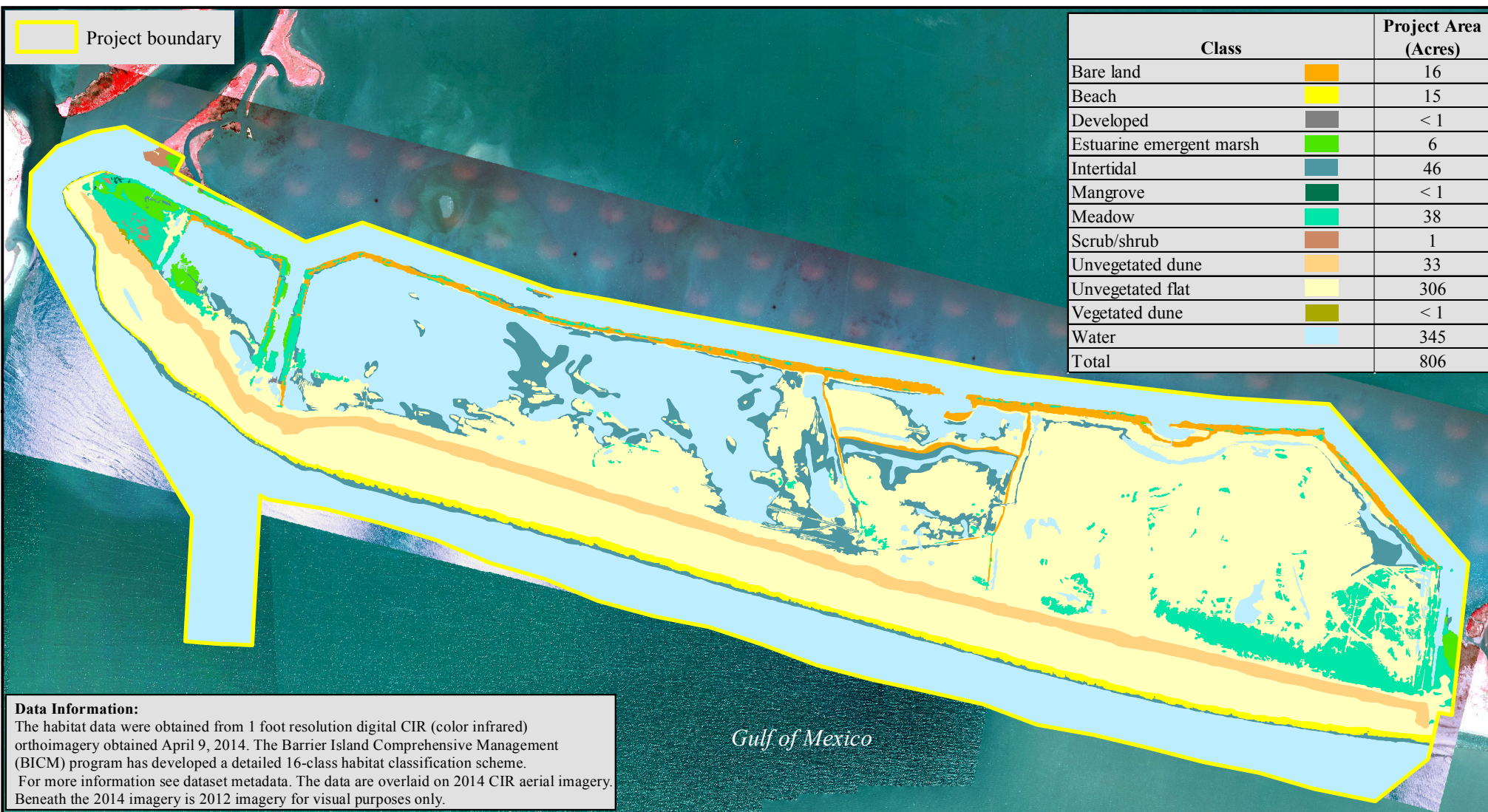


Riverine Sand Mining/Scofield Island Restoration (BA-40)

2014 Habitat Classification



Prepared by:
 U.S. Department of the Interior
 U.S. Geological Survey
 Wetland and Aquatic Research Center
 Lafayette, LA and
 Coastal Protection and Restoration Authority of Louisiana
 New Orleans Regional Office

Scale = 1:15,000

