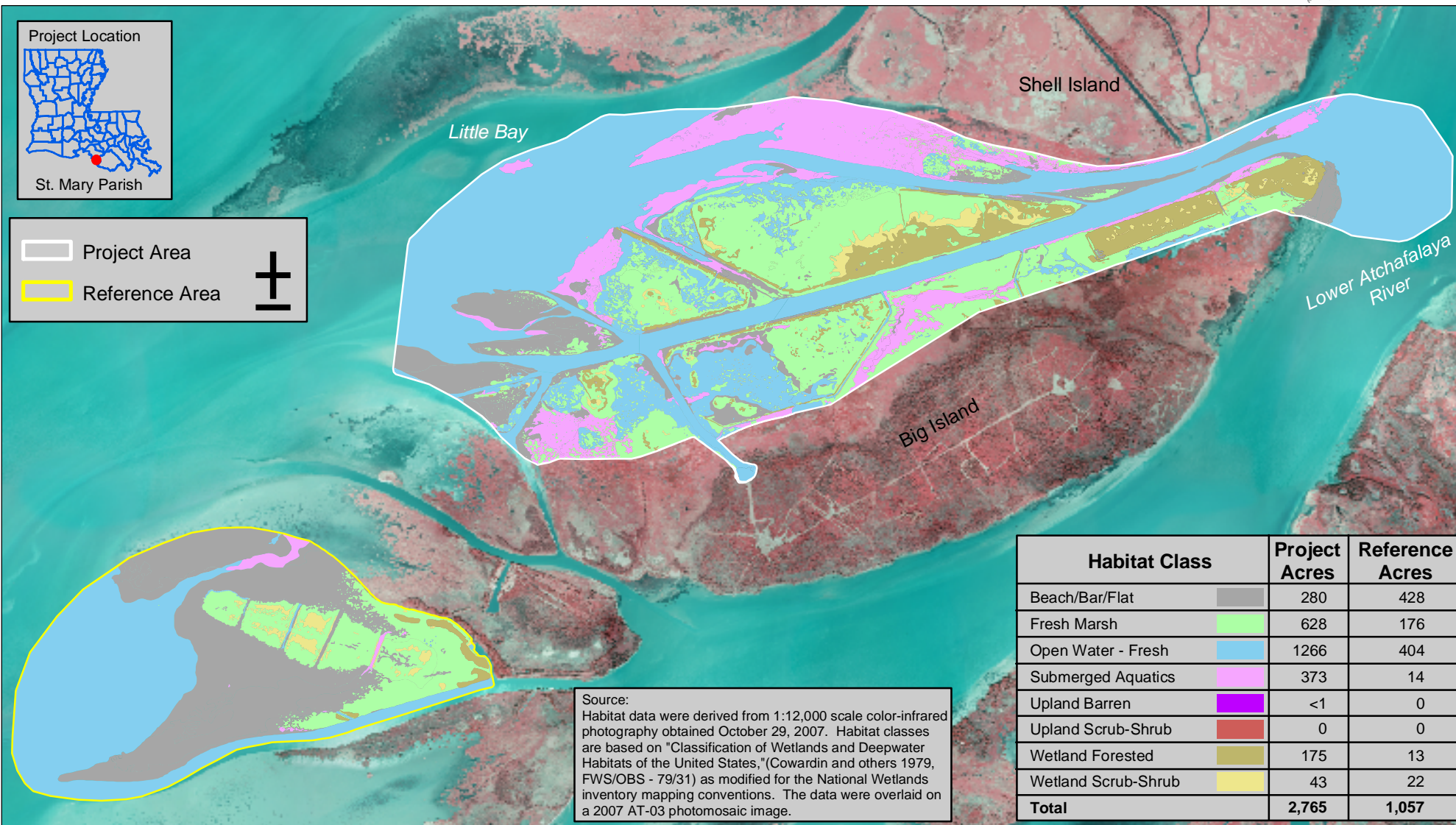
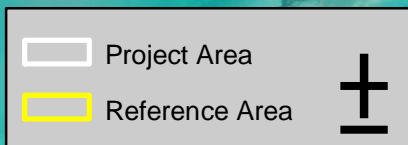
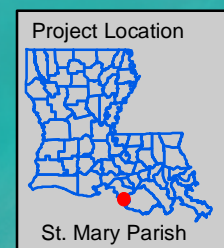


# Big Island Mining (AT-03)

## Coastal Wetlands Planning, Protection and Restoration Act

### 2007 Habitat Classification

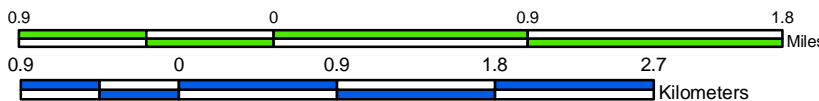


Source:  
Habitat data were derived from 1:12,000 scale color-infrared photography obtained October 29, 2007. Habitat classes are based on "Classification of Wetlands and Deepwater Habitats of the United States," (Cowardin and others 1979, FWS/OBS - 79/31) as modified for the National Wetlands inventory mapping conventions. The data were overlaid on a 2007 AT-03 photomosaic image.

Habitat Class	Project Acres	Reference Acres
Beach/Bar/Flat	280	428
Fresh Marsh	628	176
Open Water - Fresh	1266	404
Submerged Aquatics	373	14
Upland Barren	<1	0
Upland Scrub-Shrub	0	0
Wetland Forested	175	13
Wetland Scrub-Shrub	43	22
<b>Total</b>	<b>2,765</b>	<b>1,057</b>

Prepared by:  
U.S. Department of the Interior  
U.S. Geological Survey  
National Wetlands Research Center  
Lafayette, Louisiana  
and  
Coastal Protection and Restoration Authority of Louisiana  
Office of Coastal Protection and Restoration  
Thibodaux Field Office

Scale = 1:43,000



Federal Sponsor:  
National Oceanic and Atmospheric Administration  
National Marine Fisheries Service

