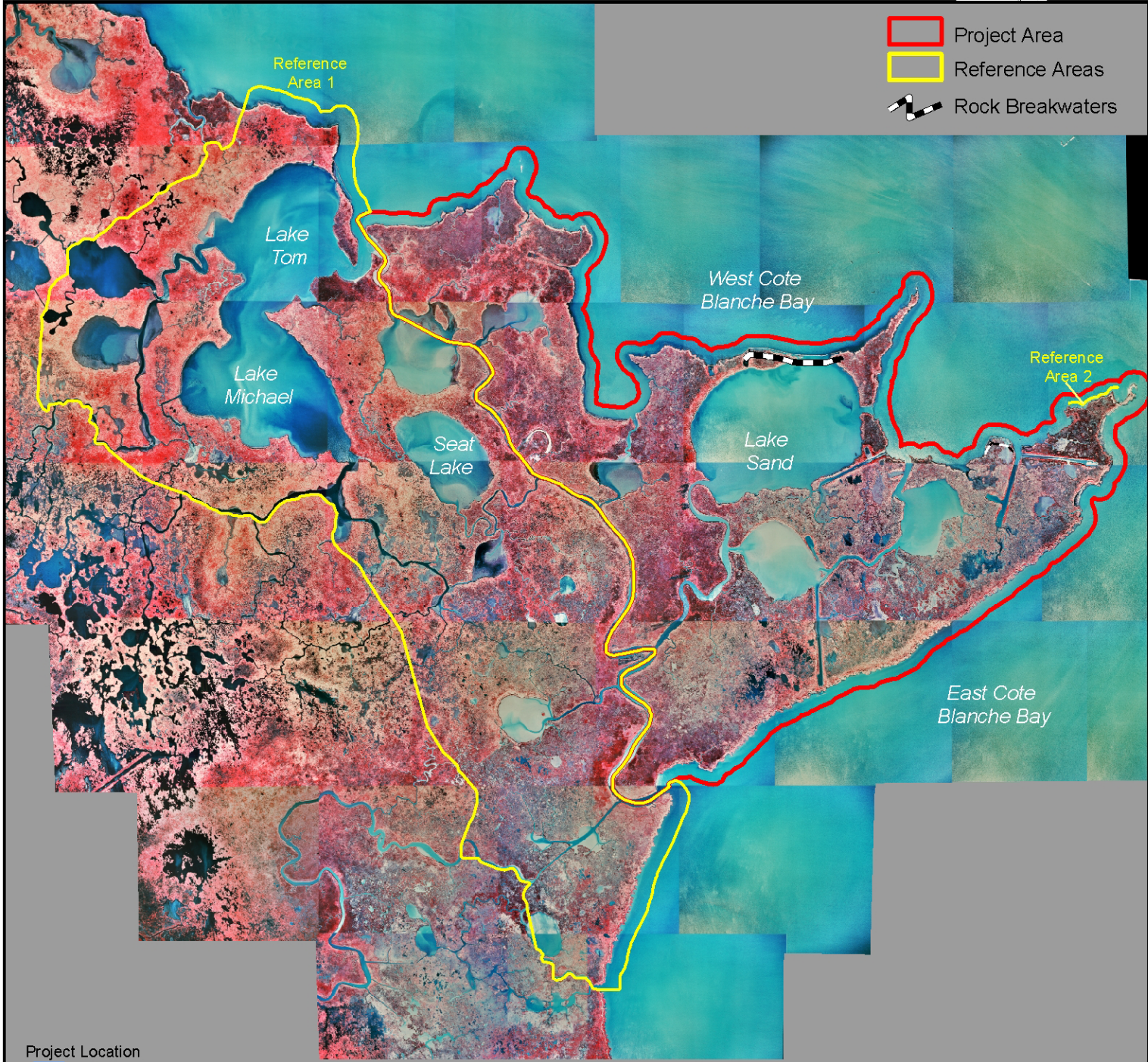


# Marsh Island Hydrologic Restoration (TV-14)

Coastal Wetlands Planning, Protection and Restoration Act  
2004 Photomosaic



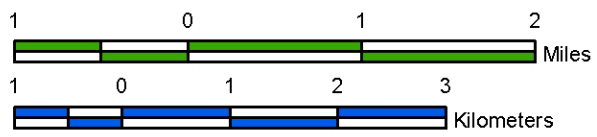
- Project Area
- Reference Areas
- Rock Breakwaters



Data Source:  
1:12,000 scale color infrared aerial  
photography acquired November 25, 2004.

Prepared by:  
U.S. Department of the Interior  
U.S. Geological Survey  
National Wetlands Research Center  
Lafayette, Louisiana  
and  
Louisiana Department of Natural Resources  
Coastal Restoration Division  
Lafayette Field Office

Scale 1:70,000



Federal Sponsor:  
U.S. Army Corps of Engineers

