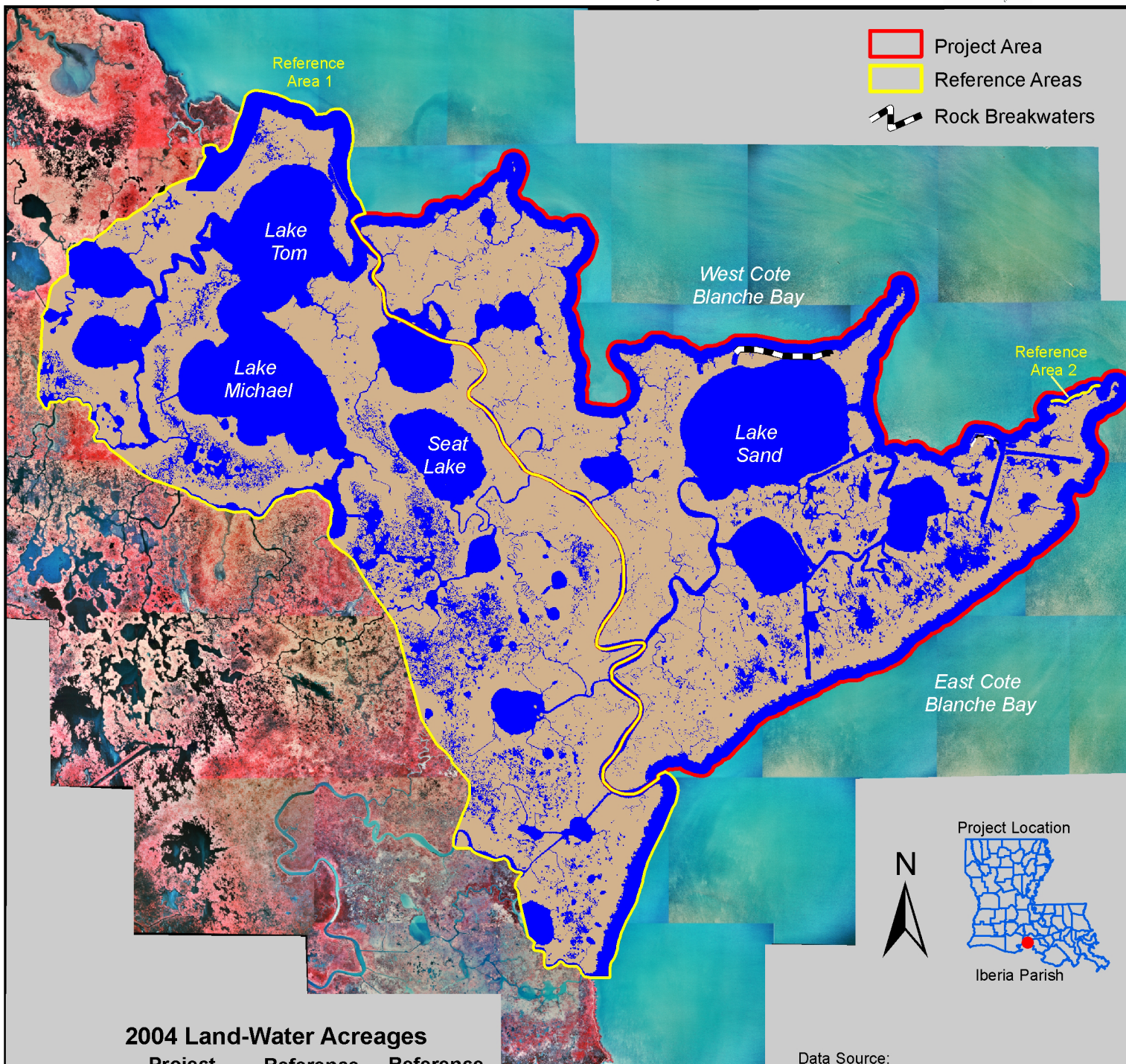
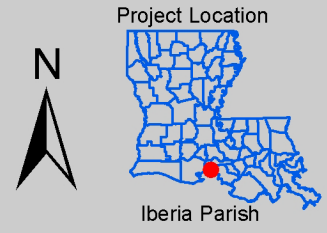


Marsh Island Hydrologic Restoration (TV-14)

Coastal Wetlands Planning, Protection and Restoration Act
2004 Land-Water Analysis



- Project Area
- Reference Areas
- Rock Breakwaters



2004 Land-Water Acreages

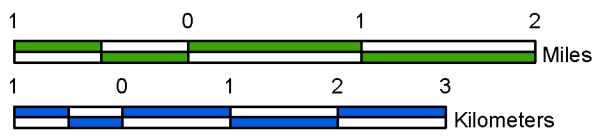
Class	Project Area	Reference Area 1	Reference Area 2 *
Land	4,290	4,765	0
Water	3,020	3,409	0
Total	7,310	8,174	0

* Reference Area 2 was created for comparison of shoreline positions only. It contains an insignificant amount of area and is, therefore, not included in the land-water analysis.

Data Source:
The land-water data were derived from 1:12,000 scale color infrared aerial photography acquired November 25, 2004. All areas characterized by emergent vegetation, wetland forest, upland, or scrub-shrub were classified as land, while open water, aquatic beds, and mudflats were classified as water.

Prepared by:
U.S. Department of the Interior
U.S. Geological Survey
National Wetlands Research Center
Lafayette, Louisiana
and
Louisiana Department of Natural Resources
Coastal Restoration Division
Lafayette Field Office

Scale 1:70,000



Federal Sponsor:
U.S. Army Corps of Engineers

