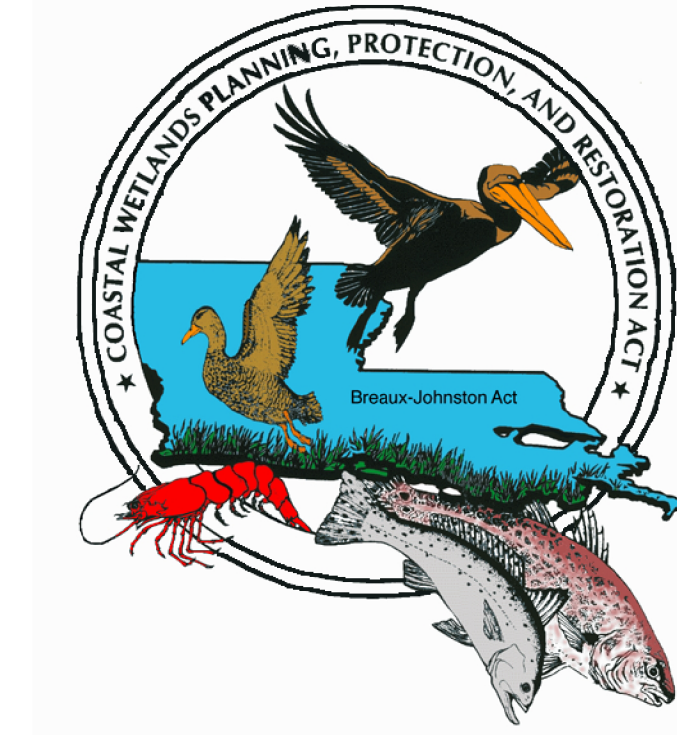


Four Mile Canal Terracing and Sediment Trapping (TV-18)

Coastal Wetlands Planning, Protection and Restoration Act

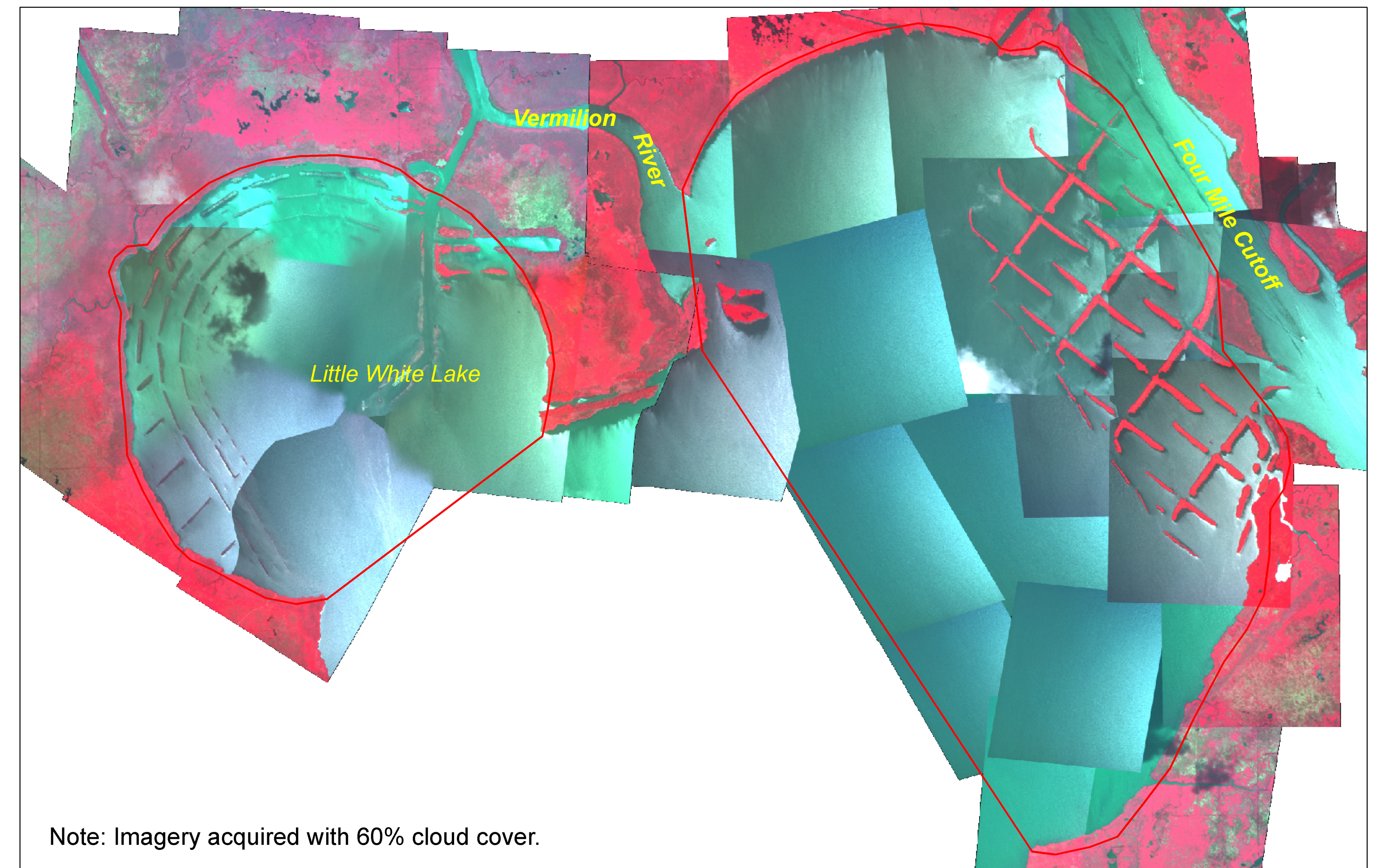
2000 and 2004 Land-Water Analysis



CIR Aerial Photography 2000



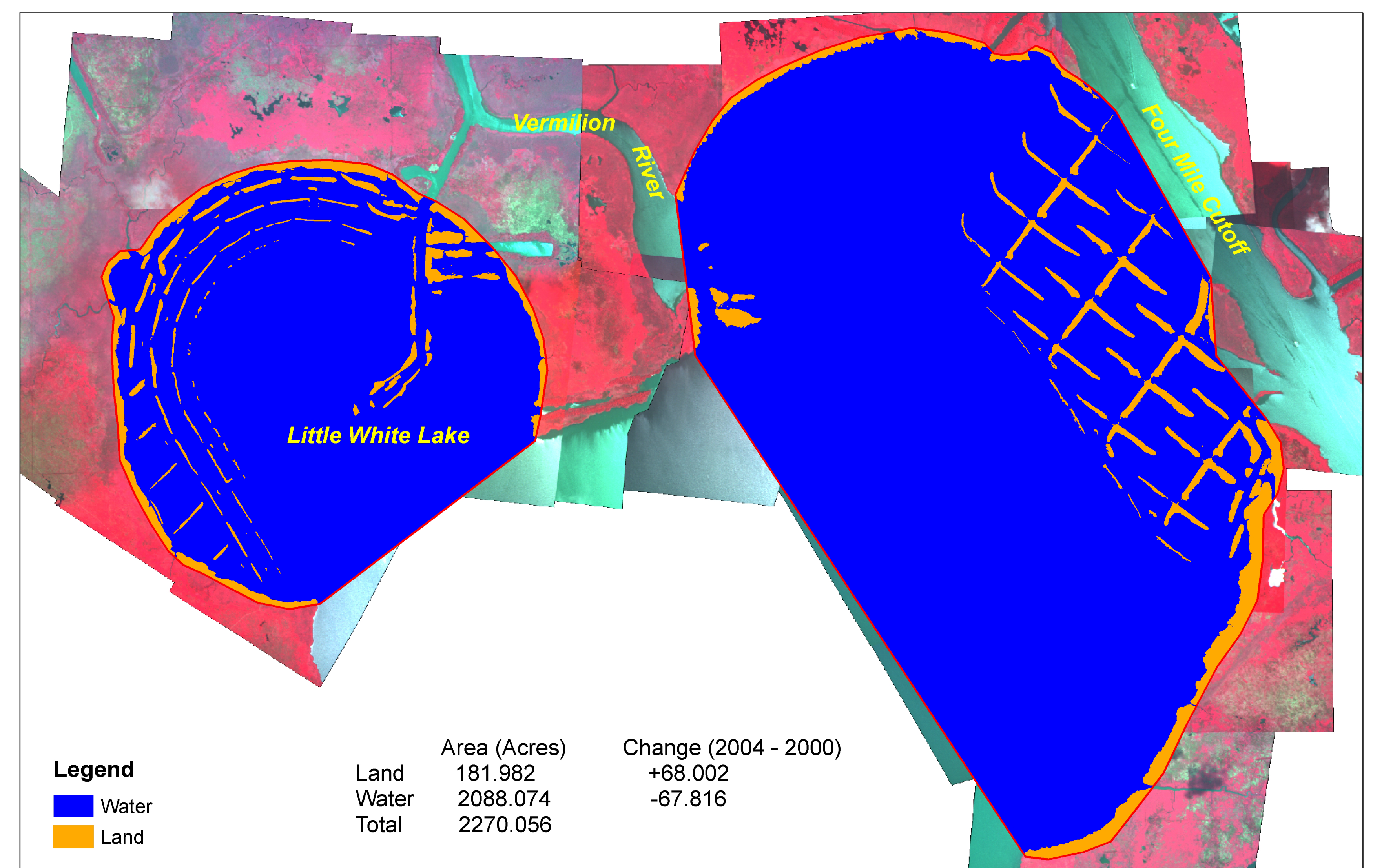
CIR Digital Camera Imagery 2004



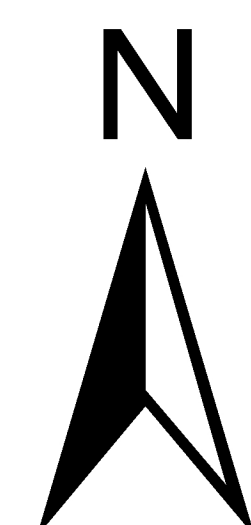
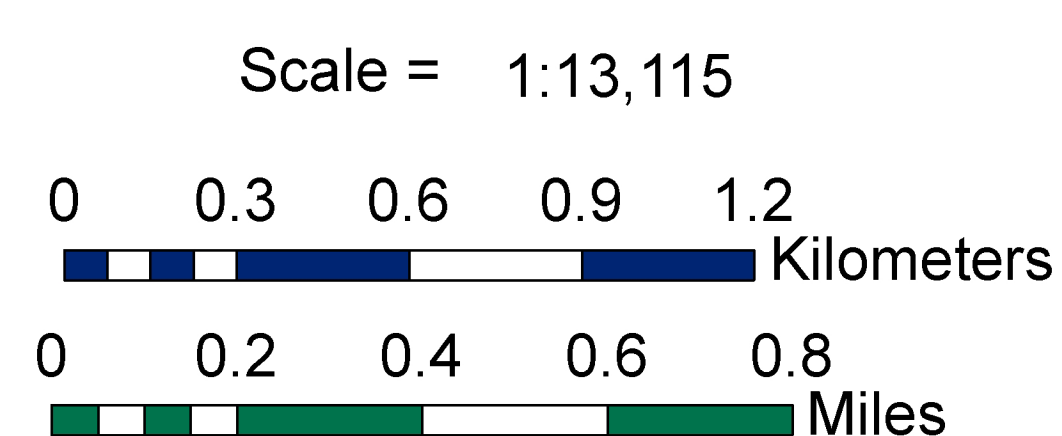
Land-Water Classified CIR Aerial Photography 2000



Land-Water Classified CIR Digital Camera Imagery 2004

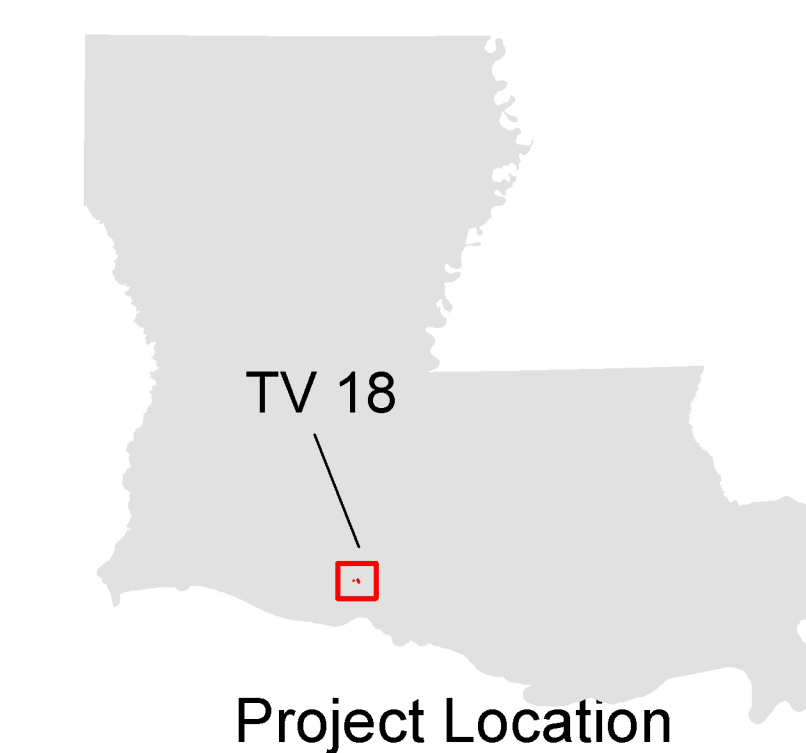


Prepared By:
U.S. Geological Survey
National Wetlands Research Center
Lafayette, LA



Project Boundary

Description of Classes:
Coastal land/water classification is variable based on water level. Land is described as vegetated areas and newly created terraces above the water line at time of flight. Water is described as areas that could be classified as lake bottom are included into the water classification.



Datasources:
Color Infrared (CIR) digital camera imagery was acquired by USGS equipment on July 13, 2004. GSD = 0.78m.
1:12000 scale CIR aerial photography was acquired on November 22, 2000.