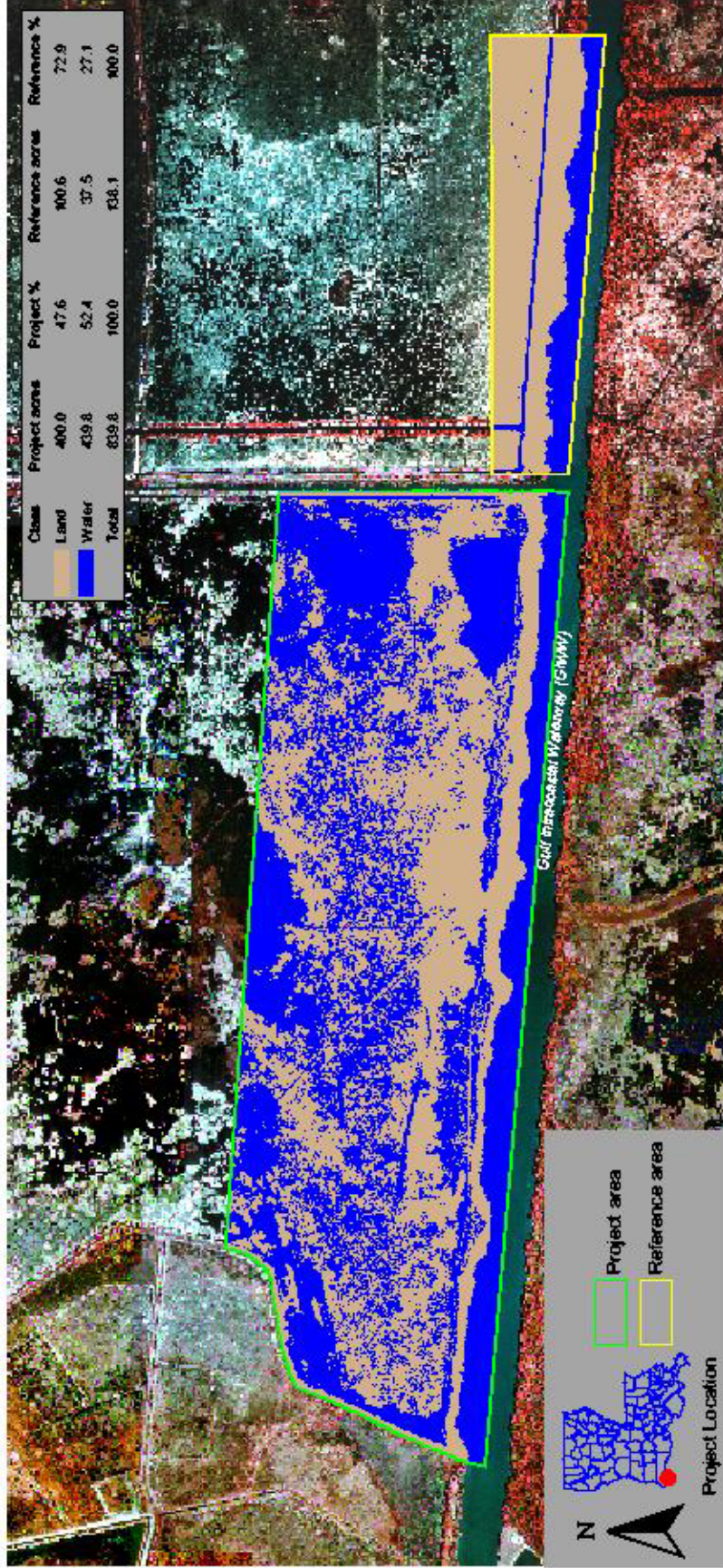




Cameron Prairie National Wildlife Refuge Shoreline Protection (ME-09) Coastal Wetlands Planning, Protection and Restoration Act

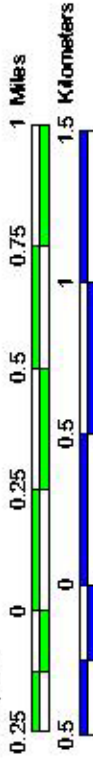


1993 Land-Water Analysis



Prepared by:
 U.S. Department of the Interior
 U.S. Geological Survey
 National Wetlands Research Center
 Lafayette, Louisiana
 and
 Louisiana Department of Natural Resources
 Coastal Restoration Division
 Abbeville Field Office

Land-water data were obtained from 1:12,000 scale color-infrared aerial photography on November 1, 1993, before construction of a rock breakwater separating the Gulf Intracoastal Waterway from Cameron Prairie Wildlife Refuge. Data are shown here at 1:20,000.



Federal Sponsor:
 U.S. Fish and Wildlife Service



Map ID: USGS-NWRC 2003-02-038