



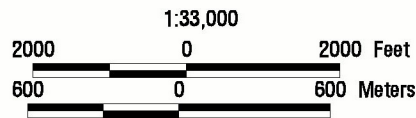
West Hackberry Plantings & Sediment Enhancement (CS-19)

Coastal Wetlands Planning, Protection and Restoration Act

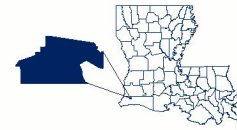
1997 Photomosaic



Prepared by:
 U.S. Department of the Interior
 U.S. Geological Survey
 National Wetlands Research Center
 Lafayette, LA
 and
 Louisiana Department of Natural Resources
 Coastal Restoration Division
 Abbeville Field Office



Source:
 The 1:12,000 scale color infrared
 aerial photography was obtained
 on November 23, 1997.



Federal Sponsor:
 U.S. Department of Agriculture
 Natural Resources Conservation Service


Map ID: 00-02-049