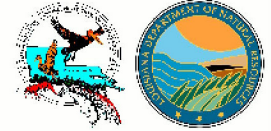




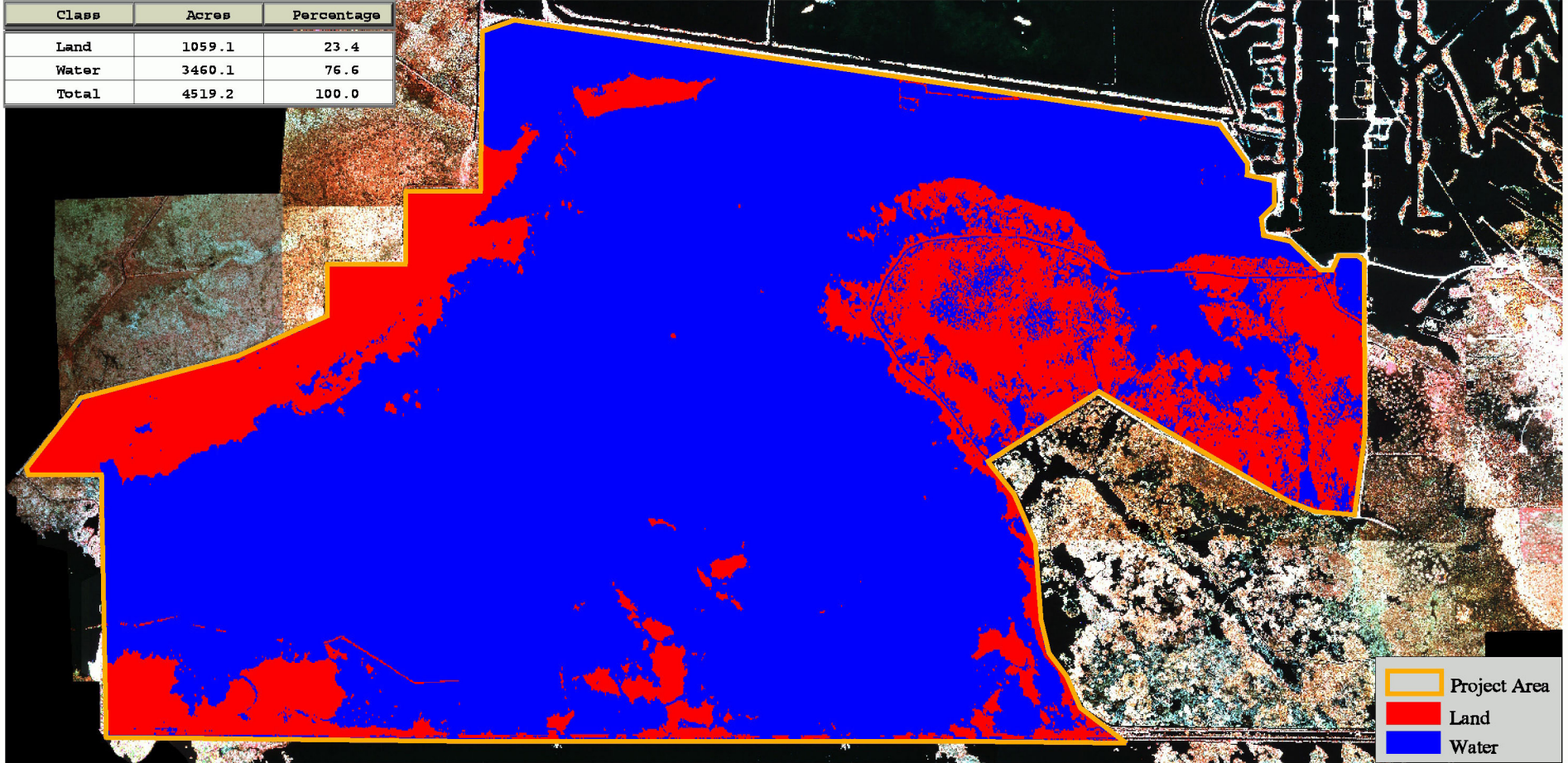
West Hackberry Plantings & Sediment Enhancement (CS-19)


Coastal Wetlands Planning, Protection and Restoration Act

1997 GIS Land-Water Analysis

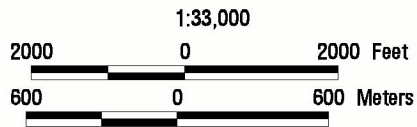


Class	Acres	Percentage
Land	1059.1	23.4
Water	3460.1	76.6
Total	4519.2	100.0

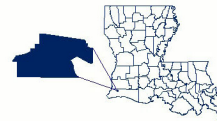


-  Project Area
-  Land
-  Water

Prepared by:
 U.S. Department of the Interior
 U.S. Geological Survey
 National Wetlands Research Center
 Lafayette, LA
 and
 Louisiana Department of Natural Resources
 Coastal Restoration Division
 Abbeville Field Office



Source:
 The 1:12,000 scale color infrared
 aerial photography was obtained
 on November 23, 1997.



Federal Sponsor:
 U.S. Department of Agriculture
 Natural Resources Conservation Service

