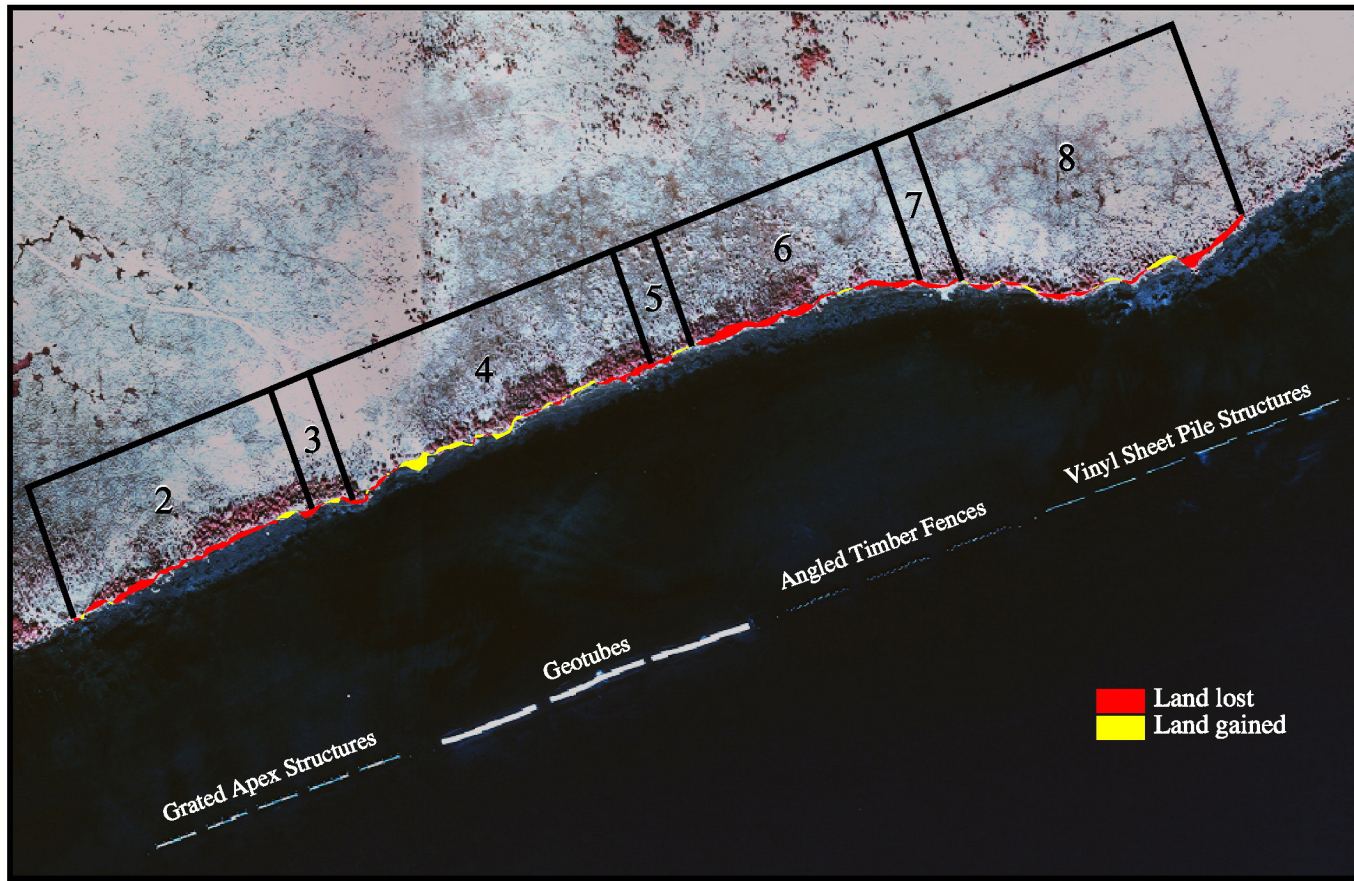
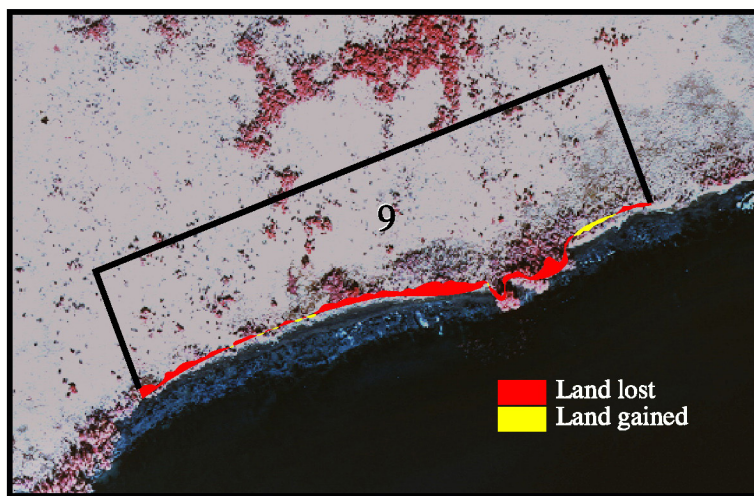


BA-15 (Lake Salvador Shoreline Protection) Phase I

Shoreline Change: November 1997 - August 1998



BA-15 Phase I Project Area



BA-15 Phase I Reference Area



Color-infrared aerial
photography taken
December 18, 1997 at
1:12,000 scale. Shown
here at 1:5,500 scale.

200 0 200 400 600 800 Feet

100 0 100 200 Meters