



Chandeleur Islands Marsh Restoration (PO-27)

Renee Site

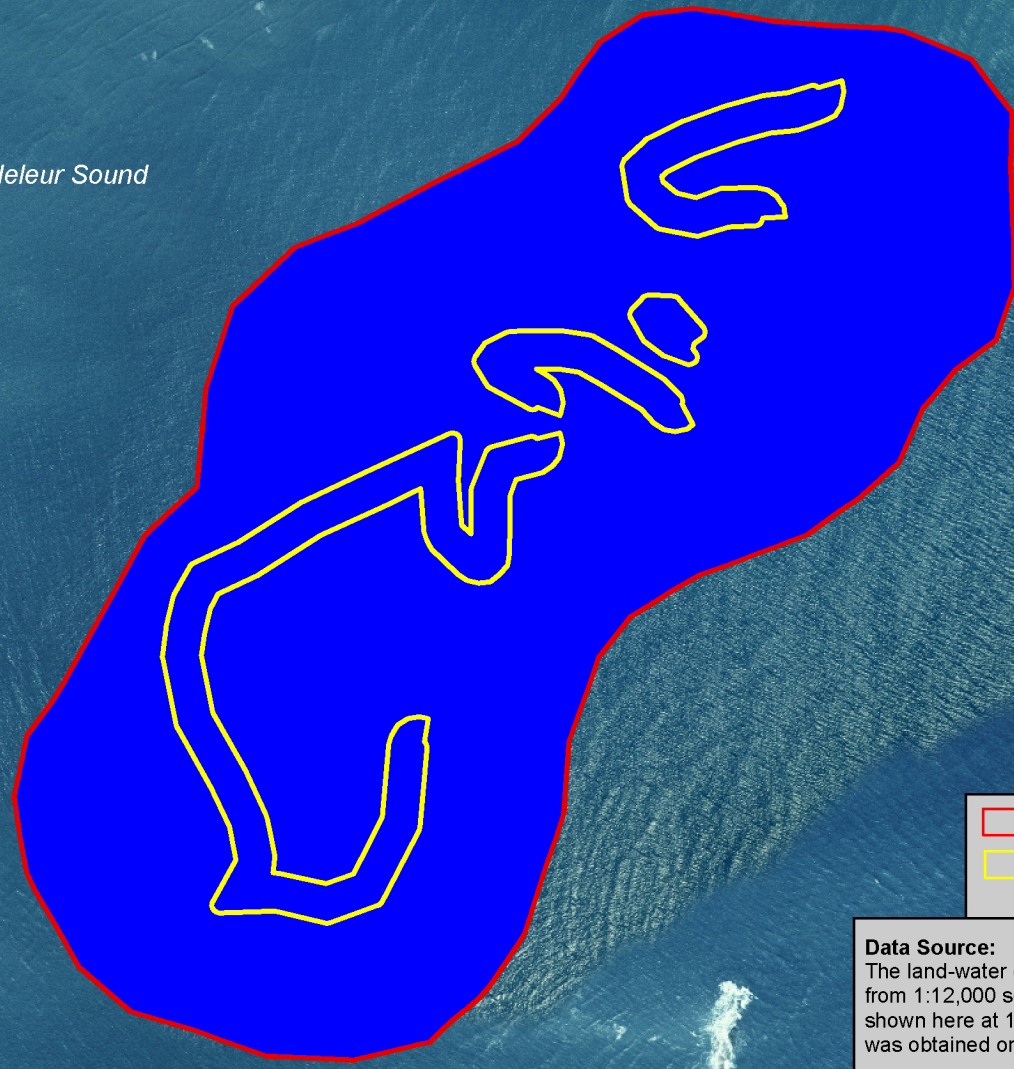
Coastal Wetlands Planning, Protection and Restoration Act

2005 Land-Water Analysis



Class	Site Acres
Water	91.0
Irregularly Exposed	0.0
Regularly Flooded	0.0
Irregularly Flooded	0.0
Land	0.0
Total	91.0

Chandeleur Sound



Study Area

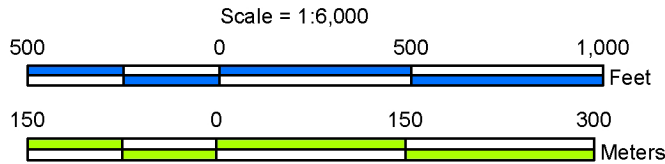
Vegetative Planting Boundary

Project Information:
 Marsh restoration strategies at the Chandeleur Islands Marsh Restoration (PO-27) project area included vegetative plantings of smooth cordgrass (*Spartina alterniflora*) at 10 overwash fan sites. The Renee study area is one of these sites.

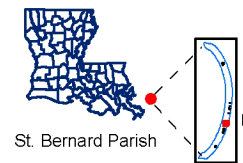
All areas characterized by emergent vegetation, wetland forest, or scrub-shrub were classified as land, while open water, unvegetated mudflats, and aquatic beds were classified as water. In addition, tidal water regime modifiers based on time and duration of flooding were included. Irregularly flooded areas were classified as tidal water that floods land surface less often than daily. Irregularly exposed areas were classified as land surface that is exposed by tides less often than daily. Regularly flooded areas were classified as tidal water that alternately floods and exposes the land surface at least once daily. Due to tidal fluctuation, water classes are based on water levels at the time of flight. The water regime classification is modified from "Classification of wetlands and deepwater habitats of the United States" (Cowardin and others, 1979).

Data Source:
 The land-water data were derived from 1:12,000 scale, color infrared photography, shown here at 1:6,000 scale. The photography was obtained on November 2, 2005.

Prepared by:
 U.S. Department of the Interior
 U.S. Geological Survey
 National Wetlands Research Center
 Lafayette, Louisiana
 and
 Louisiana Department of Natural Resources
 Coastal Restoration Division
 New Orleans Field Office



Project Location



Federal Sponsor:
 National Marine Fisheries Service



Map ID: USGS-NWRC 2007-02-0090