



Chandeaur Islands Marsh Restoration (PO-27) Redfish Point Site

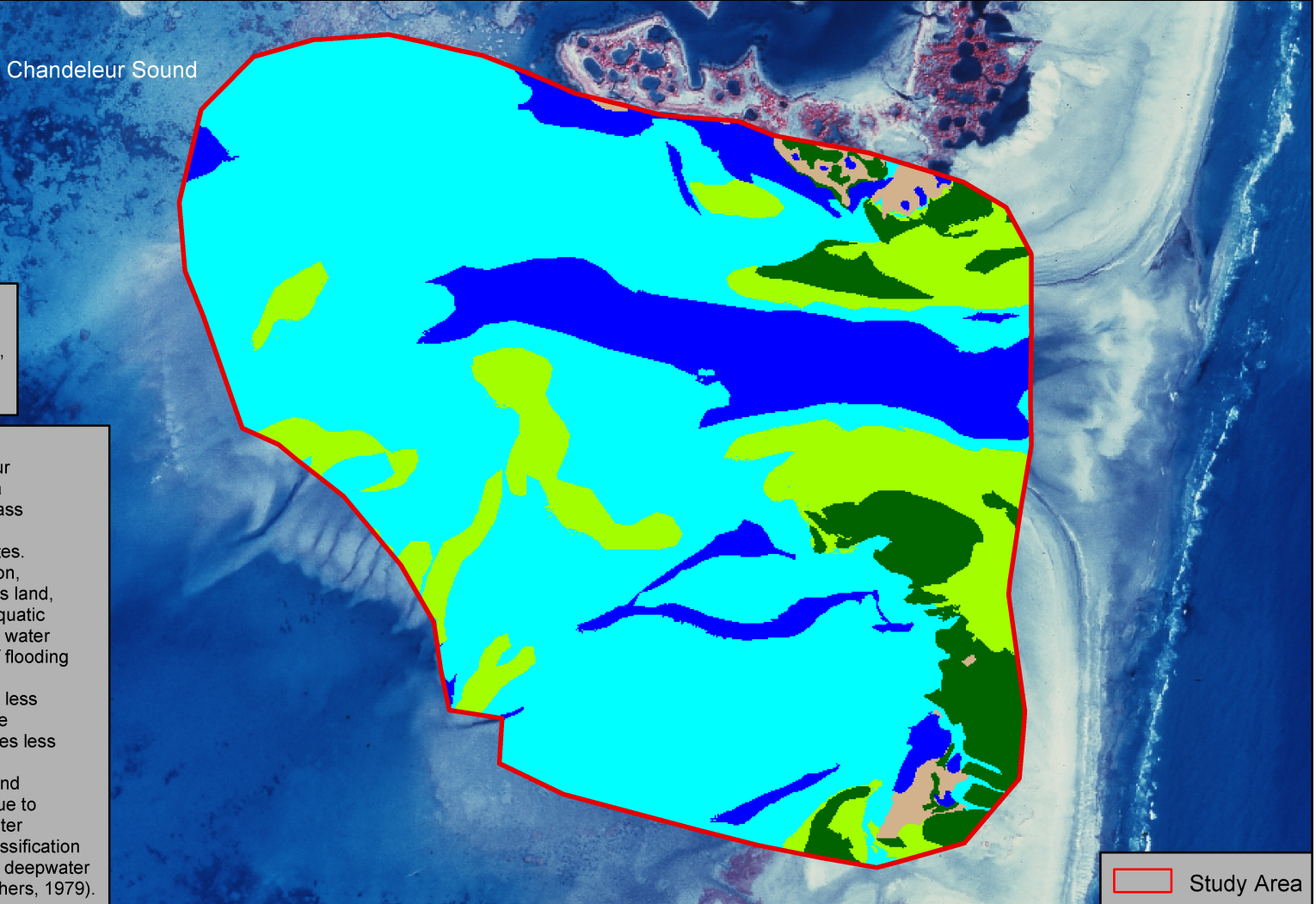
Coastal Wetlands Planning, Protection and Restoration Act 2000 Land-Water Analysis



Class	Site Acres
Water	8.6
Irregularly Exposed	37.8
Regularly Flooded	8.8
Irregularly Flooded	4.4
Land	0.9
Total	60.5

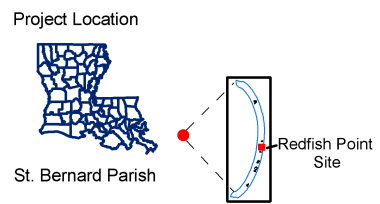
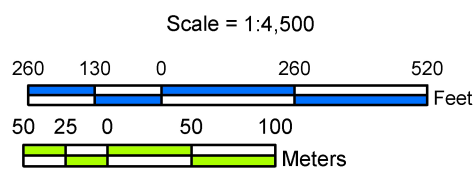
Data Source:
The land-water data were acquired from 1:12,000 scale, color infrared photography, shown here at 1:4,500 scale. The photography was obtained on November 29, 2000.

Project Information:
Marsh restoration strategies at the Chandeaur Islands Marsh Restoration (PO-27) project area included vegetative plantings of smooth cordgrass (*Spartina alterniflora*) at 10 overwash fan sites. The Redfish Point study area is one of these sites.
All areas characterized by emergent vegetation, wetland forest, or scrub-shrub were classified as land, while open water, unvegetated mudflats, and aquatic beds were classified as water. In addition, tidal water regime modifiers based on time and duration of flooding were included. Irregularly flooded areas were classified as tidal water that floods land surface less often than daily. Irregularly exposed areas were classified as land surface that is exposed by tides less often than daily. Regularly flooded areas were classified as tidal water that alternately floods and exposes the land surface at least once daily. Due to tidal fluctuation, water classes are based on water levels at the time of flight. The water regime classification is modified from "Classification of wetlands and deepwater habitats of the United States" (Cowardin and others, 1979).



Study Area

Prepared by:
U.S. Department of the Interior
U.S. Geological Survey
National Wetlands Research Center
Lafayette, Louisiana
and
Louisiana Department of Natural Resources
Coastal Restoration Division
New Orleans Field Office



Federal Sponsor:
National Marine Fisheries Service



Map ID: USGS-NWRC 2005-02-0032