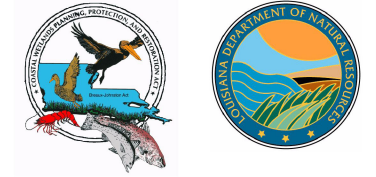
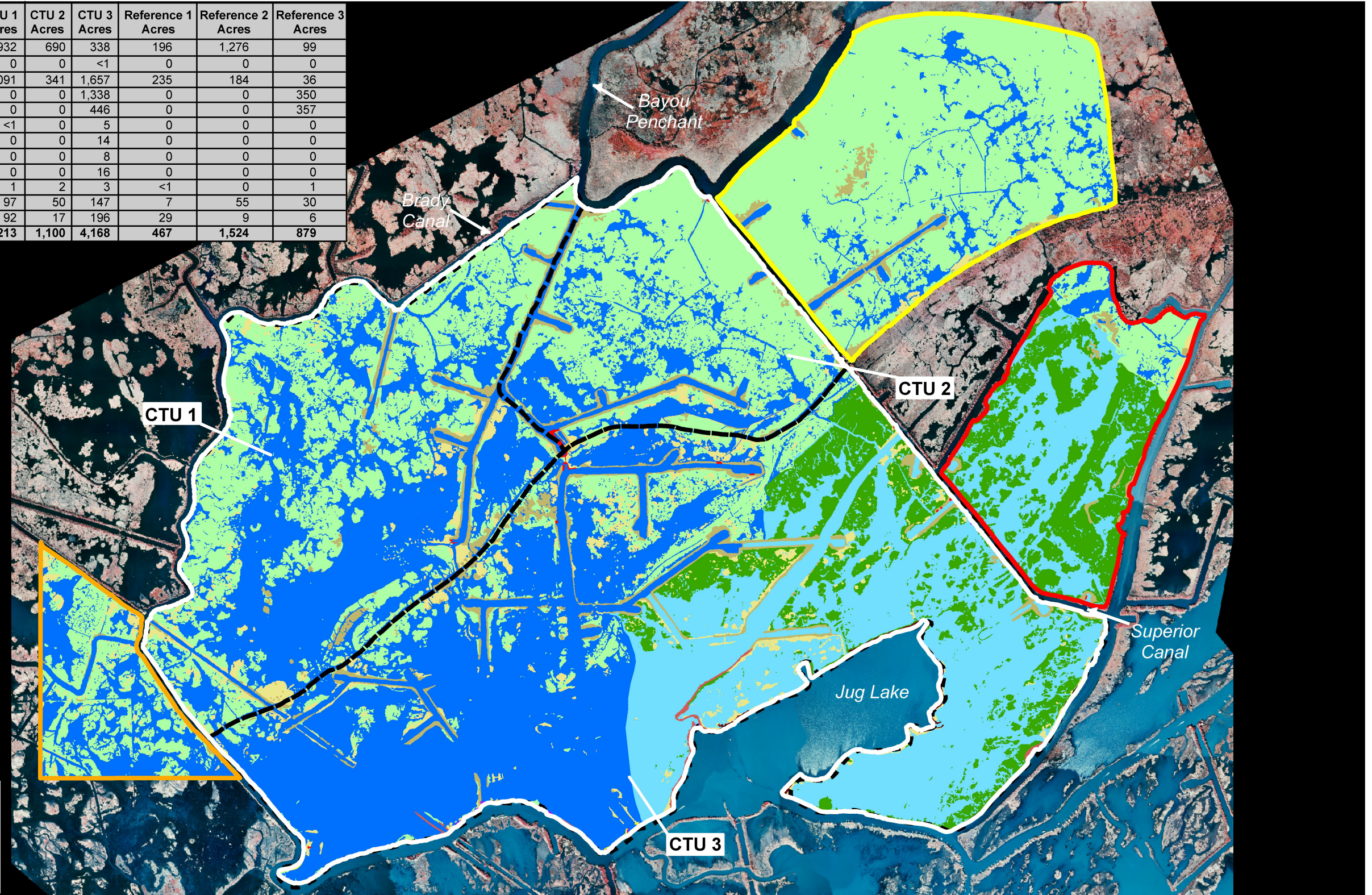


Brady Canal Hydrologic Restoration (TE-28)

Coastal Wetlands Planning, Protection and Restoration Act
2002 Habitat Analysis



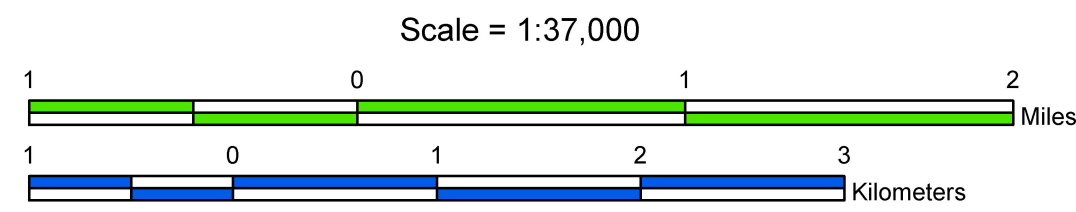
Habitat Class	Project Acres	CTU 1 Acres	CTU 2 Acres	CTU 3 Acres	Reference 1 Acres	Reference 2 Acres	Reference 3 Acres
Fresh Marsh	1,960	932	690	338	196	1,276	99
Mudflat	<1	0	0	<1	0	0	0
Open Water - Fresh	3,089	1,091	341	1,657	235	184	36
Open Water - Intermediate	1,338	0	0	1,338	0	0	350
Intermediate Marsh	446	0	0	446	0	0	357
Upland Barren	5	<1	0	5	0	0	0
Upland Forested	14	0	0	14	0	0	0
Upland Range	8	0	0	8	0	0	0
Upland Scrub-Shrub	16	0	0	16	0	0	0
Upland Urban	6	1	2	3	<1	0	1
Wetland Forested	294	97	50	147	7	55	30
Wetland Scrub-Shrub	305	92	17	196	29	9	6
Total	7,481	2,213	1,100	4,168	467	1,524	879



Project Area
 Reference Area 1
 Reference Area 2
 Reference Area 3
 Conservation Treatment Unit (CTU) Boundary

Data Source:
Habitat data were derived from 1:12,000 scale, color infrared photography obtained December 15, 2002. Habitat classes are modified from "Classification of wetlands and deepwater habitats of the United States" (Cowardin and others, 1979). The data were overlaid on a 2002 photomosaic image.

Prepared by:
U.S. Department of the Interior
U.S. Geological Survey
National Wetlands Research Center
Lafayette, Louisiana
and
Louisiana Department of Natural Resources
Coastal Restoration Division
Thibodaux Field Office



Federal Sponsor:
U.S. Department of Agriculture
Natural Resources Conservation Service