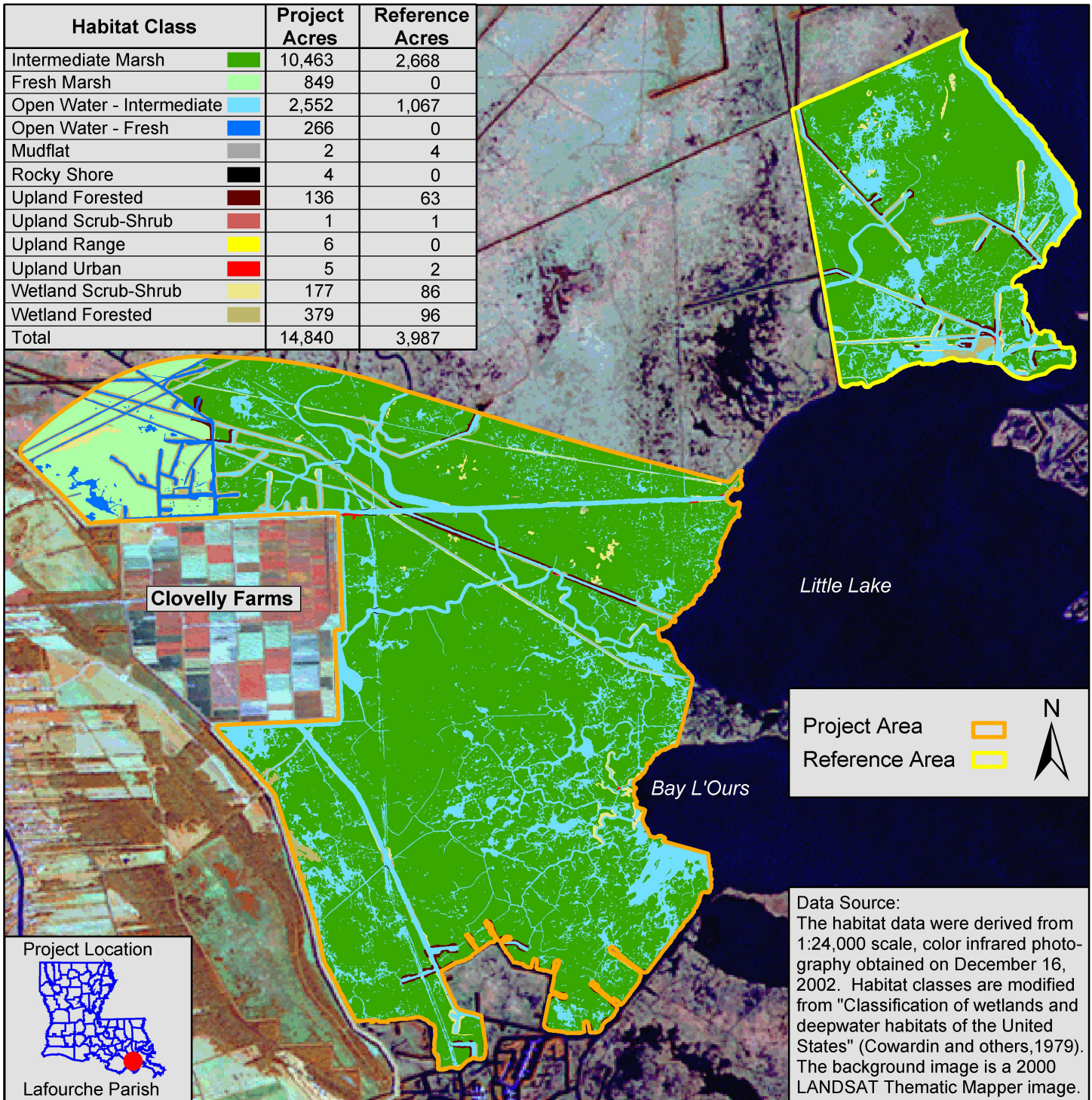




GIWW (Gulf Intracoastal Waterway) to Clovelly Hydrologic Restoration (BA-02) Coastal Wetlands Planning, Protection and Restoration Act 2002 Habitat Analysis

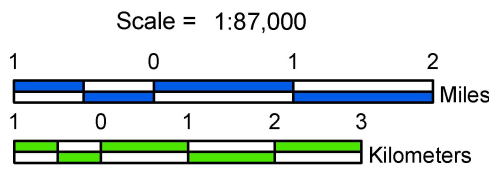


Habitat Class	Project Acres	Reference Acres
Intermediate Marsh	10,463	2,668
Fresh Marsh	849	0
Open Water - Intermediate	2,552	1,067
Open Water - Fresh	266	0
Mudflat	2	4
Rocky Shore	4	0
Upland Forested	136	63
Upland Scrub-Shrub	1	1
Upland Range	6	0
Upland Urban	5	2
Wetland Scrub-Shrub	177	86
Wetland Forested	379	96
Total	14,840	3,987



Data Source:
The habitat data were derived from 1:24,000 scale, color infrared photography obtained on December 16, 2002. Habitat classes are modified from "Classification of wetlands and deepwater habitats of the United States" (Cowardin and others, 1979). The background image is a 2000 LANDSAT Thematic Mapper image.

Prepared by:
U.S. Department of the Interior
U.S. Geological Survey
National Wetlands Research Center
Lafayette, Louisiana
and
Louisiana Department of Natural Resources
Coastal Restoration Division
Thibodaux Field Office



Federal Sponsor:
U.S. Department of Agriculture
Natural Resources Conservation Service