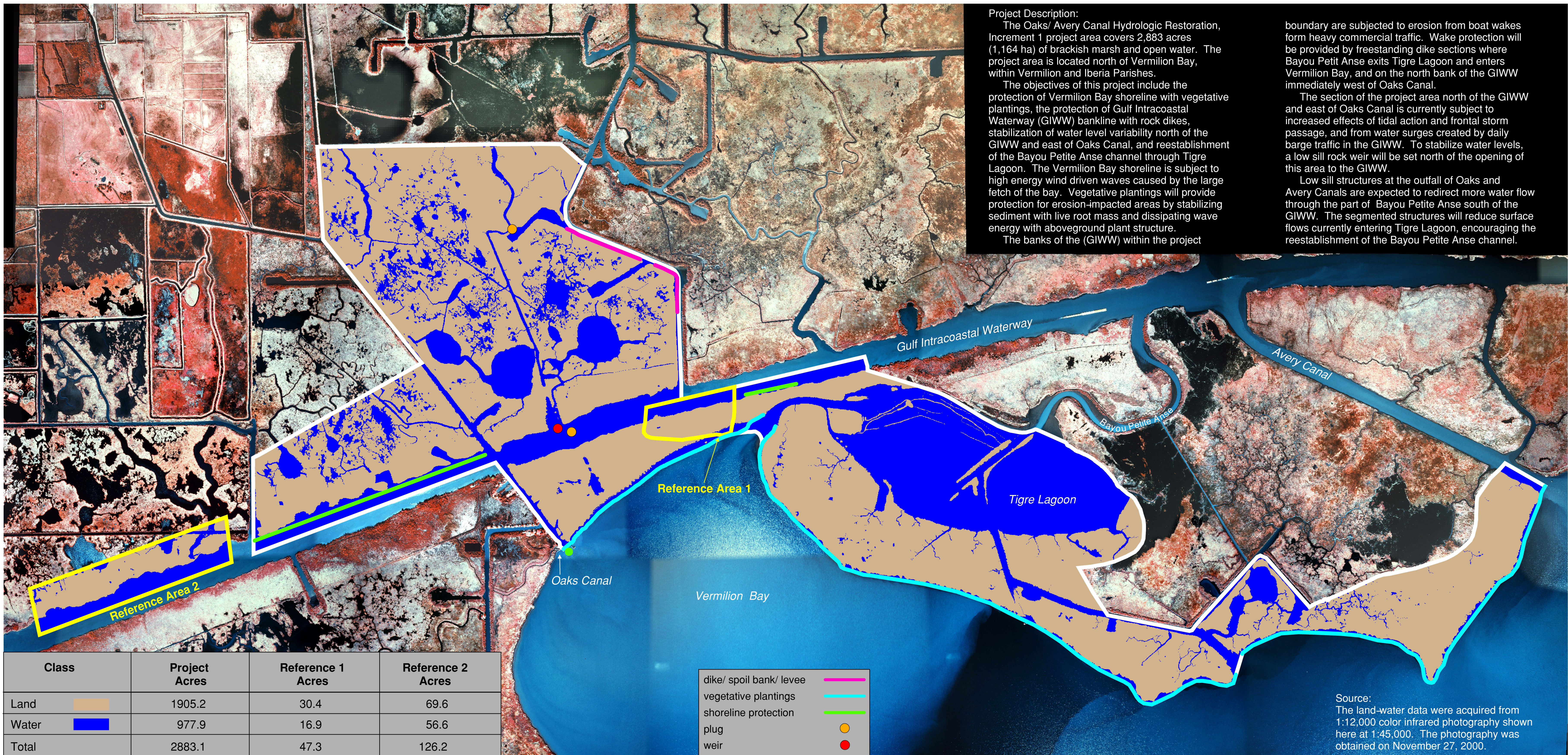
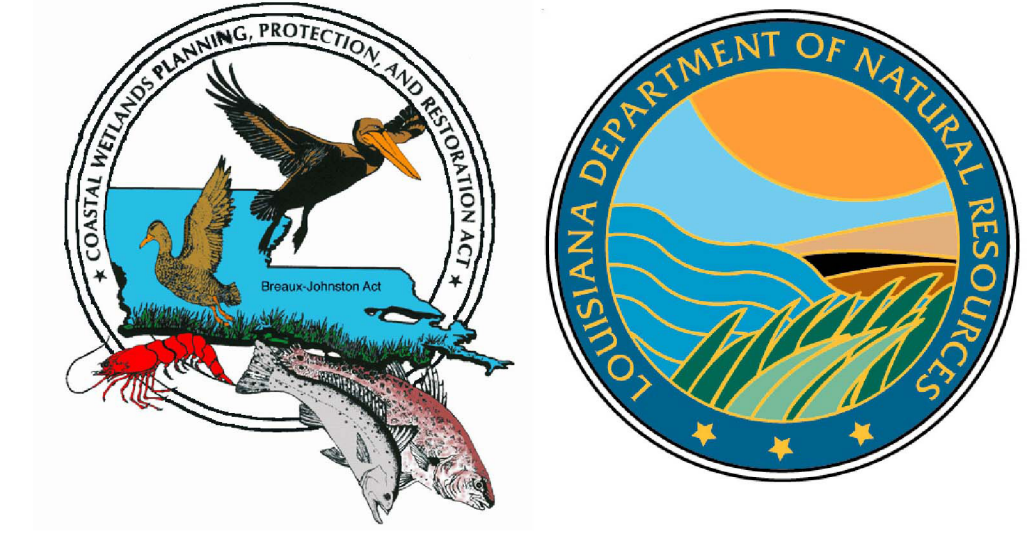




Oaks/Avery Canal Hydrologic Restoration, Increment 1 (TV-13a)

Coastal Wetlands Planning, Protection and Restoration Act

2000 Land-Water Analysis



Project Description:
 The Oaks/ Avery Canal Hydrologic Restoration, Increment 1 project area covers 2,883 acres (1,164 ha) of brackish marsh and open water. The project area is located north of Vermilion Bay, within Vermilion and Iberia Parishes.

The objectives of this project include the protection of Vermilion Bay shoreline with vegetative plantings, the protection of Gulf Intracoastal Waterway (GIWW) bankline with rock dikes, stabilization of water level variability north of the GIWW and east of Oaks Canal, and reestablishment of the Bayou Petite Anse channel through Tigre Lagoon. The Vermilion Bay shoreline is subject to high energy wind driven waves caused by the large fetch of the bay. Vegetative plantings will provide protection for erosion-impacted areas by stabilizing sediment with live root mass and dissipating wave energy with aboveground plant structure.

The banks of the (GIWW) within the project boundary are subjected to erosion from boat wakes from heavy commercial traffic. Wake protection will be provided by freestanding dike sections where Bayou Petite Anse exits Tigre Lagoon and enters Vermilion Bay, and on the north bank of the GIWW immediately west of Oaks Canal.

The section of the project area north of the GIWW and east of Oaks Canal is currently subject to increased effects of tidal action and frontal storm passage, and from water surges created by daily barge traffic in the GIWW. To stabilize water levels, a low sill rock weir will be set north of the opening of this area to the GIWW.

Low sill structures at the outfall of Oaks and Avery Canals are expected to redirect more water flow through the part of Bayou Petite Anse south of the GIWW. The segmented structures will reduce surface flows currently entering Tigre Lagoon, encouraging the reestablishment of the Bayou Petite Anse channel.

Class	Project Acres	Reference 1 Acres	Reference 2 Acres
Land	1905.2	30.4	69.6
Water	977.9	16.9	56.6
Total	2883.1	47.3	126.2

- dike/ spoil bank/ levee
- vegetative plantings
- shoreline protection
- plug
- weir

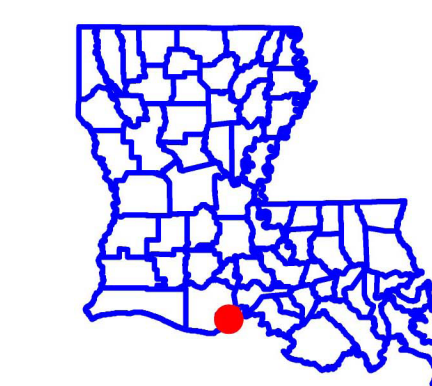
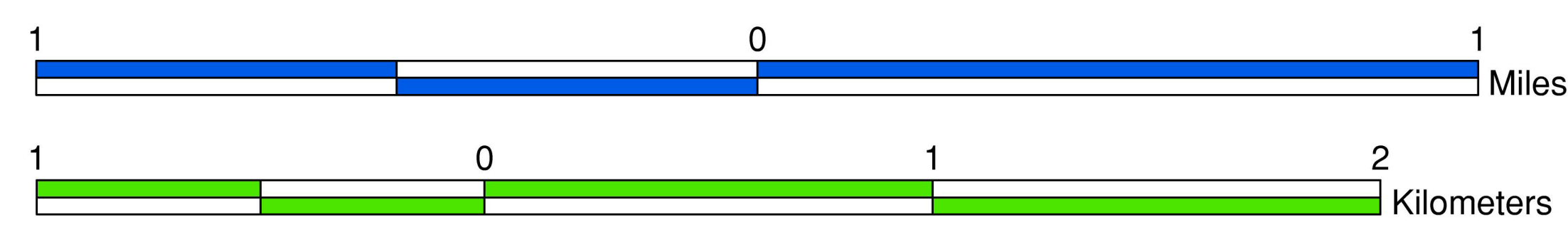
Source:
 The land-water data were acquired from 1:12,000 color infrared photography shown here at 1:45,000. The photography was obtained on November 27, 2000.

Prepared by:
 U.S. Department of the Interior
 U.S. Geological Survey
 National Wetlands Research Center
 Lafayette, Louisiana
 and
 Louisiana Department of Natural Resources
 Coastal Restoration Division
 Lafayette Field Office

N

- Project Area
- Reference Areas

Scale = 1:12,000



Project Location

Federal Sponsor:
 U.S. Department of Agriculture
 Natural Resources Conservation Service



Map ID: USGS-NWRC 2004-02-0031