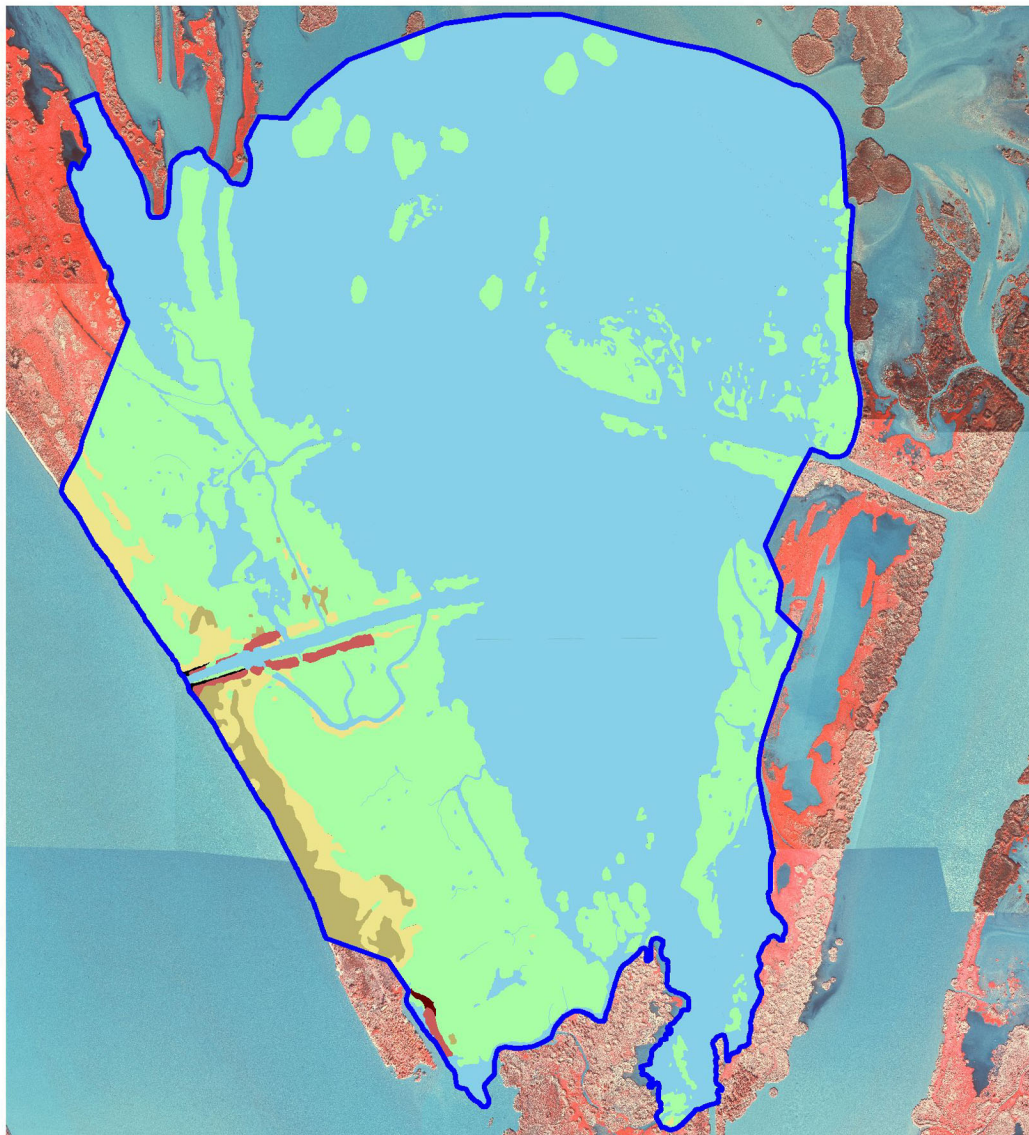


Channel Armor Gap Crevasse (MR-06)

Coastal Wetlands Planning, Protection and Restoration Act

2001 Habitat Analyses



Class	Acres
Marsh - Fresh	455.1
Open Water - Fresh	1039.4
Wetland Forested	23.7
Wetland Scrub/Shrub - Fresh	37.9
Upland Scrub/Shrub	6.2
Jetty	3.0
Upland Forested	0.5
Total	1565.8

Habitat Classes

- Marsh - Fresh
- Open Water - Fresh
- Wetland Forested
- Wetland Scrub/Shrub - Fresh
- Upland Scrub/Shrub
- Jetty
- Upland Forested

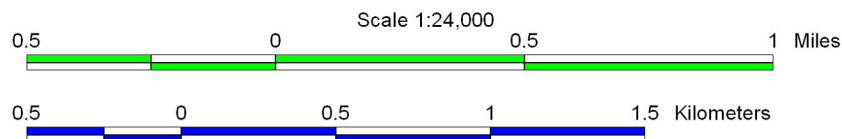


Project Boundary

Source:

The habitat data were derived from 1:12,000 scale color-infrared photography shown here at 1:24,000 scale. Preconstruction color-infrared photography was obtained on December 19, 2001. Habitat classes are based on "Classification of Wetlands and Deepwater Habitats of the United States" (Cowardin and others, 1979, FWS/OBS - 79/31) as modified for the National Wetlands Inventory mapping conventions.

Prepared by:
U.S. Department of the Interior
U.S. Geological Survey
National Wetlands Research Center
Lafayette, LA
and
Louisiana Department of Natural Resources
Coastal Restoration Division
New Orleans Field Office



Federal Sponsor:

