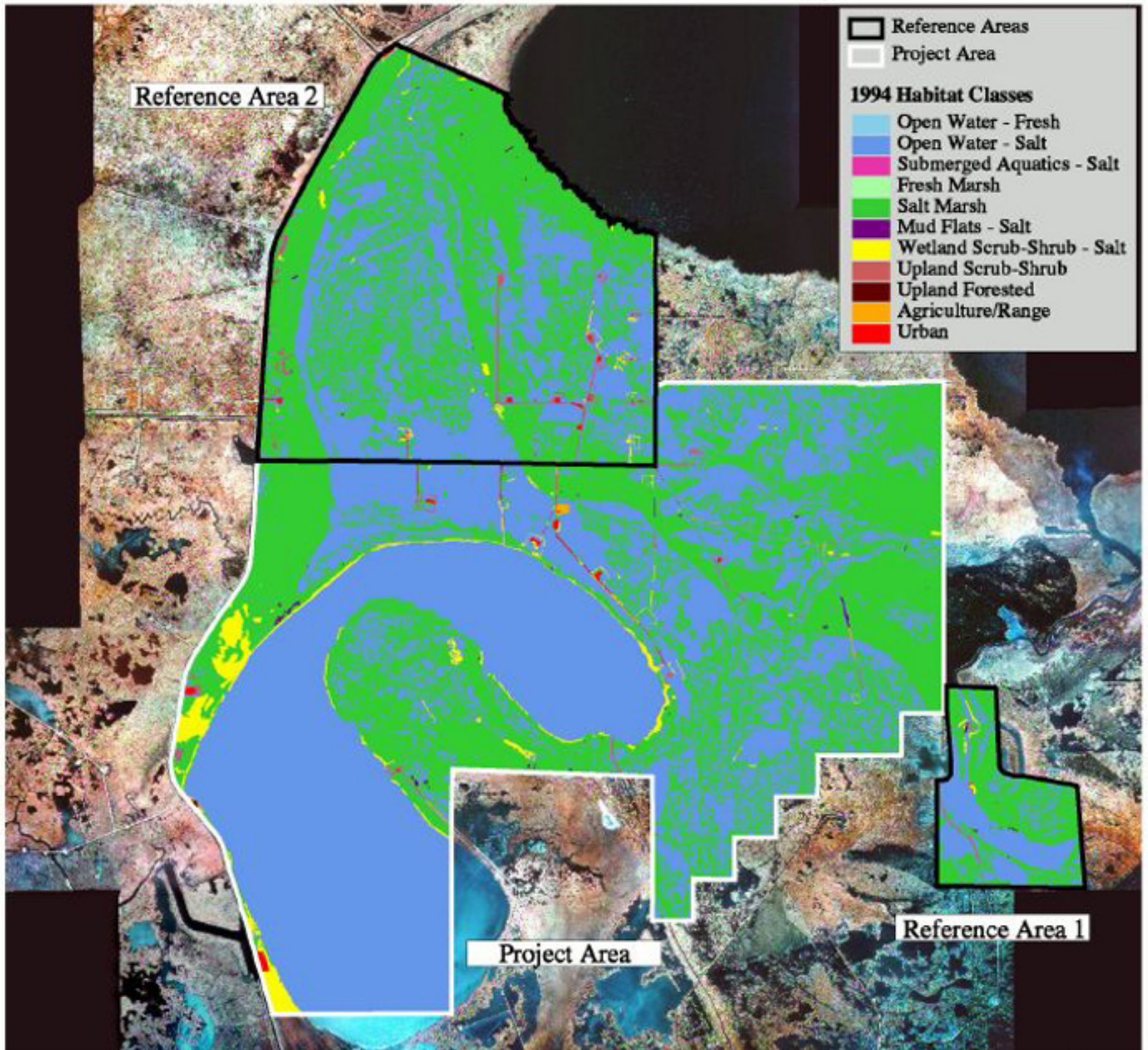


# Coastal Wetlands Planning, Protection and Restoration Act Project CS-20: East Mud Lake 1994 Habitat Analysis



Habitat data were derived from 1:12,000 scale color-infrared photography. Preconstruction photography was obtained December 26, 1994 shown here at 1:60,000 scale. Classes are based on Cowardin et al. 1979, as modified for the National Wetlands Inventory Mapping Conventions.

Federal Sponsor:  
U.S. Department of Agriculture  
Natural Resource Conservation Service



Prepared by:  
U.S. Department of the Interior  
U.S. Geological Survey  
National Wetlands Research Center  
Lafayette, Louisiana  
and  
Louisiana Department of Natural Resources  
Coastal Restoration Division  
Abbeville, Louisiana

