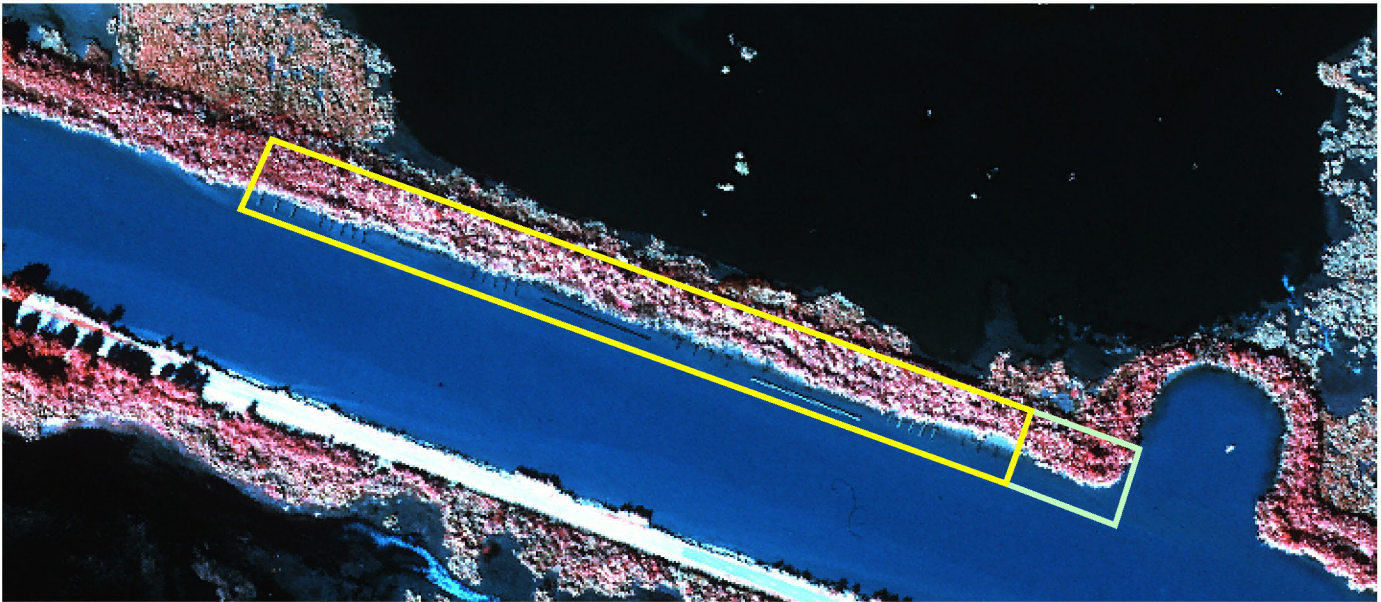
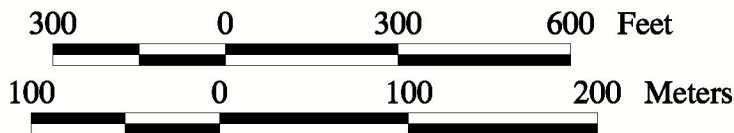


1:12,000 scale color-infrared aerial photography taken November 21, 1993 and shown here at 1:4,000 scale.



1:12,000 scale color-infrared aerial photography taken November 8, 1997 and shown here at 1:4,000 scale.



U.S. Department of the Interior
 U.S. Geological Survey
 National Wetlands Research Center
 Lafayette, Louisiana

and
 Louisiana Department of Natural Resources
 Coastal Restoration Division
 Thibodaux, Louisiana

 Project Area Boundary
 Reference Area Boundary



Federal Sponsor:
 U.S. Department of Agriculture
 Natural Resources Conservation Service